

RESOLUTION NO. 2012-13

**A RESOLUTION BY THE BOARD OF COMMISSIONERS OF THE BAINBRIDGE ISLAND METROPOLITAN PARK & RECREATION DISTRICT, KITSAP COUNTY, WASHINGTON APPROVING A SITE PLAN FOR A PARK SLATED FOR THE FORMER UNOCAL SITE IN WINSLOW, AND SUBJECT TO SPECIFIED CONDITIONS AND COMPLETION OF THE PARK'S CONSTRUCTION.**

**WHEREAS**, the City of Bainbridge Island ("City"), and Kitsap Transit ("KT") jointly own a parcel of property located on the southwest corner of the intersection of Winslow Way East and State Route 305 ("Park Parcel"), which is currently vacant and unused, and often referred to as the Unocal park site; and

**WHEREAS**, a broad-based informal committee of interested citizens was formed, known as the Citizens Park Task Force ("Citizens Task Force"), to advocate for and oversee the development of the Park Parcel as a public park; and

**WHEREAS**, the Bainbridge Island Metropolitan Park & Recreation District (the "Park District") is willing to assume responsibility for the operation, management and maintenance of the Park Parcel once the park is complete, subject to the following conditions, and

**WHEREAS**, the Citizens Task Force (with the consent and approval of the City and KT) organized a design process for the Park Parcel that solicited broad public input and ideas regarding design, use and appearance of the proposed park, including two open public workshops at which Park District staff had a major role; and

**WHEREAS**, the Citizens Task Force is now coming back before the Park District seeking approval for the park plans that came out of the public design process, and


**WHEREAS**, while the City and KT will retain ownership of the site, Kitsap Transit has consented to the proposed park and opted to defer to the City for all matters related to the development of the park subject to an existing Interlocal Agreement between the City and KT,


**NOW THEREFORE, BE IT RESOLVED** by the Board of Commissioners of the Bainbridge Island Metropolitan Park & Recreation District, Kitsap County, Washington, that the Park District hereby approves the proposed site design concept for the Park Parcel, according to the site plan attached hereto ("Exhibit A"); provided the following conditions are met:

1. No Park District funds shall be expended for the design, permitting or construction of the Park Parcel; all funds shall be raised by the Citizens Task Force from private donations; and
2. Before any permit applications are filed for the Park Parcel, the Citizens Task Force shall have obtained similar approval of the Design Concept from the Bainbridge Is. City Council; and
3. Before ground-breaking for the project, the City and the Park District shall have approved and executed one or more Interlocal Agreements that set out the detailed terms for the Park District's assumption of permanent responsibility for all management, operation and maintenance of the park following its completion, including indemnification of any on-going or future liability related to risks associated with the site's designation as a hazardous waste clean-up site;

**PASSED** by the Board of Commissioners of the Bainbridge Island Metropolitan Park & Recreation District, Kitsap County, Washington, at a regular meeting thereof held this 17th day of May, 2012, the undersigned commissioners being present.

**BAINBRIDGE ISLAND METROPOLITAN PARK & RECREATION DISTRICT**

BY:   
Kenneth R. DeWitt

BY:   
John Thomas Swolgaard

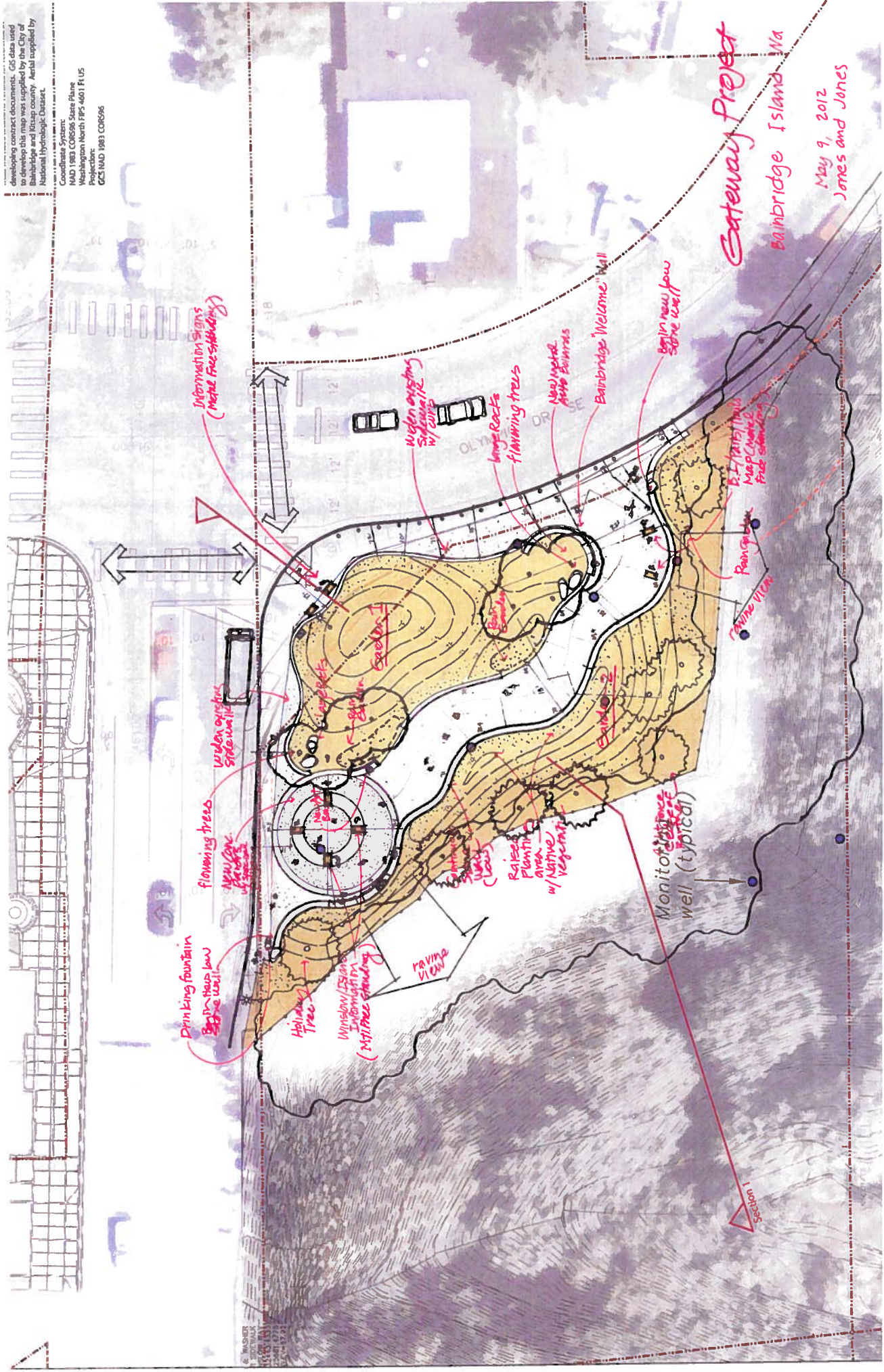
BY:   
Jay C. Kinney

BY:   
Kirk B. Robinson

ATTEST:   
Lee Cross - Secretary

# EXHIBIT A

developing contract documents. GIS data used to develop this map was supplied by the City of Bainbridge and Itaska county. Aerial supplied by National Hydrologic Dataset.  
 Coordinate System: State Plane  
 Washington North FIPS 4601 F1 US  
 Projection:  
 GCS NAD 1983 COR656



Gateway Project  
 Bainbridge Island, WA  
 May 9, 2012  
 Jones and Jones