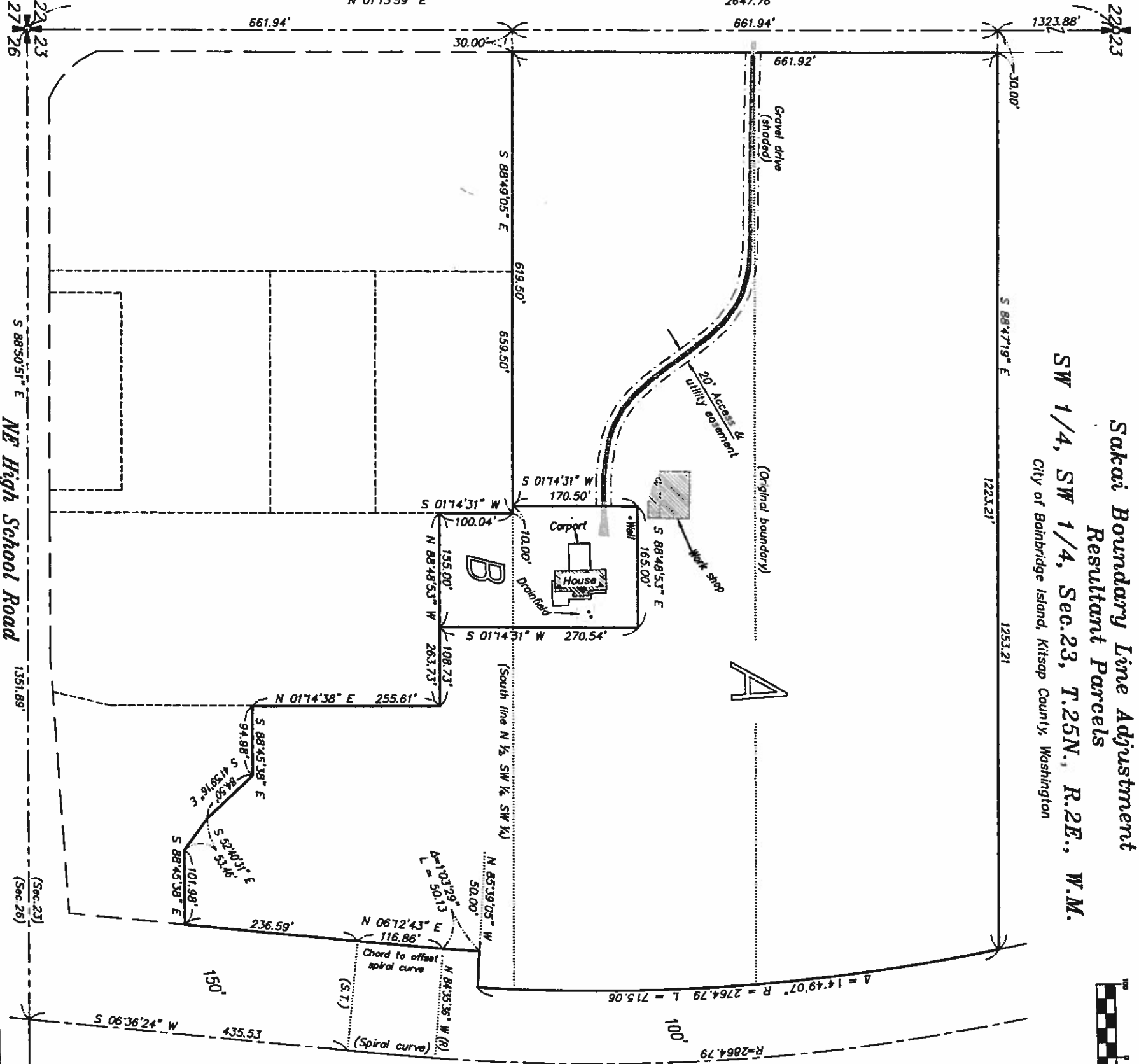


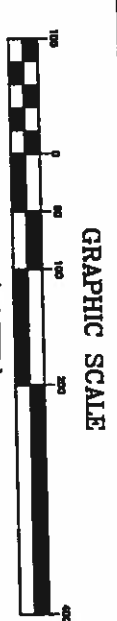
Scale: 1" = 100'
Assumed



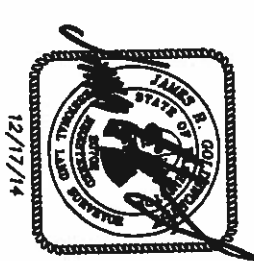
Madison Avenue NE



Sakai Boundary Line Adjustment
Resultant Parcels
SW 1/4, SW 1/4, Sec. 23, T.25N., R.2E., W.M.
City of Bainbridge Island, Kitsap County, Washington



S.R. 305



ADAM
&
GOLDSWORTHY, INC.
LAND SURVEYING

1015 NE HOSTMARK ST. (360)779-4299
POULSBORO, WA 98370 (206)842-9598
DATE 12/17/14 FIELD BOOK 3 / 3
DRAWING 5715B1A3 SHEET