



SAKAI PARK SITE



PUBLIC MEETINGS FOR PLANNING THE SAKAI PROPERTY WERE LED BY FACILITATOR BOB LINZ AND HELD:

January 23, 2016
April 23, 2016
July 16, 2016

PRESENTATIONS TO THE BOARD

August 27, 2015
January 21, 2016
February 4, 2016
July 21, 2016
August 18, 2016
June 1, 2017
July 6, 2017

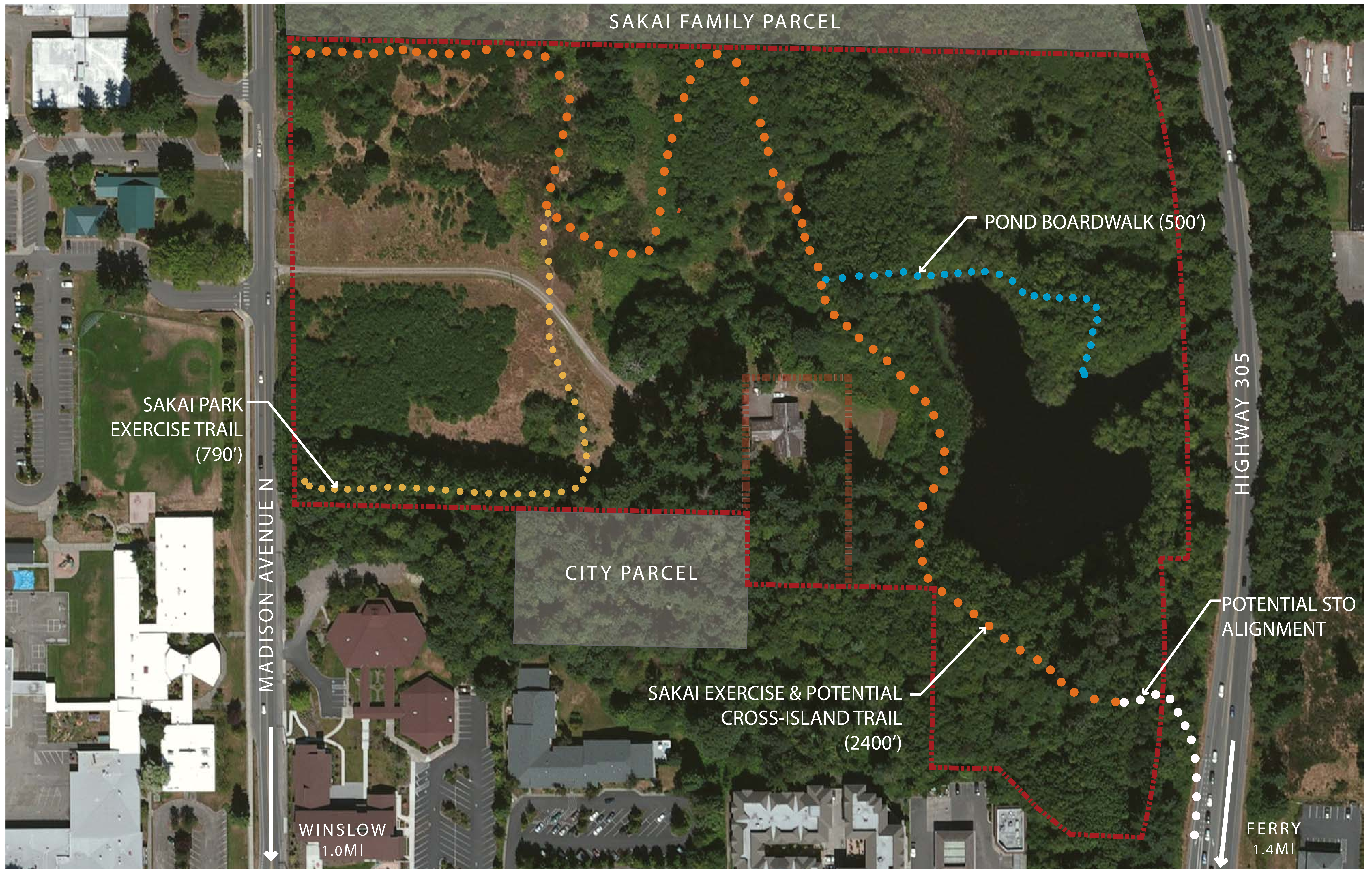
RECOMMENDED USES BASED ON ABOVE MEETINGS AS WELL AS RESEARCH FROM EIGHT STUDY GROUPS AND AN ISLAND-WIDE SURVEY, IN NO PARTICULAR ORDER:

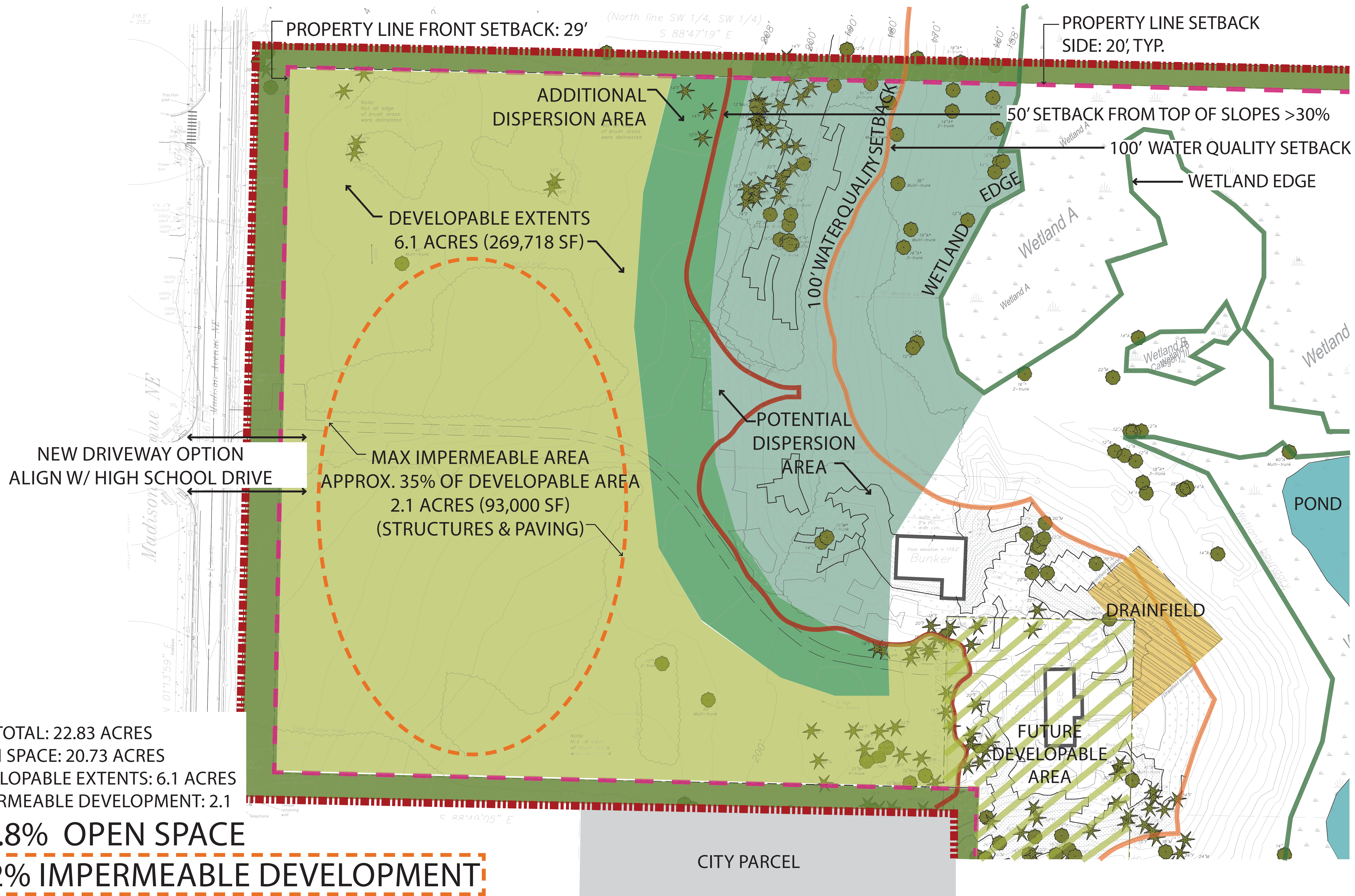
- Trails
- Picnic Shelters
- Multi-use Outdoor Complex, with lighting
- Community Recreation Center
- Multi-Use Indoor Complex
- Fifty Meter Pool
- Mountain Bike Park/Trails
- Tennis Court(s)
- Playground
- Passive Use(s)





POTENTIAL SITE TRAILS - TOTAL LENGTH 0.8 MILES (4300LF)





SLEEPING LADY,
LEAVENWORTH, WA



CEDAR RVR WATERSHED EDUCATION CENTER,
NORTH BEND, WA



MERCER SLOUGH ENVIRONMENTAL
EDUCATION CENTER, BELLEVUE, WA



OPTION 1

IMPERMEABLE AREA

TARGET 93,000 SF

BUILDINGS: 59,850 SF

PARKING: 11,340 SF

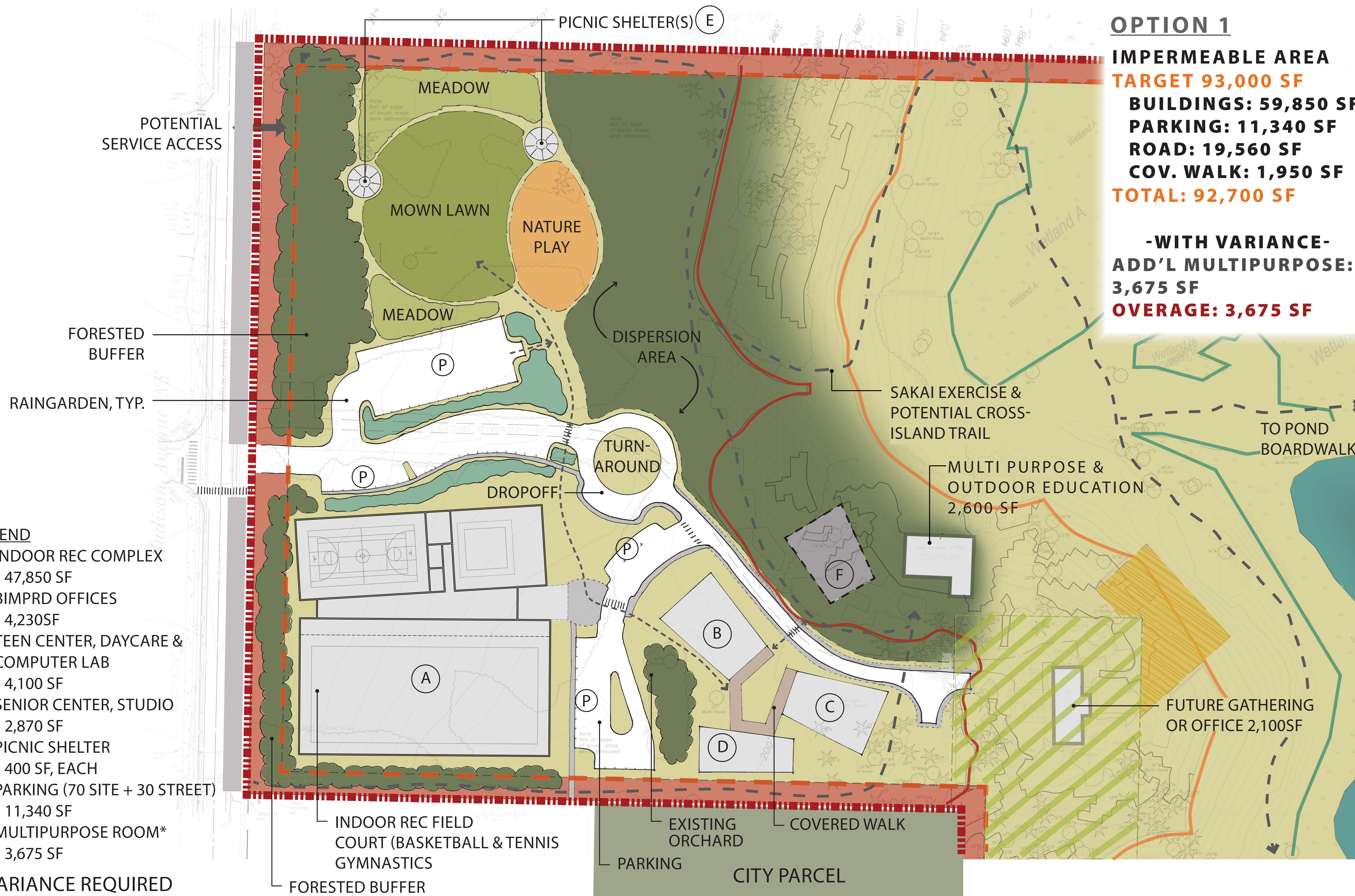
ROAD: 19,560 SF

COV. WALK: 1,950 SF

TOTAL: 92,700 SF

**-WITH VARIANCE-
ADD'L MULTIPURPOSE:
3,675 SF**

OVERAGE: 3,675 SF



LEGEND

- (A) INDOOR REC COMPLEX
47,850 SF
- (B) BIMPRD OFFICES
4,230SF
- (C) TEEN CENTER, DAYCARE &
COMPUTER LAB
4,100 SF
- (D) SENIOR CENTER, STUDIO
2,870 SF
- (E) PICNIC SHELTER
400 SF, EACH
- (P) PARKING (70 SITE + 30 STREET)
11,340 SF
- (F) MULTIPURPOSE ROOM*
3,675 SF

* VARIANCE REQUIRED



OPTION 2

IMPERMEABLE AREA

TARGET 93,000 SF

BUILDINGS: 59,850 SF

PARKING: 11,340 SF

ROAD: 20,160 SF

COV. WALK: 1,650 SF

TOTAL: 93,000 SF

-WITH VARIANCE-

COURT: 7,200 SF

ADD'L MULTIPURPOSE:

3,675 SF

OVERAGE: 10,875 SF

LEGEND

- (A) INDOOR REC COMPLEX
47,850 SF
- (B) BIMPRD OFFICES
4,230 SF
- (C) TEEN CENTER, DAYCARE &
COMPUTER LAB
4,100 SF
- (D) SENIOR CENTER, STUDIO
2,870 SF
- (E) PICNIC SHELTER
400 SF, EACH
- (P) PARKING (70 SITE + 30 STREET)
11,340 SF
- (F) MULTIPURPOSE ROOM*
3,675 SF
- (G) OUTDOOR COURT*
7,200 SF

* VARIANCE REQUIRED

