

CHAPTER 5

PARK EXHIBITS

CHAPTER 5 PARK EXHIBITS

The chapter provides information about specific Park District park land and properties. The following pages include:

- Exhibits specific to each park including location, photos, description, future potential improvements and use restrictions. It should be noted that many of the parks have use restrictions related to grants, transfer agreements, or conservation easements.
- Outdoor Facilities Table & Maps: provides an overview of outdoor park features/amenities and identifies where they are located.
- Indoor Facilities Table & Maps: provides an overview of indoor park features/amenities and identifies where they are located.

Aaron Tot Lot



1385 Aaron Avenue NE

Acreage: 0.73 acres
Parking: 3-4 vehicles
Trails: none

A neighborhood park with play equipment.

Park features:

Playground, separate swing set, picnic table and benches.

Park facilities:

Playground.

Future potential improvements:

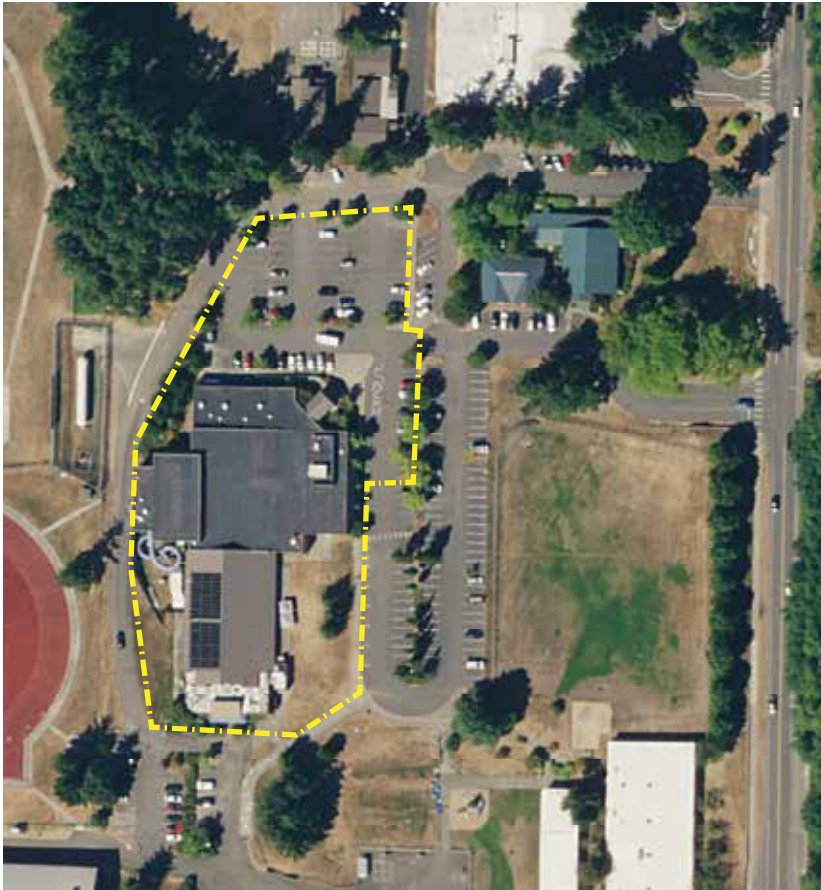
None anticipated.

Use restrictions:

Neighborhood plat dedication.



Aquatic Center



8521 Madison Avenue North

Acreage: 1.5 acres
Parking: 76 vehicles
Trails: none

A regional aquatics facility with two pools and multipurpose space on property leased from the Bainbridge Island School District.

Park features:

Ray Williamson Pool includes 25-yd, 6-lanes, and 1-meter diving board. Don Nakata Pool includes 4-lap lanes, 1 & 3-meter diving areas, 0-depth entry area, 180 ft water slide, lazy river, tot pool, steam room, 24-person spa, and dry sauna. Other features include cabana and areas for birthday parties.

Park facilities:

Overall aquatics facility of 30,000 sq ft includes restrooms, locker rooms, family dressing rooms, offices, meeting rooms, other building support areas, and 3,000 sq ft of multipurpose space with designated space for the Teen Center.

Future potential improvements:

Ray Williamson pool replacement/aquatic center improvements per proposed concept plan & feasibility study. Three pool replacement options are presented in this plan/study. None of these three options have been adopted at this time by the Park Board. For details about what has been proposed, see: <https://biparks.org/aquatic-center-planning-process/>.

Use restrictions:

Long term lease with School District.



Battle Point Park/Fairy Dell

11299 Arrow Point Drive

Acreage: 89.86 acres
Parking: 300 vehicles
Trails: 3.4 miles

A regional multipurpose park with designated passive and active use recreation areas on the site of a former military installation/Naval radio station. Includes large open grass areas with amphitheater, and fishing and seasonal ponds.

Park features:

2 playgrounds, picnic shelter, gazebo, 2 synthetic turf soccer/lacrosse fields, 3 softball/baseball fields with soccer overlay, roller hockey court with basketball overlay, 2 tennis courts with pickleball overlay, youth gymnastics facility, ADA accessible loop & jogging trail, garden plots, horse corral and trail, pump track, 9-hole disc golf course, observatory, and trail head for Forest to Sky and Fairy Dell trails.

Fairy Dell Trail provides walking connection from Battle Point Park to Puget Sound through forested ravine. It offers limited water access and views. Trailhead parking located at north Battle Point Park. (See next page for photos).

Park facilities:

Kids Up Playground, 2 restrooms, concession shack, Transmitter Building, Ritchie Observatory, Park Services office, shop & maintenance yard.

Future potential improvements:

Restroom improvements, renovation of Kids Up playground, additional picnic shelter, 6 new pickleball courts, circulation improvements, Transmitter Building basement, garden shed, field drainage & infrastructure improvements, septic & water system upgrade.

Use restrictions:

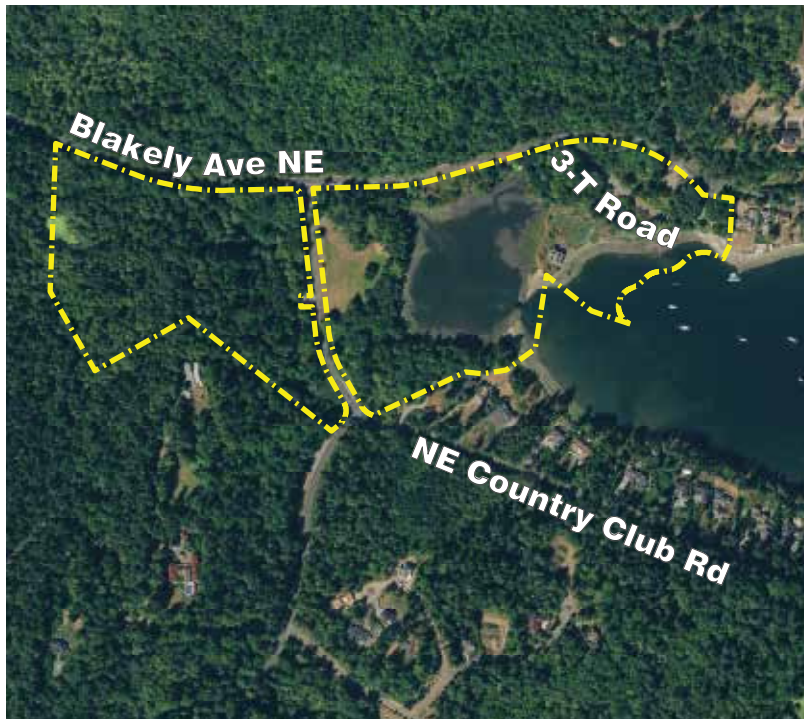
Transfer or grant stipulations apply to this property.



Battle Point Park/Fairy Dell



Blakely Harbor Park



10150 NE Country Club Rd

Acreage: 39.09 acres
Parking: 16 vehicles
Trails: 1.0 miles

A community park and natural area with wetlands, estuary, meadow and mill pond located on the former site of Port Blakely Mill, an 1800's era sawmill.

Park features:

Scenic & wildlife viewing, bench seating & picnic table, kayaking, swimming beach, trails and trailheads to Fort Ward Park & Blakely Cemetery.

Park facilities:

Kayak launch, generator building from prior mill era, restroom, bird blind, viewing platform, two parking areas. Installation of pedestrian bridge spanning the jetties anticipated in 2020.

Future potential improvements:

Continued site restoration, trail improvements, and interpretative signage. Also WA State environmental assessment, mitigation and re-adaptation related to overall site and generator building.

Use restrictions:

Transfer or grant stipulations apply to this property.



Camp Yeomalt

900 Park Avenue NE

Acreage: 2.80 acres
Parking: 20 vehicles
Trails: 0.13 mile

A neighborhood park with indoor community facilities on site of historic scout camp and lodge developed in 1935 by the Civilian Conservation Corps (CCC) and restored in 2008.

Park features:

Indoor facility space for art & nature classes, community events, scout programs including scout overnight camping, picnic tables, grass area, walking trail through woodlands, several fire pits with seating.

Park facilities:

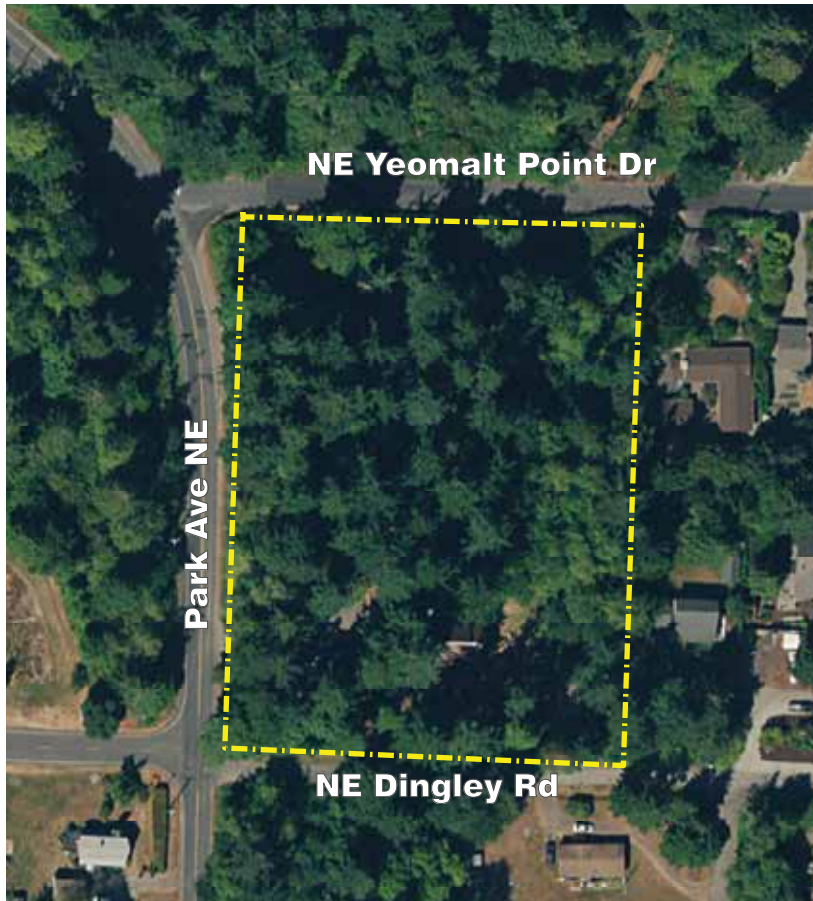
Renovated log cabin (capacity 50 person), multipurpose classroom building (capacity 20 person) and restroom.

Future potential improvements:

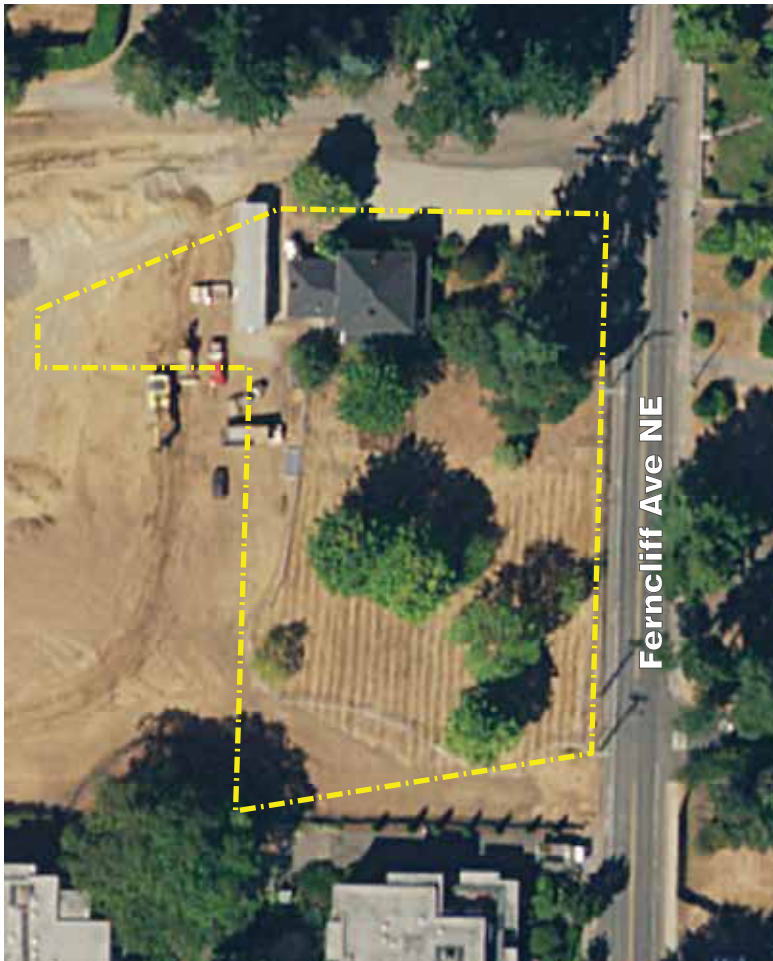
Siding improvements to multi-purpose building, assess/upgrade heating system of log cabin if needed.

Use restrictions:

Transfer or grant stipulations apply to this property.



Cave Family Heritage Park



259 Ferncliff Avenue NE (just north of the ferry terminal)

Acreage: 0.91 acres
Parking: walk-in park
Trails: none

A new special use park in Winslow for public benefit by developer with partial donation from the Cave family. Includes historic Cave family home.

Park features:

Playground, picnic table, benches, interpretative signage, sidewalk circulation.

Park facilities:

Historic two-story home.

Future potential improvements:

Improvements to historic home for future community use.

Use restrictions:

Transfer stipulations apply to this property.



Eagledale Park

5050 Rose Avenue NE

Acreage: 6.54 acres
Parking: 15 vehicles
Trails: limited

A community park with playground equipment and off leash dog area on former military Nike missile site.

Park features:

Play structure with climbing rocks, picnic tables & shelter, 0.5 basketball court, tennis court, sand volleyball court, classroom space for pottery/art classes, open grass area, labyrinth, view shed, one acre off leash dog park.

Park facilities:

Eagledale Pottery Studio (indoor facility for pottery/art classes with kilns and restroom).

Future potential improvements:

Renovate picnic shelter, resurface and reline tennis court, replace roof of pottery studio, possible upgrade/expansion of off leash dog park.

Use restrictions:

Transfer or grant stipulations apply to this property.



Fay Bainbridge Park



15446 Sunrise Drive

Acreage: 16.32 acres
Parking: 130 vehicles
Trails: footpaths and boardwalks to access shoreline

A regional park with extensive shoreline, dramatic views, and campground.

Park features:

Beach with 1,420 linear ft of saltwater shoreline, new play equipment, 3 picnic shelters (2 w/ fireplaces), picnic tables, 2 beach fire rings, horseshoe pits, sand volleyball court, and overnight campsites and cabins.

Park facilities:

Campground includes 26 RV campsites with electricity, 14 tent sites, 3 rental cabins, 1 Cascade Marine Trail camp site, two restrooms, wi-fi, and showers. Other facilities include maintenance shop & yard, and caretaker residence.

Future potential improvements:

Restroom/shower remodel, picnic shelter replacement, reconfigure tent sites, and additional cabin(s).

Use restrictions:

Transfer or grant stipulations apply to this property.



Fort Ward Historic Bakery



9705 NE Evergreen Avenue

Acreage: .20 acres
Parking: 20 vehicles
Trails: none

A new special use facility in the historic Fort Ward bakery building refurbished by Kitsap Sewer District #7 in partnership with Fort Ward Community Hall non-profit groups and the Park District. Leased by Sewer District to Park District for use as a community hall.

Park features:

Indoor facility space for programs, classes, and community events.

Park facilities:

Former Fort Ward bakery building with multi-purpose meeting space, kitchen, restrooms, and office.

Future potential improvements:

Possible parking improvements.

Use restrictions:

Lease and grant stipulations apply to this property.



Fort Ward Parade Grounds



Park View Drive

Acreage: 2.65 acres

Parking: 3 vehicles

Trails: none

A neighborhood park that is located on the former parade grounds of Fort Ward and has significance to the Fort Ward Historic District.

Park features:

Open grass area for walking, informal play, and neighborhood activities.

Park facilities:

Open grass area.

Future potential improvements:

Playground.

Use restrictions:

Transfer or grant stipulations apply to this property.



Fort Ward Park

2241 Pleasant Beach Drive

Acreage: 135.33 acres
Parking: 35 vehicles
Trails: 3.3 miles

A regional multiuse park with extensive woodlands and shoreline that overlooks Rich Passage. As part of the Fort Ward Historic District, Fort Ward is a vestige of the coastal defense system for the early 1900's designed to protect the Bremerton Naval Shipyard.

Park features:

4,300 linear ft of saltwater shoreline, hiking trails, view sheds, grass areas, picnic tables, boat launch, 2 mooring buoys, Cascade Marine Trail camp site & underwater diving park, 2 bird blinds, trail head for trail corridor that links Fort Ward Park to Blakely Harbor Park.

Park facilities:

Barracks and other historic remnants from fort era such as bunkers, 3 vault toilets.

Future potential improvements:

Barracks site has been affected by erosion. Picnic shelter to replace barracks, interpretative signage.

Use restrictions:

Transfer or grant stipulations apply to this property.



Gazzam Lake Nature Preserve



6105 NE Marshall Road (north entrance)

Acreage: 478.21 acres
Parking: 17 vehicles
Trails: 5.65 miles

A regional park and natural area with 14-acre lake, extensive wetlands, woodlands, and saltwater shoreline. This park began with the acquisition of Gazzam Lake & Nature Preserve and has since increased in size as additional adjacent properties were acquired (Peters, Close, Veterane, West Gazzam, Knudsen & Blossom properties).

Park features:

1,025 linear ft of saltwater shoreline (500 linear ft Close/525 linear ft Veterane), hiking trails such as Westwood Shore Trail and Peter's property trails.

Park facilities:

Restroom at Deerpath Lane NE park entrance.

Future potential improvements:

Possible viewing platform at lake, possible additional trail connections subject to underlying agreements, interpretation opportunities, and possible KPUD improvements to water tower facility.



Use restrictions:

Transfer or grant stipulations apply to this property.



Gideon Park



274 Gideon Lane

Acreage: 2.41 acres
Parking: limited
Trails: 0.2 miles

A neighborhood park with open grass area and playground in the Winslow vicinity.

Park features:

Playground equipment, open grass area for neighborhood games & activities, bird & butterfly garden, picnic table, walking trail.

Park facilities:

Log cabin used for caretaker residence.

Future potential improvements:

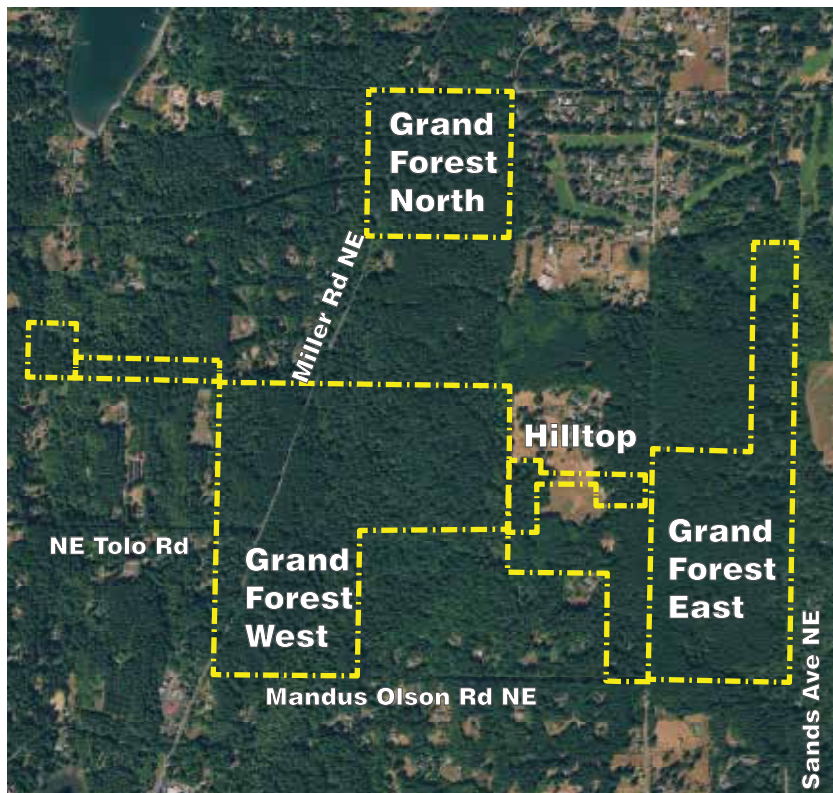
Playground upgrades.

Use Restrictions:

Transfer stipulations apply to this property.



Grand Forest



9752 Miller Road NE (Grand Forest West)
9594 Mandus Olson Road NE (Grand Forest East)

Acreage: 240.75 acres
Parking: 18 vehicles
Trails: 6.55 miles

A community park and natural area with an extensive trails system through woodlands, wetlands, and wildlife habitat. The Grand Forest consists of three separate parcels, Grand Forest West, Grand Forest East, and Grand Forest North. Hilltop is the name of the park parcel that links Grand Forest West with Grand Forest East. (See "Hilltop" for details).

Park features:

Multi-purpose trails throughout park, second-growth forests, seasonal creek.

Park facilities:

Passive park with trail opportunities.

Future potential improvements:

Restroom, parking improvements, proposed special purpose mountain bike trails in Grand Forest North, connection to Meigs Park via wildlife corridor, forest management & stewardship, invasive species removal.

Use restrictions:

Transfer or grant stipulations apply to this property.



Hawley Cove Park



1287 Wing Point Way NE

Acreage: 11.64 acres
Parking: 3-4 vehicles
Trails: 0.3 miles

A community park and natural area with Eagle Harbor shoreline and dramatic view of Mount Rainier.

Park features:

330 linear ft saltwater shoreline, upland forest, large wetland, recently expanded boardwalk with outlook and benches, walking trail from neighborhoods and Wing Point Way to shoreline.

Park facilities:

New boardwalk with outlook and benches, ADA parking and access improvements at Hawley Way NE.

Future potential improvements:

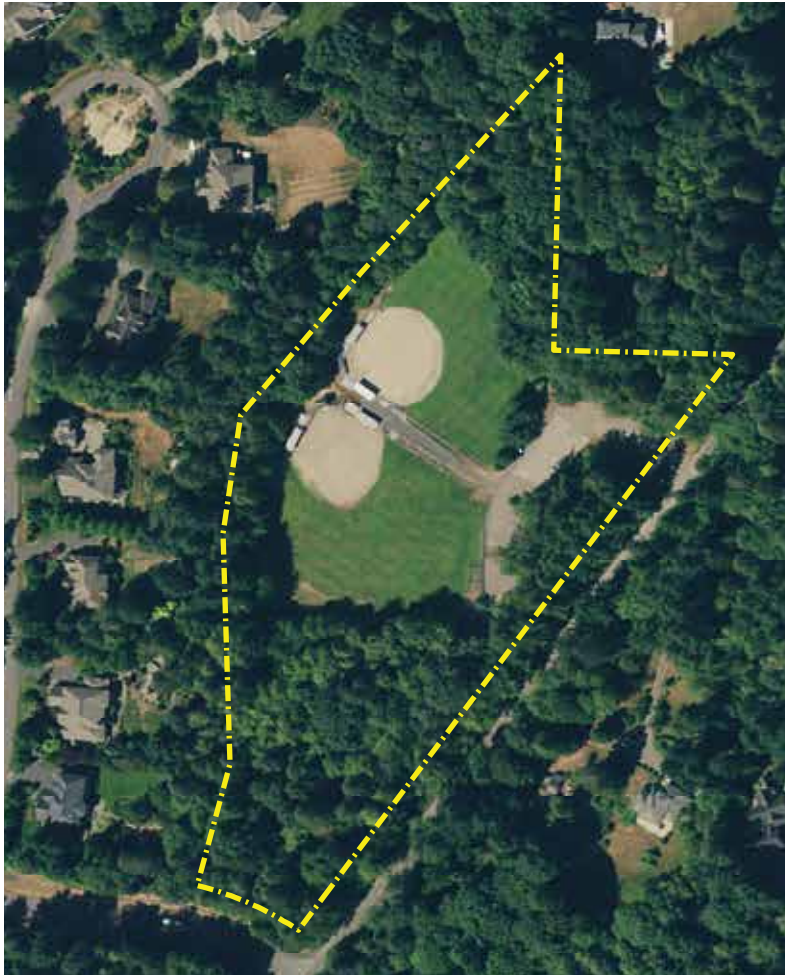
Additional ADA access improvements, interpretative signage, invasive species removal.

Use restrictions:

Transfer or grant stipulations apply to this property.



Hidden Cove Ballfields



13545 Phelps Road NE

Acreage: 7.78 acres

Parking: 35 vehicles plus overflow area

Trails: trailhead

A community park with athletic fields and access to extensive Hidden Cove trails system.

Park features:

2 grass Little League size baseball fields, spectator stands, scoreboards, equipment shed, soccer practice area overlay, picnic shelter, trailhead to Hidden Cove trails.

Park facilities:

Little League ballfield complex, seasonal portable toilets.

Future potential improvements:

Add play structure and trail improvements.

Use restrictions:

Developer dedication.



Hidden Cove Park

8588 Hidden Cove Road

Acreage: 5.72 acres
Parking: 19 vehicles
Trails: 0.3 miles

A community park with shoreline and views of Port Madison.

Park features:

Viewpoint, recently completed dock renovation, picnic tables, grass area, interpretative signage, restroom, ADA access, walking trail, and access to nearby Hidden Cove trails system.

Park facilities:

Dock for non-motorized use such as kayak and canoes, restroom.

Future potential improvements:

Picnic shelter, possible expansion of park property with trail connection.

Use restrictions:

Transfer or grant stipulations apply to this property.





Access off Mandus Olson Road

Acreage: 34.83 acres
Parking: parking area near barn
Trails: .7 miles

A community park and natural area that links Grand Forest West with Grand Forest East.

Park features:

Multi-purpose trails throughout park, second-growth forests, large meadow area with view shed, indoor facility with 1,000 sq. ft. meeting room, kitchen, and restroom.

Park facilities:

Prue's House (indoor facility used for classes and events), adjoining bunkhouse, two caretaker residences, barn, restroom.

Future potential improvements:

Trails, barn and parking improvements.

Use restrictions:

Transfer or grant stipulations apply to this property.



Island Center Hall

8395 Fletcher Bay Road

Acreage: 2.29 acres

Parking: 40 vehicles

Trails: none

A special use facility/park with historic community hall in partially wooded setting with grass area.

Park features:

Indoor facility space for programs, classes, and community events.

Park facilities:

Former community hall with multipurpose meeting space (capacity 150 person), small stage, kitchen, and restrooms.

Future potential improvements:

Trail connection, replace septic system.

Use restrictions:

Transfer or grant stipulations apply to this property



John Nelson Linear Park



Vineyard Lane off SR 305 & north of Winslow Way

Acreage: 0.80 acres
Parking: none
Trails: .33 miles

An open space linear park on land donated to the island for a public park in the mid-1900s by longtime resident John Nelson.

Park features:

Linear park with loop trail to ravine viewpoint, and adjacent to Sound to Olympics Trail.

Park facilities:

Passive park.

Future potential improvements:

Connection to Sound to Olympics Trail, bridge across ravine connecting linear park to adjacent neighborhoods, benches, and interpretative signage.

Use restrictions:

Transfer or grant stipulations apply to this property





200 block of Gowen Place NW located below St. Barnabas Episcopal Church

Acreage: 4.45 acres
Parking: none
Trails: limited access

A new open space park and natural area on shoreline with head of the bay tidelands.

Park features:
 400 linear ft of shoreline with tidelands.

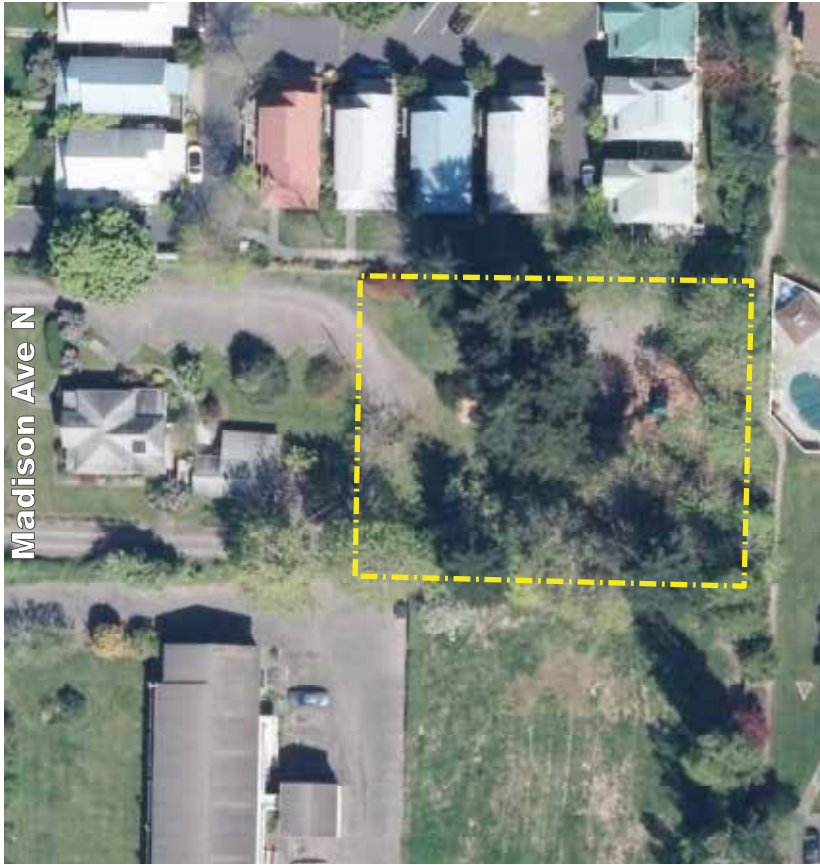
Park facilities:
 Passive park.

Future potential improvements:
 Trail improvements and boardwalk.

Use restrictions:
 Transfer or grant stipulations apply to this property.



Madison Tot Lot



598 Madison Avenue North

Acreage: 0.43 acres
Parking: no parking
Trails: none

A neighborhood park in Winslow with picnic table and play structure for young children.

Park features:
Play structure (ages 2-5), picnic table, benches, and walk-in location.

Park facilities:
Playground.

Future potential improvements:
None anticipated.

Use restrictions:
Transfer stipulations apply to this property.



Manitou Beach



9800 block of Manitou Beach Drive

Acreage: .90 acres

Parking: 4 vehicles

Trails: none

A new open space park and natural area with recreational shoreline and views.

Park features:

210 linear ft of shoreline with beach access and landing, expansive views of Seattle and Mount Rainier, parking across street on uplands side.

Park facilities:

Non-motorized small craft shoreline access such as kayaks and canoes.

Future potential improvements:

None anticipated.

Use restrictions:

Transfer or grant stipulations apply to this property.



Manzanita Park



7644 NE Day Road West

Acreage: 112.93 acres
Parking: 8 vehicles
Trails: 1.9 miles

A community park and natural area with wetlands and trails that is primarily used for equestrian purposes.

Park features:

Trails throughout park, close proximity to Bainbridge Island Saddle Club equestrian facility.

Park facilities:

Passive park with trail opportunities.

Future potential improvements:

Replace boardwalk, replace equestrian jumps as needed.



Meigs Park



11085 State Hwy 305 NE

Acreage: 97.09 acres
Parking: limited parking
Trails: 1.3 miles

An open space park and natural area with complex system of ponds and wetlands. City of Bainbridge Island transfer of Meigs 2 property added 29.64 acres to the park.

Park features:
Nature trails, old-growth spruce trees.

Park facilities:
Storage barn park facility.

Future potential improvements:
Trail improvements and boardwalk connecting via wildlife corridor to Grand Forest East, interpretative signage, invasive species removal, parking.

Use restrictions:
Transfer or grant stipulations apply to this property.



Moritani Preserve



140 ft west of Winslow Way West & Lovell Ave SW intersection

Acreage: 8.58 acres
Parking: walk-in park
Trails: .27 miles

A new open space park and natural area in Winslow with wooded and open grass areas including filtered views of Eagle Harbor. Property restored and generously donated to Park District by Fletcher Bay Foundation.

Park features:
Walk-in park with nature trails and benches for seating, trail connections to neighborhoods and Waterfront Trail.

Park facilities:
Passive park.

Future potential improvements:
Landscape restoration, trail improvements, invasive species removal, funding provided by Moritani Preserve Stewardship Fund overseen by Bainbridge Island Parks Foundation.

Use restrictions:
Transfer stipulations apply to this property.



Nute's Pond

2101 Toe Jam Hill Road

Acreage: 31.80 acres

Parking: limited

Trails: 0.8 miles

An open space park and natural area with sizable pond and significant wetland complex.

Park features:

Trails, pond, wetland, wildlife habitat and viewing.

Park facilities:

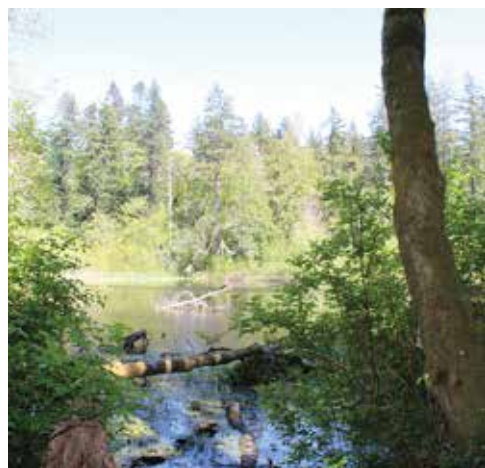
Passive park.

Future potential improvements:

Improved parking.

Use restrictions:

Transfer or grant stipulations apply to this property.



Point White Pier

3949 Crystal Springs Drive NE

Acreage: 0.69 acres

Parking: 10 vehicles

Trails: none

A community park on Rich Passage at site of historic Mosquito Fleet ferry dock.

Park features:

Saltwater shoreline access with fishing pier, beach, scuba diving, kayak launch and grass area for picnics.

Park facilities:

Pier and picnic tables.

Future potential improvements:

Pier replacement, upgrades and improvements, interpretative signage.

Use restrictions:

Land use restrictions apply to this property.



Pritchard Park

4192 Eagle Harbor Drive NE

Acreage: 21.94 acres + 9.42 acres upon COBI transfer (*see below)

Parking: 40 vehicles

Trails: yes



A regional park with natural areas and extensive saltwater shoreline. The park is under the joint ownership of the Park District and City of Bainbridge Island with the exception of the point which is owned solely by the City of Bainbridge Island. The point is undergoing federal and state Superfund clean-up efforts led by the Environmental Protection Agency with WA State Department of Ecology. Included in the park is the World War II Bainbridge Island Japanese American Exclusion Memorial designated by the federal government as a national historic site and an affiliate of the National Park Service.

Park features:

Saltwater shoreline access, beach, view sheds, trails. Also, memorial wall, site interpretation, information kiosks describing war-time internment under presidential Executive Order evacuation.

Park facilities:

Memorial site and interpretative features with drop-off area at Taylor Road.

Future potential improvements:

*Those portions of the park under joint Park District/City ownership will be transferred by the City of Bainbridge Island to the Park District along with an additional 9.42 acres currently under sole COBI ownership. COBI will retain ownership of the point (13.86 acres) as well as 4.22 acres located south of Eagle Harbor Drive.

Future possible uses include an off-leash dog area. Future possible improvements include picnic amenities, play area, hand-launch for kayaks, trail connection to Blakely Harbor Park, Phase 2 of the memorial including restroom and additional interpretation features.

Use restrictions:

Transfer or grant stipulations apply to this property.



Red Pine Park



Corner of Parfitt Way SW & Wood Ave SW

Acreage: 0.48 acres

Parking: 1-2 vehicles

Trails: walk-in park

A new special use park created and generously donated by a private party to the Park District.

Park features:

Garden setting with fruit trees, lawn, contemplative seating area and community garden plots.

Park facilities:

Community garden plots, garden shed.

Future potential improvements:

None anticipated.

Use restrictions:

Deed restrictions for park use.



Rockaway Beach



4002 Rockaway Drive NE

Acreage: .52 acres
Parking: 4 vehicles
Trails: none

An open space park with saltwater shoreline access near Blakely Harbor with expansive views of Puget Sound and Seattle.

Park features:

Saltwater shoreline access via stairs to beach, scuba diving destination, picnic table, and benches.

Park facilities:

Passive shoreline park.

Future potential improvements:

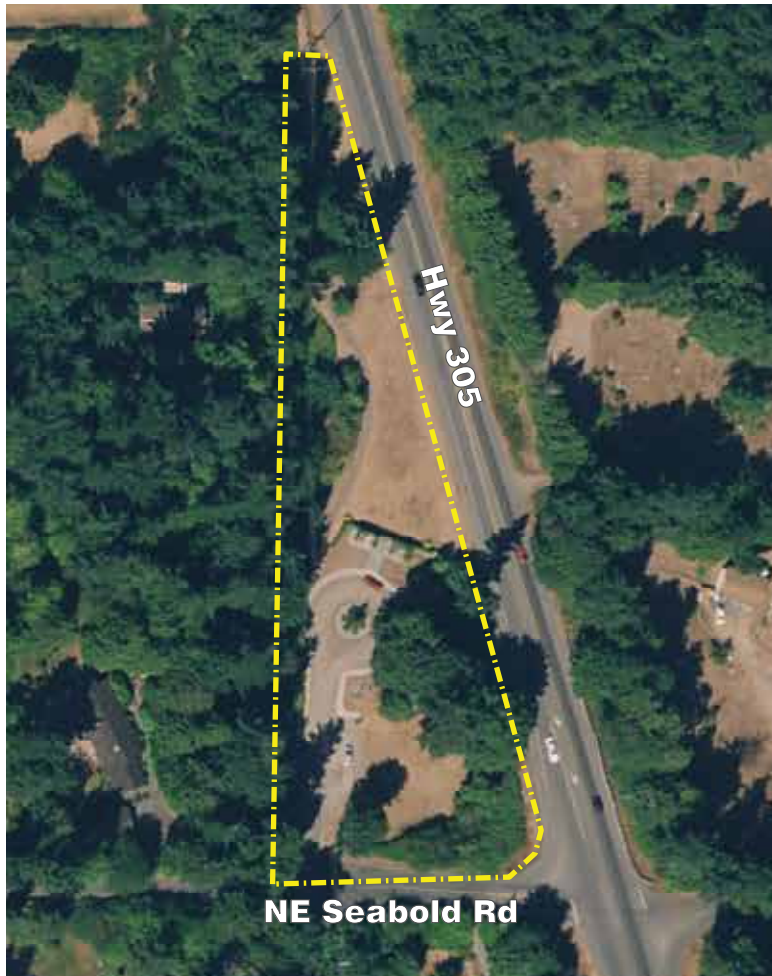
This site has been affected by erosion from rising sea levels.

Use restrictions:

Transfer or grant stipulations apply to this property.



Rotary Centennial Park



Off SR 305 near NE Seabold Road

Acreage: 0.75 acres
Parking: 5-7 vehicles
Trails: none

A special use gateway park to Bainbridge Island along SR 305 within WSDOT right-of-way at north end of island. The park was created in partnership with the Park District and the Rotary Club of Bainbridge Island to commemorate the Club's centennial anniversary. The park property is leased from WA State Department of Transportation.

Park features:

Interpretative signage, picnic facilities, grass area with shade trees.

Park facilities:

Interpretation wall, restroom, parking.

Future potential improvements:

Lighting improvements.

Use restrictions:

WSDOT lease restrictions.



Rotary Park

7696 Weaver Rd

Acreage: 9.60 acres

Parking: 80 vehicles

Trails: 0.4 miles

A community and athletic park in Winslow originally donated as the island's first park by the Rotary Club of Bainbridge Island.

Park features:

2 recently renovated grass Little League size baseball fields with covered batting cage and spectator stands, new building with indoor facility space for meetings or community events, picnic facilities, inclusive play area, wooded and grass areas with trail connection to adjoining neighborhoods, electric car charging station and solar electric system.

Park facilities:

Ballfields, Owen's Playground, multipurpose building with concession stand, meeting room, and restroom.

Future potential improvements:

Picnic shelter, field drainage improvements.

Use restrictions:

Transfer or grant stipulations apply to this property.



Sakai Park



1560 Madison Avenue NE

Acreage: 22.87 acres
Parking: 4-6 vehicles & some street parking
Trails: underway

A new regional park in Winslow with natural areas, wetlands, and pond. Formerly site of Sakai family farm.

Park features:

Close proximity to schools and aquatic center, trails through natural areas with connection to Sound to Olympics Trail.

Park facilities:

Sakai family residence is not available to public at present time.

Future potential improvements:

Possible improvements include expanded trail system and public outdoor areas including picnic shelters, nature play area, and outdoor courts; an all-age community recreation center including indoor athletic facility with fields, elevated track, courts and gymnastics area, indoor program space, multi-purpose area, offices and meeting rooms. These improvements are indicated in the adopted Sakai Park concept plan and subsequent feasibility study. For details see: https://biparks.org/wp-content/uploads/2016/03/sakai_concept_plan_report_final_121117.pdf

Use restrictions:

Wetlands and zoning restrictions apply to this property which has approximately 2 buildable acres. Development of concept plan is subject to funding and permitting.



Sakai Park

Concept Plan Option A



Sakai Park

Concept Plan Option B



Sands Avenue Ballfields



8641 Sands Avenue

Acreage: 10.0 acres
Parking: 73 vehicles
Trails: none

A community athletic park on property owned by the Bainbridge Island School District and leased to the Park District until such time as the site will be developed for School District purposes.

Park features:
300-foot grass baseball/soccer fields with spectator stands.

Park facilities:
Storage shed, seasonal portable toilet.

Future potential improvements:
Irrigation and turf upgrade.

Use restrictions:
School District lease restrictions.



Schel Chelb Park



7595 Heron Hall Lane NE (south of Lynwood Center)

Acreage: 1.64 acres
Parking: 4-6 vehicles
Trails: trail linkages

A neighborhood park and natural area with wetlands and shoreline access on Rich Passage.

Park features:

Saltwater shoreline across Point White Drive, swimming beach, open grass area, playground, parking, trail linking to neighborhood and Gazzam trail network.

Park facilities:

Playground, parking, restroom.

Future potential improvements:

Landscape and historical interpretation to denote Native American significance of site.

Use restrictions:

Transfer or grant stipulations apply to this property.



Seabold Hall



14450 Komedal Road

Acreage: 1.0 acres
Parking: 20 vehicles
Trails: none

A special use facility/park with historic community hall donated by neighborhood association.

Park features:

Indoor facility space for programs, classes, and community events. Also grass area and small basketball court.

Park facilities:

Community hall building with multi-purpose meeting space (capacity 80 people), kitchen and restrooms.

Future potential improvements:

Structural and other building improvements, play area, landscape upgrades, parking improvements.

Use restrictions:

Deed restrictions apply to this property.



Strawberry Hill Park



7666 NE High School Road

Acreage: 17.64 acres
Parking: 125 vehicles
Trails: trailhead

A multipurpose community park with athletic fields and Park District administrative office on former military Nike missile site.

Park features:

3 softball fields, 1 lighted football field, concession stand, skatepark, 1 tennis court, picnic shelter, playground, indoor facility space for classes and programs, off leash dog park, and trail connection to neighborhood.

Park facilities:

Strawberry Hill Center with meeting rooms & kitchen, Mini-Gym (former missile assembly building), administrative building (former barracks), restrooms, storage sheds.

Future potential improvements:

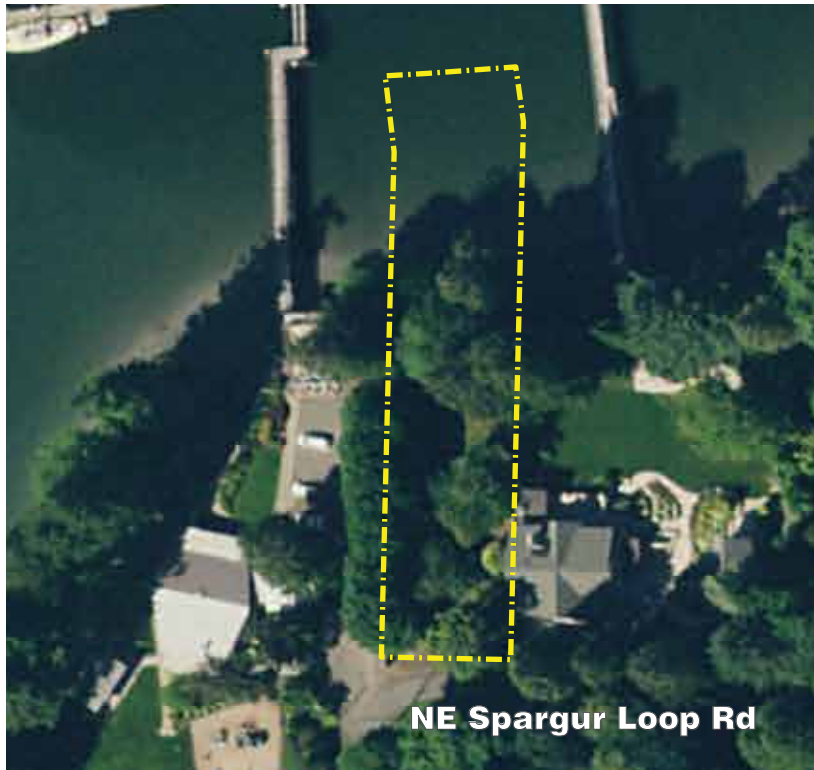
Resurface/replace tennis court, improvements to skate park, additional trail connections. On-going maintenance to administration building until facilities at Sakai Park or another location are secured, or decision is made to construct new office building at Strawberry Hill Park.

Use restrictions:

Transfer or grant stipulations apply to this property.



T'Chookwap Park



8800 NE Spargur Loop Road

Acreage: 0.32 acres

Parking: none

Trails: none

A small open space park with contemplative viewpoint overlooking Port Madison and beyond to Puget Sound.

Park features:

Upland waterfront and tidelands, view shed, bench, and grass area.

Park facilities:

Passive park.

Future potential improvements:

Landscape improvements.

Use Restrictions:

Transfer stipulations apply to this property.



Ted Olson Nature Preserve



11800 North Madison Avenue

Acreage: 15.3 acres
Parking: 4 vehicles
Trails: 0.6 miles

An open space park with natural areas, trails, woodlands and wetlands.

Park features:

Nature trail, interpretative signage, trail connection to neighborhood, parking.

Park facilities:

Passive park.

Future potential improvements:

Invasive species removal.

Use restrictions:

Transfer or grant stipulations apply to this property.





Winslow Way & SR 305 near WSDOT ferry terminal

Acreage: 1.10 acres
Parking: none
Trails: Pass-through plaza to Winslow

A pedestrian linear park serving as a gateway to the island as people arrive from the ferry. Formerly the site of a vacated gas station, it was converted into a park in 2013 through the joint effort of private and public partnerships. The site is owned by Kitsap Transit and the City of Bainbridge Island and managed by the Park District under a long-term operating lease.

Park features:
 Benches, landscaping and interpretation.

Park facilities:
 Plaza with benches for seating adjacent to Waypoint Woods with connection to Water-front Trail.

Future potential improvements:
 Landscape improvements.

Use restrictions:
 Lease restrictions apply to this property.



Waypoint Woods



Adjacent to The Waypoint & WSDOT ferry terminal

Acreage: 3.68 acres
Parking: none
Trails: .22 miles

A new open space park near the ferry with woodlands and trails connecting to Waterfront Park and Waterfront Trail. Property is leased to the Park District by WA Department of Transportation and was developed in partnership with the Bainbridge Island Parks Foundation and Park District.

Park features:
 Nature trails and filtered views of Eagle Harbor.

Park facilities:
 Passive park.

Future potential improvements:
 Additional trail improvements, benches, entry plaza with interpretive features, table and planter/seating walls as indicated in Jones & Jones concept plan developed for the BI Parks Foundation.

Use restrictions:
 Lease stipulations apply to this property.



West Port Madison Nature Preserve

8334 NE County Park Road

Acreage: 12.29 acres

Parking: 4 vehicles

Trails: 0.4 miles

A community park and natural area with saltwater shoreline on Port Madison adjoining the Bloedel Reserve.

Park features:

Woodlands and wetlands, 2 small picnic shelters, walking trail, viewpoint, and 210 ft of high bank saltwater shoreline.

Park facilities:

Small picnic shelters.

Future potential improvements:

Possible off leash dog area in former caretaker area.

Use restrictions:

Transfer stipulations apply to this property



Williams Olson Park



6200 NE Williams Lane

Acreage: 3.81 acres
Parking: 3 vehicles
Trails: none

A community park with saltwater shoreline access on Manzanita Bay.

Park features:

415 linear ft saltwater shoreline access plus road end and public tidelands, kayaking, view shed, grass area, picnicking.

Park facilities:

One pickleball court, parking.

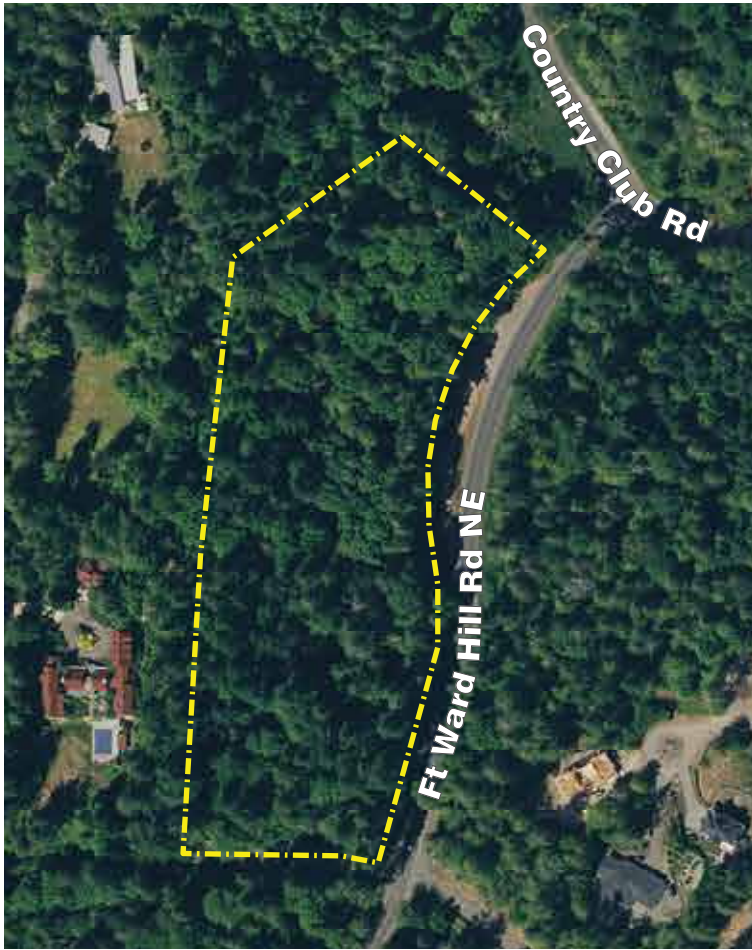
Future potential improvements:

Picnic shelter, play area, kayak storage, parking increased to 7 vehicles plus ADA parking and seasonal restroom, pickleball court improvements, landscape restoration. These improvements are indicated in the adopted concept plan. Add buoy(s) to tidelands.

Use restrictions:

Transfer and grant stipulations apply to this property.





Adjacent to Blakely Harbor Park

Acreage: 7.40 acres
Parking: none
Trails: none

An open space park and natural area acquired for historic preservation purposes adjacent to Blakely Harbor Park.

Park features:

Wooded area on site of former mill town village.

Park facilities:

Passive park with historic conservancy.

Future potential improvements:

Historical study by Bainbridge Island Historical Society was concluded in 2019. Future park, trail improvements and interpretation are anticipated as an outcome of this study.

Use restrictions:

Transfer or grant stipulations apply to this property.



Chapter 5: Outdoor Facility Features

DRAFT 11/04/19 (subsequent review)

[illegible]

[illegible]

		Playground	Soccer Fld - Youth	Soccer Fld - Adult/Youth	Lacrosse Fld	Football Fld	Baseball/Softball - Youth	Baseball/Softball Fld A/Y	Roller Hockey Court	Basketball Court	Tennis Court	Pickleball Court	Volley Ball Court - Sand	Boat Ramp	Campground	Dog Off Leash Area	Picnic Shelter	Salt Water Access/Trails	Skatepark Facilities	Swim/Scuba/Watr Aq Fac
	Private Properties																			
1	Meadowmeer Golf Course																			
2	Wing Point County Club										2									1
3	Winslow Green																			
4	Harbor Square																			
	Non-Profit Properties																			
1	Bloedel Reserve																	1		
2	IslandWood																			
	Private Facilities																			
1	American Legion Hall																			
2	Bainbridge Athletic Club/Pool										6									1
3	Bainbridge Dance Center																			
4	BI Filipino-American Hall																			
5	BI Grange Hall																			
6	BI Sportsman Club																			
7	Hyla Middle School	1	1																	
8	Island Fitness																			
9	Island School	1																		
10	Lynwood Theater																			
11	Pleasant Beach Village Pool & Fitness																			1
12	St Cecilia Catholic School	1																		
Grand Total		19	10	5	4	3	14	5	1	10	18	7	2	2	2	2	11	21	1	15

NOTE: regarding Battle Point Field Use

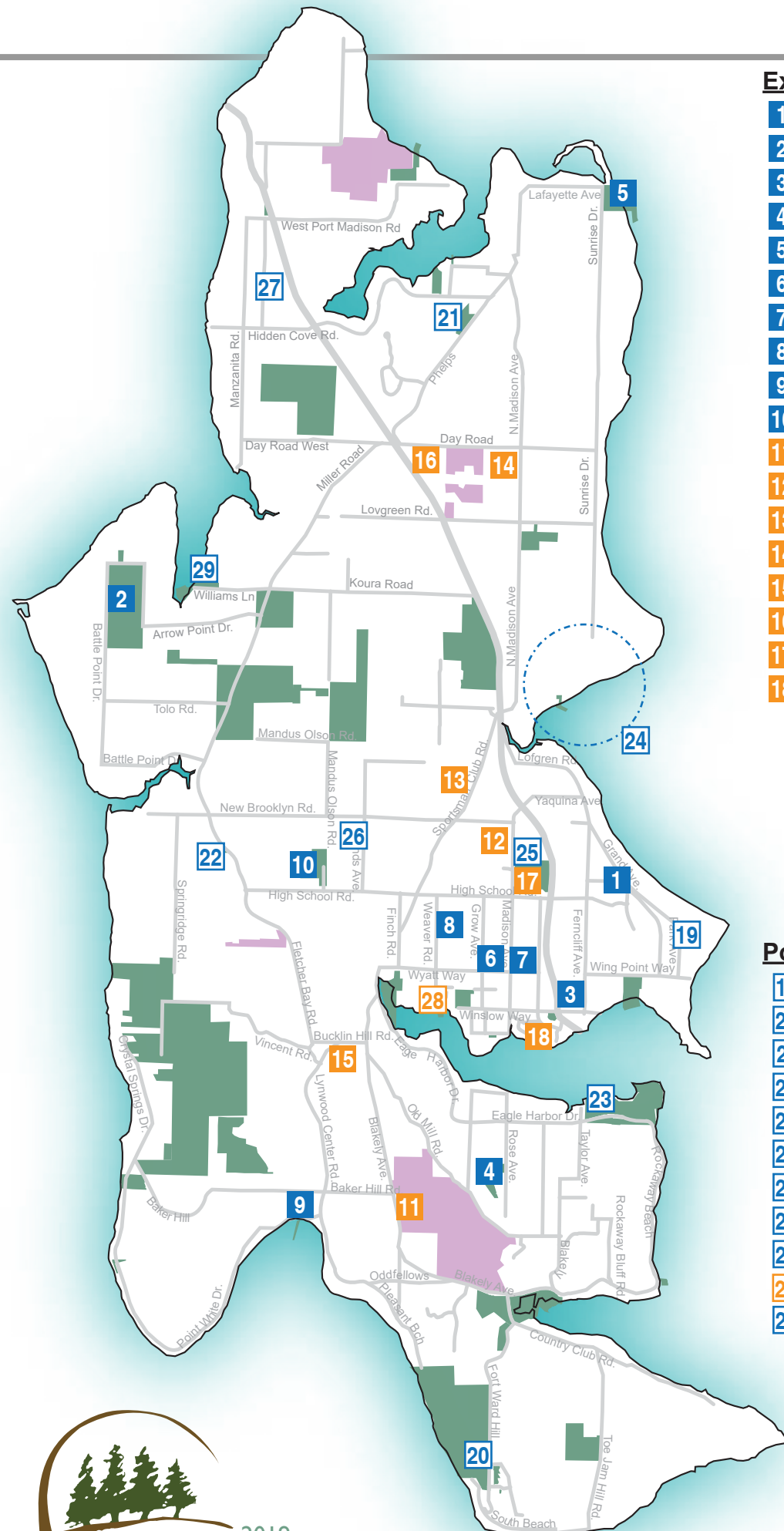
- 1) Youth also use adult fields
- 2) BPP fields are also used for senior programs

Existing Playgrounds

- 1** Aaron Avenue Tot Lot
- 2** Battle Point Park
- 3** Cave Heritage Park
- 4** Eagledale Park
- 5** Fay Bainbridge Park
- 6** Gideon Park
- 7** Madison Avenue Tot Lot
- 8** Rotary Park
- 9** Schel Chelb
- 10** Strawberry Hill Park
- 11** Blakely Elementary
- 12** Ordway Elementary
- 13** Sonoji Sakai Intermediate School
- 14** Wilkes Elementary
- 15** Hyla Middle School
- 16** Island School
- 17** St. Cecilia Catholic School
- 18** Waterfront Park

Potential Playgrounds

- 19** Camp Yeomalt
- 20** Fort Ward Park or Parade Grds.
- 21** Hidden Cove Ballfields
- 22** Island Center Hall
- 23** Pritchard Park (co-owned COBI)
- 24** Rolling Bay
- 25** Sakai Park
- 26** Sands Avenue Ballfields
- 27** Seabold Hall
- 28** Strawberry Plant Park
- 29** Williams Olson Park

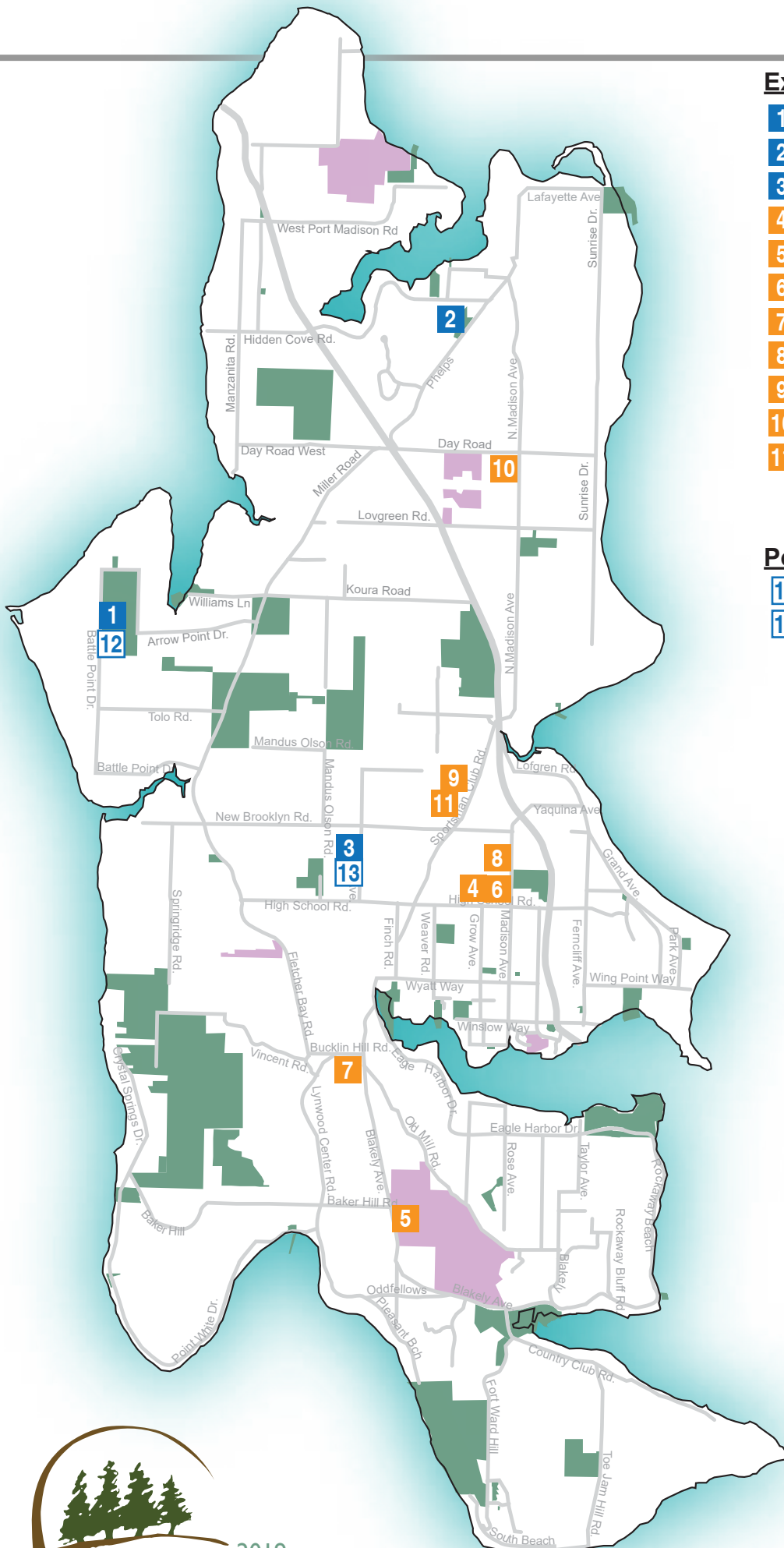


Existing Soccer Fields

- 1** Battle Point Park
- 2** Hidden Cove Ballfields
- 3** Sands Ave. Ballfield
- 4** Bainbridge High School
- 5** Blakely Elementary
- 6** Commodore Options School
- 7** Hyla Middle School
- 8** Ordway Elementary
- 9** Sonoji Sakai Intermediate School
- 10** Wilkes Elementary
- 11** Woodward Middle School

Potential Soccer Field Improvements

- 12** Battle Point Park
- 13** Sands Ave. Ballfield



Lacrosse/Football Fields

Existing Lacrosse Fields

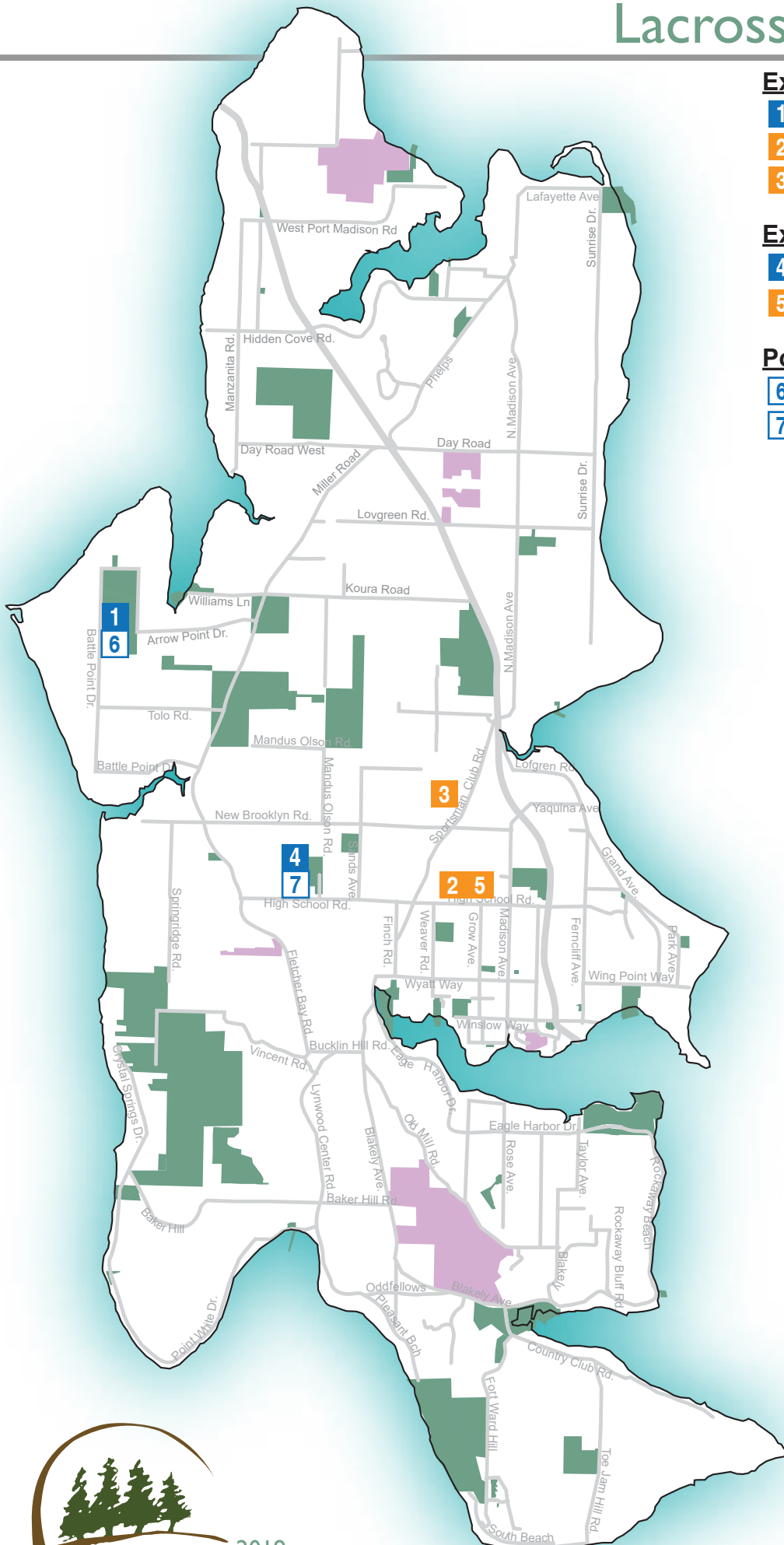
- 1** Battle Point Park
- 2** Bainbridge HS
- 3** Woodward MS

Existing Football Fields

- 4** Strawberry Hill Park
- 5** Bainbridge HS

Potential Field Improvements

- 6** Battle Point Park
- 7** Strawberry Hill Park



Baseball/Softball Fields

Existing Youth Fields

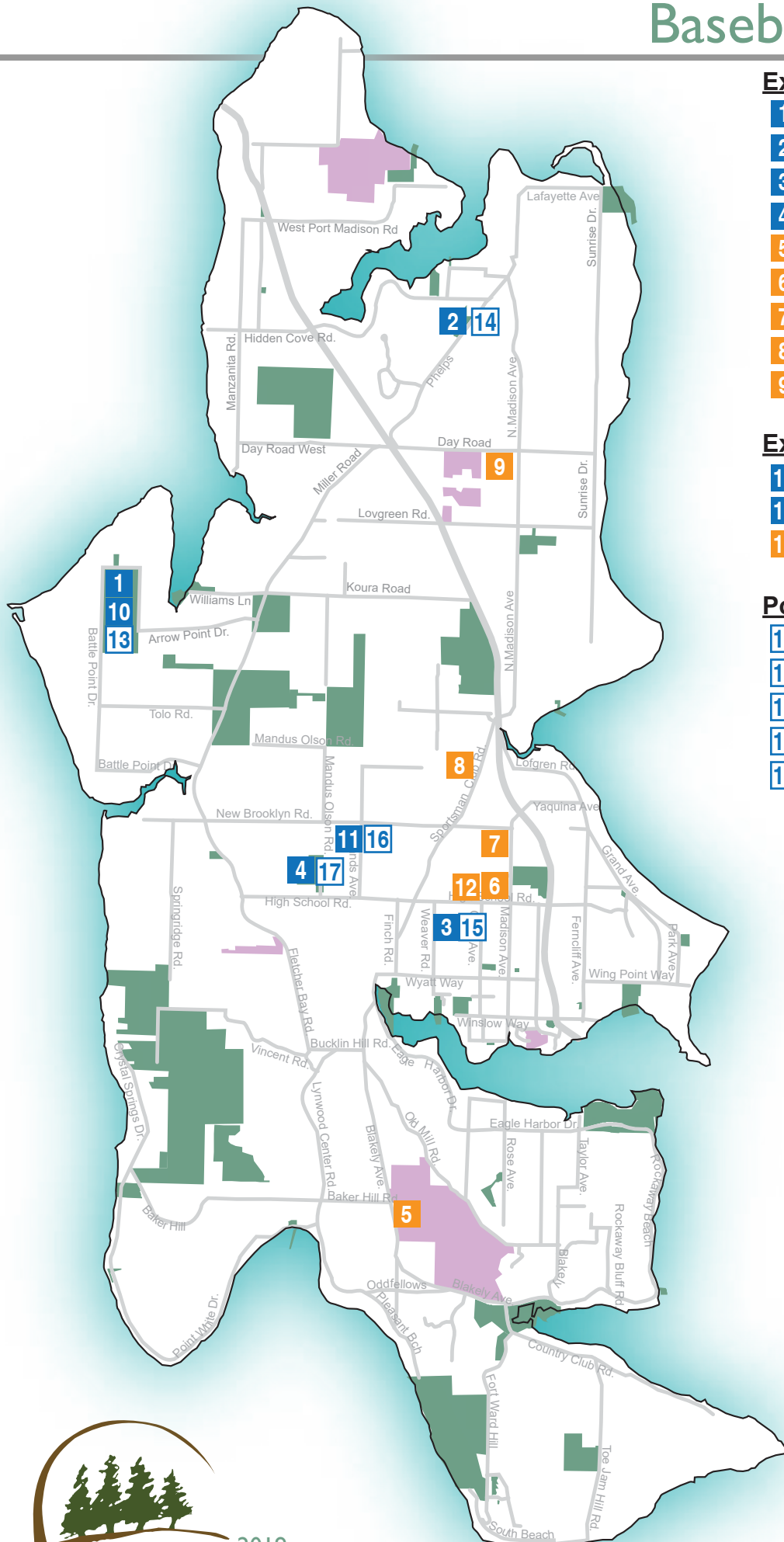
- 1** Battlepoint Park
- 2** Hidden Cove Ballfields
- 3** Rotary Park
- 4** Strawberry Hill Park
- 5** Blakely Elementary
- 6** Commodore Options School
- 7** Ordway Elementary
- 8** Sonoji Sakai Intermediate School
- 9** Wilkes Elementary

Existing Youth/Adult Fields

- 10** Battlepoint Park
- 11** Sands Ave. Ballfield
- 12** Bainbridge High School

Potential Field Improvements

- 13** Battlepoint Park
- 14** Hidden Cove
- 15** Rotary Park
- 16** Sands Ave. Ballfields
- 17** Strawberry Hill Park



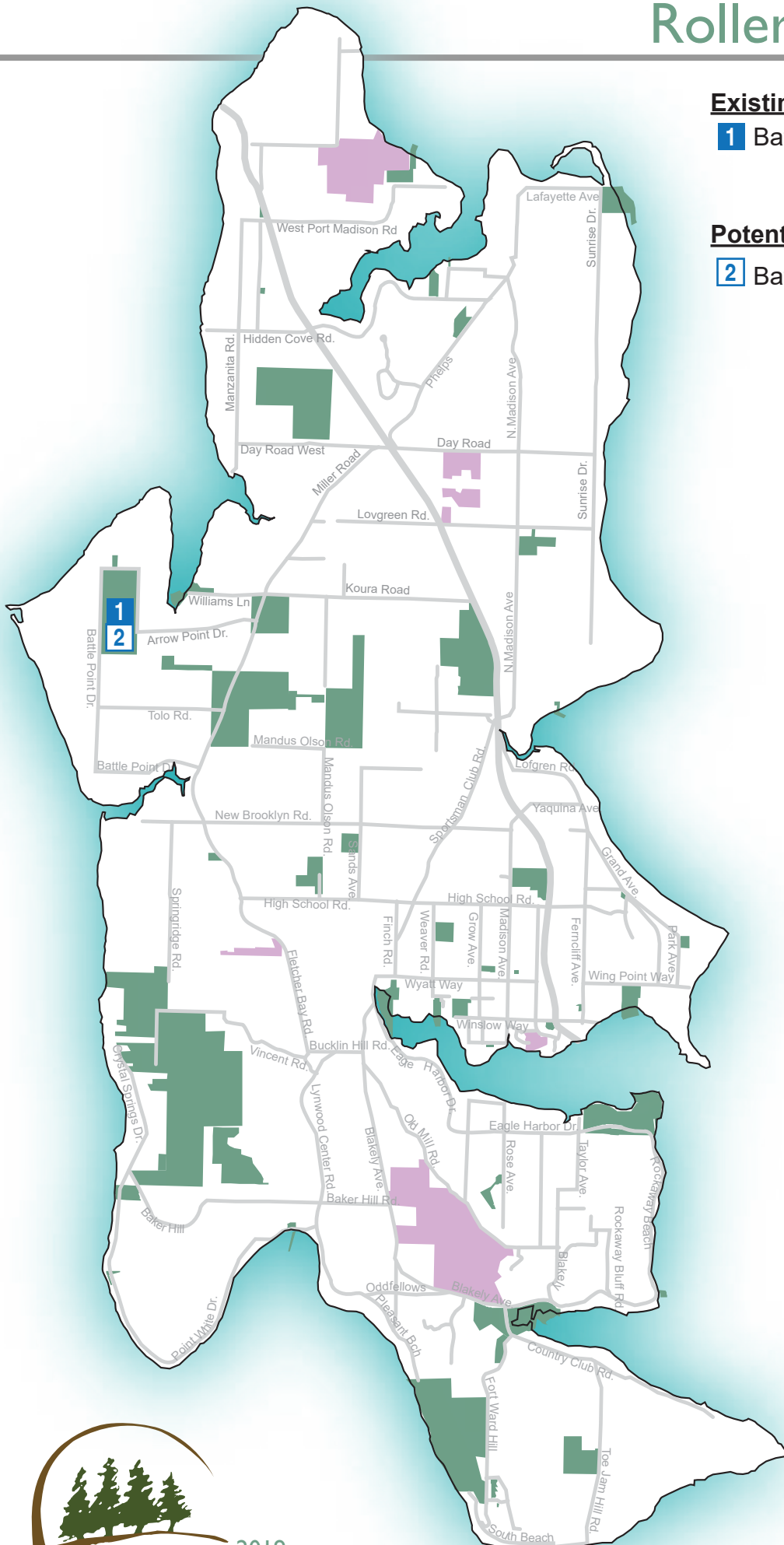
Roller Hockey Courts

Existing Roller Hockey Courts

1 Battle Point Park

Potential Court Improvements

2 Battle Point Park



Existing Basketball Courts

- ## Potential Basketball Courts

- 10 Aaron Tot Lot
- 11 Hidden Cove Ballfields
- 12 Rolling Bay
- 13 Rotary Park
- 14 Sakai Park
- 15 Sands Avenue Ballfields
- 16 Strawberry Hill Park

Tennis Courts

Existing Outdoor Tennis Courts

- 1** Battle Point Park
- 2** Eagledale Park
- 3** Strawberry Hill Park
- 4** Bainbridge HS
- 5** Wing Point Club

Existing Covered Tennis Courts

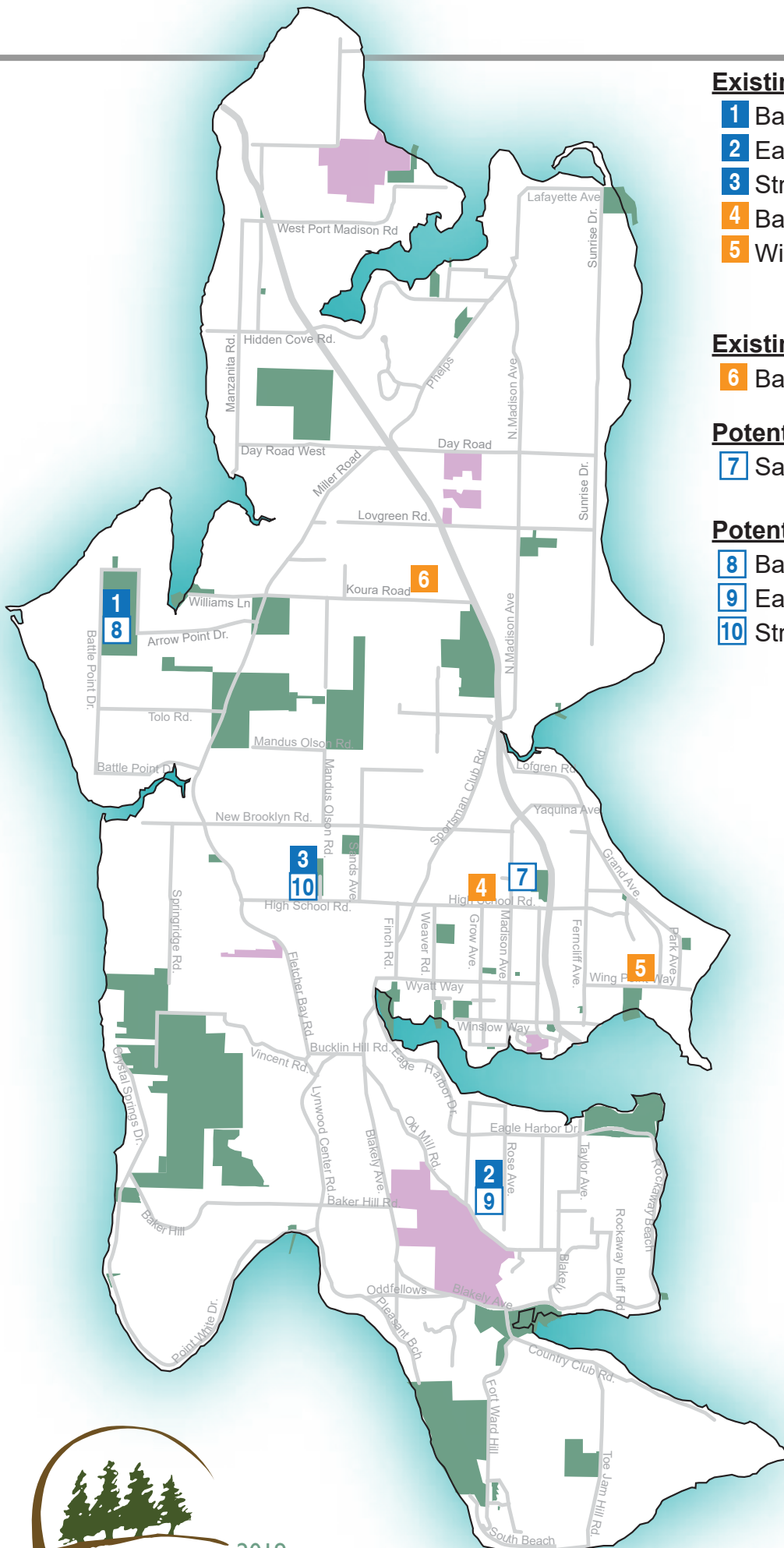
- 6** Bainbridge Athletic Club

Potential Outdoor Tennis Court Additions

- 7** Sakai Park

Potential Court Improvements

- 8** Battle Point Park
- 9** Eagledale Park
- 10** Strawberry Hill Park



Pickleball Courts

Existing Outdoor Pickleball Courts

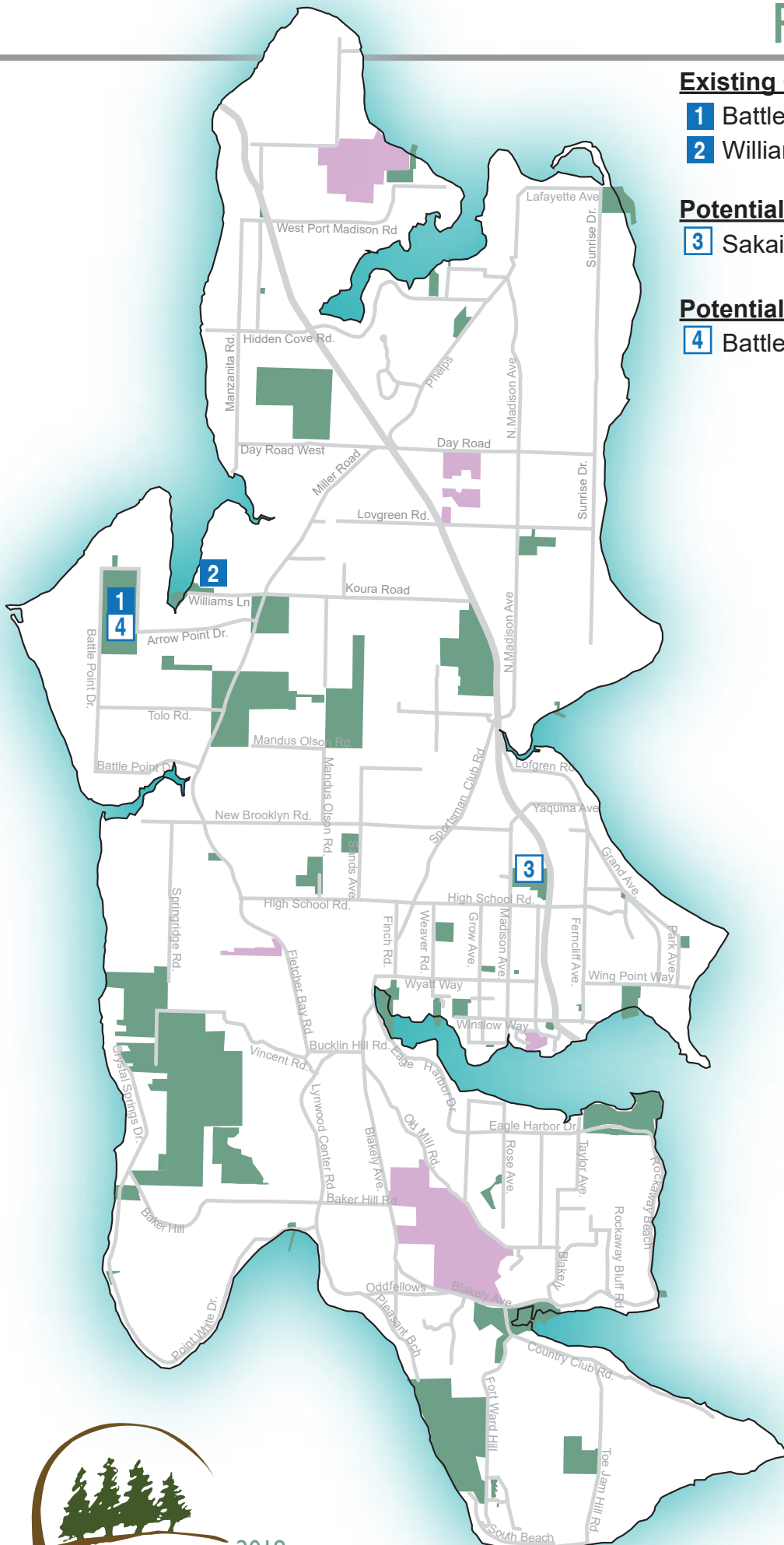
- 1** Battle Point Park
- 2** Williams Olson

Potential Outdoor Pickleball Court Overlay

- 3** Sakai Park

Potential Outdoor Pickleball Court

- 4** Battle Point Park



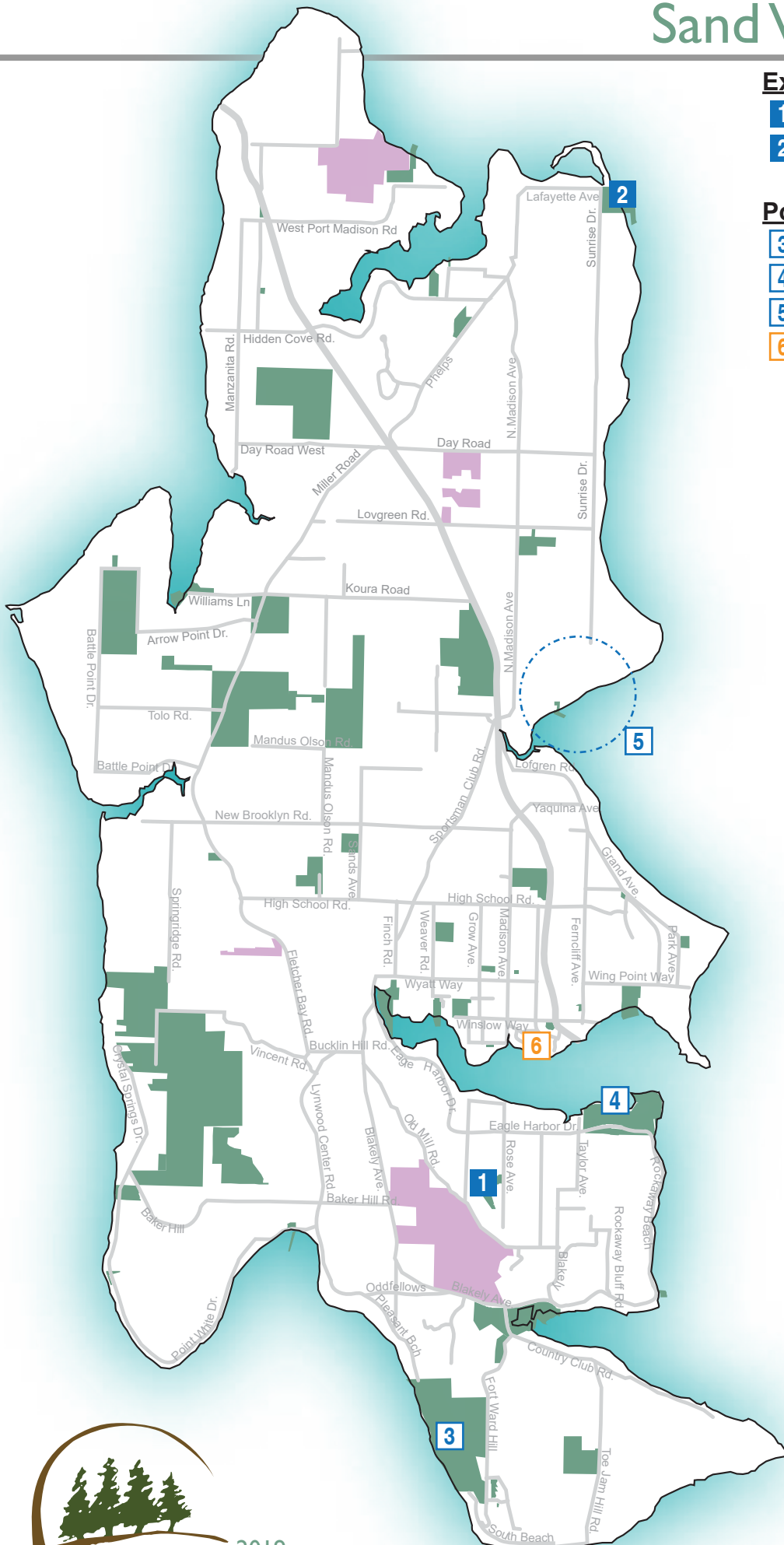
Sand Volleyball Courts

Existing Sand Volleyball Courts

- 1** Eagledale Park
- 2** Fay Bainbridge Park

Potential Sand Volleyball Courts

- 3** Fort Ward Park
- 4** Pritchard Park
- 5** Rolling Bay
- 6** Waterfront Park



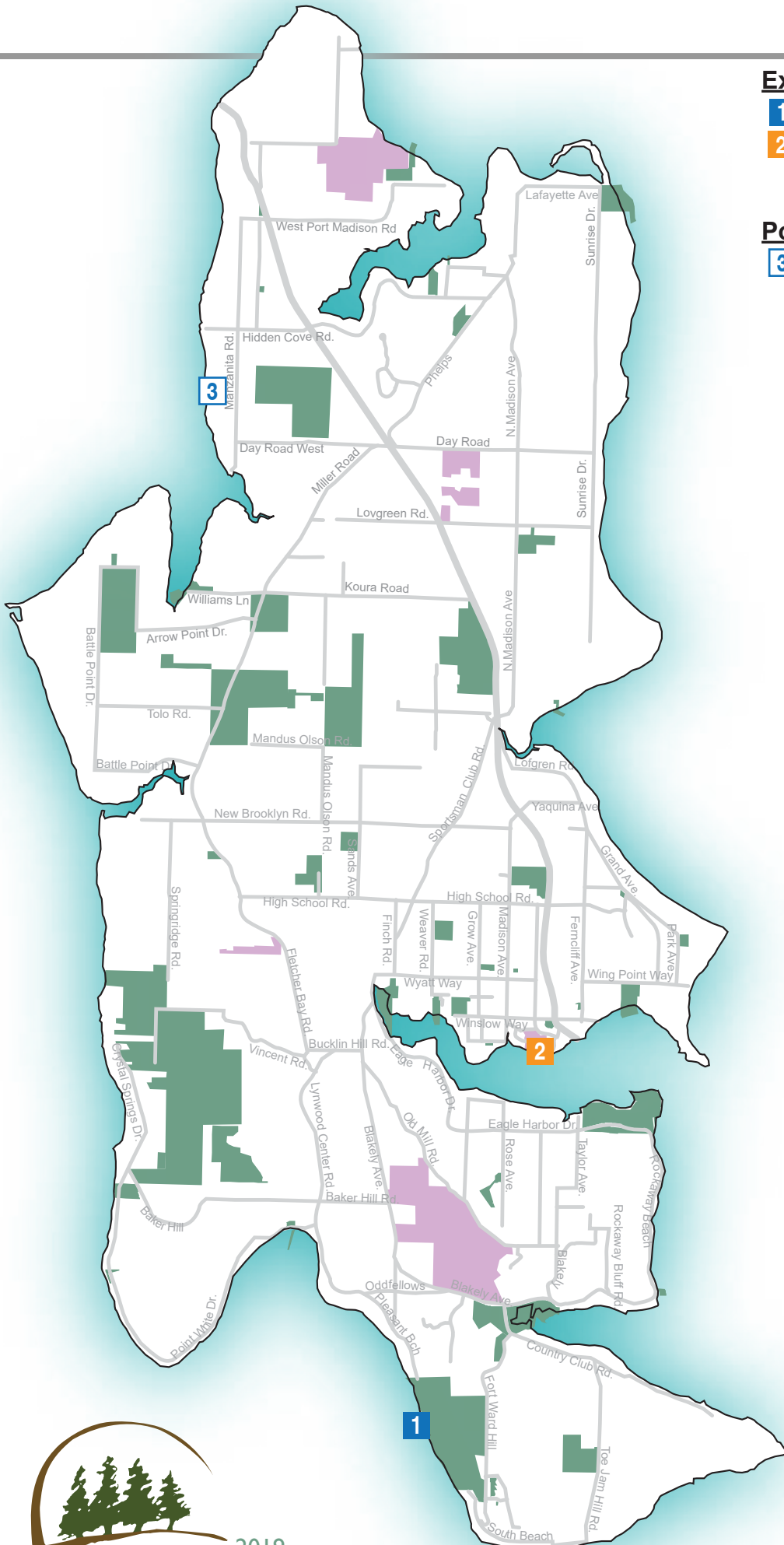
Boat Ramps

Existing Boat Ramps

- 1 Fort Ward Park
- 2 Waterfront Park

Potential Boat Ramps

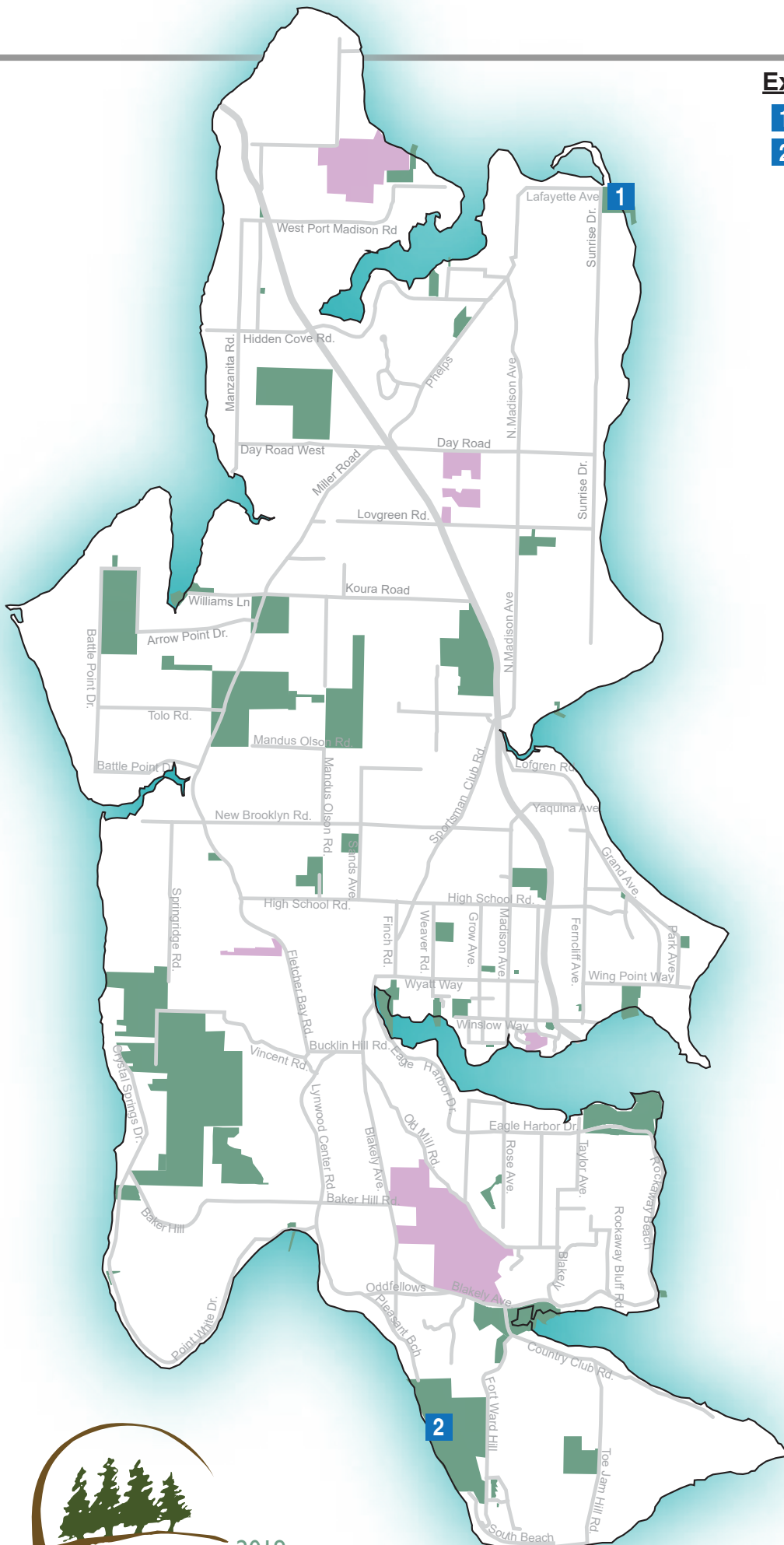
- ### 3 Manzanita Road



Campgrounds

Existing Campgrounds

- 1** Fay Bainbridge Park
- 2** Fort Ward Park (Cascade Marine Trail)



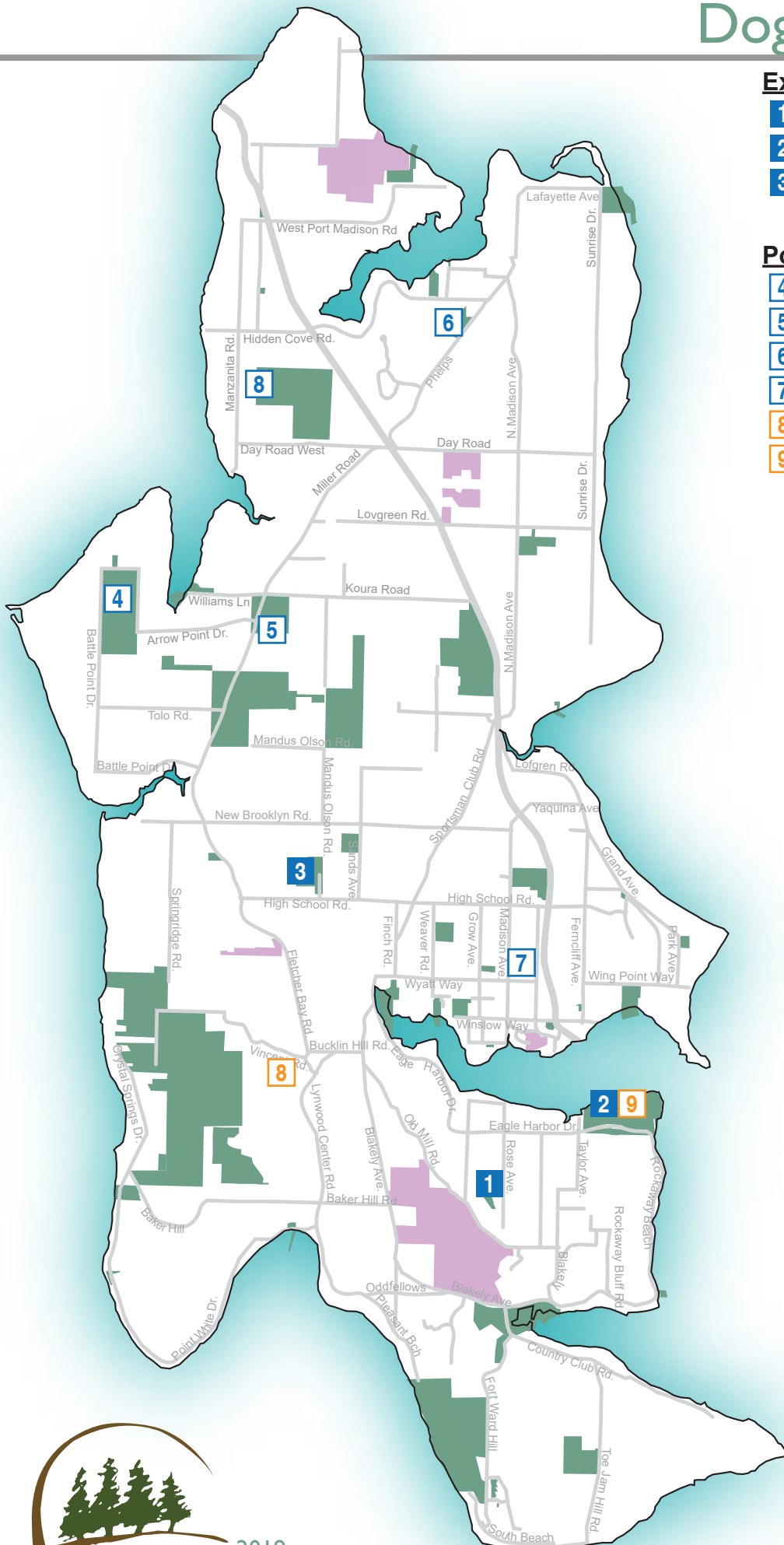
Dog Off-leash Areas

Existing Off Leash Dog Areas

- 1** Eagledale Park
- 2** Pritchard Park
- 3** Strawberry Hill Park

Potential Off Leash Dog Areas

- 4** Battle Point Park
- 5** Grand Forest North
- 6** Hidden Cove Ballfield
- 7** West Manzanita
- 8** Vincent Road
- 9** Pritchard Park



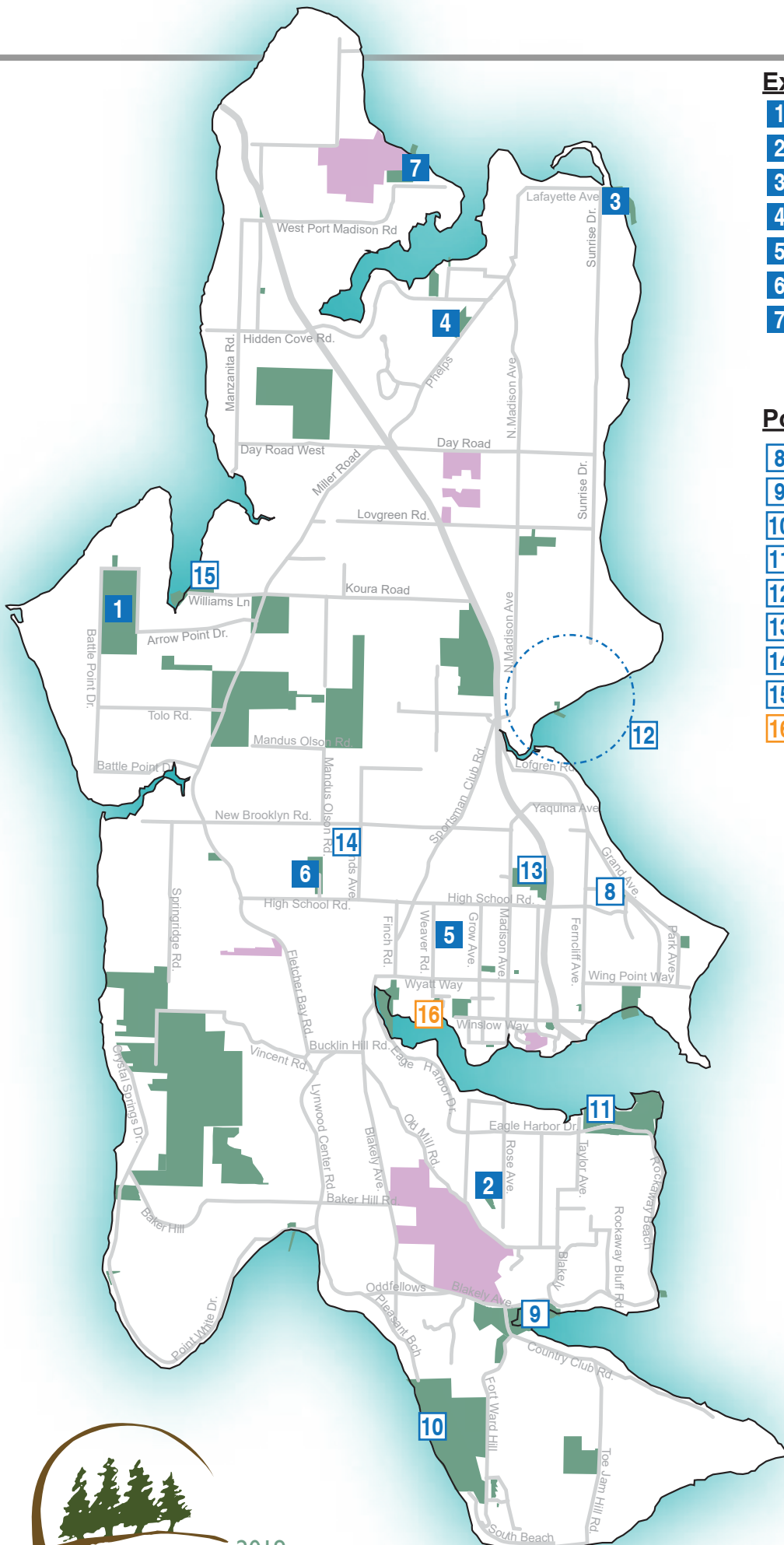
Picnic Shelters

Existing Picnic Shelters

- 1** Battlepoint Park
- 2** Eagledale Park
- 3** Fay Bainbridge Park
- 4** Hidden Cove Ballfields
- 5** Rotary Park
- 6** Strawberry Hill Park
- 7** West Port Madison Nature Preserve

Potential Picnic Shelters

- 8** Aaron Avenue Tot Lot
- 9** Blakely Harbor Park
- 10** Fort Ward Park
- 11** Pritchard Park
- 12** Rolling Bay
- 13** Sakai Park
- 14** Sands Avenue Ballfield
- 15** Williams Olson Park
- 16** Strawberry Plant Park



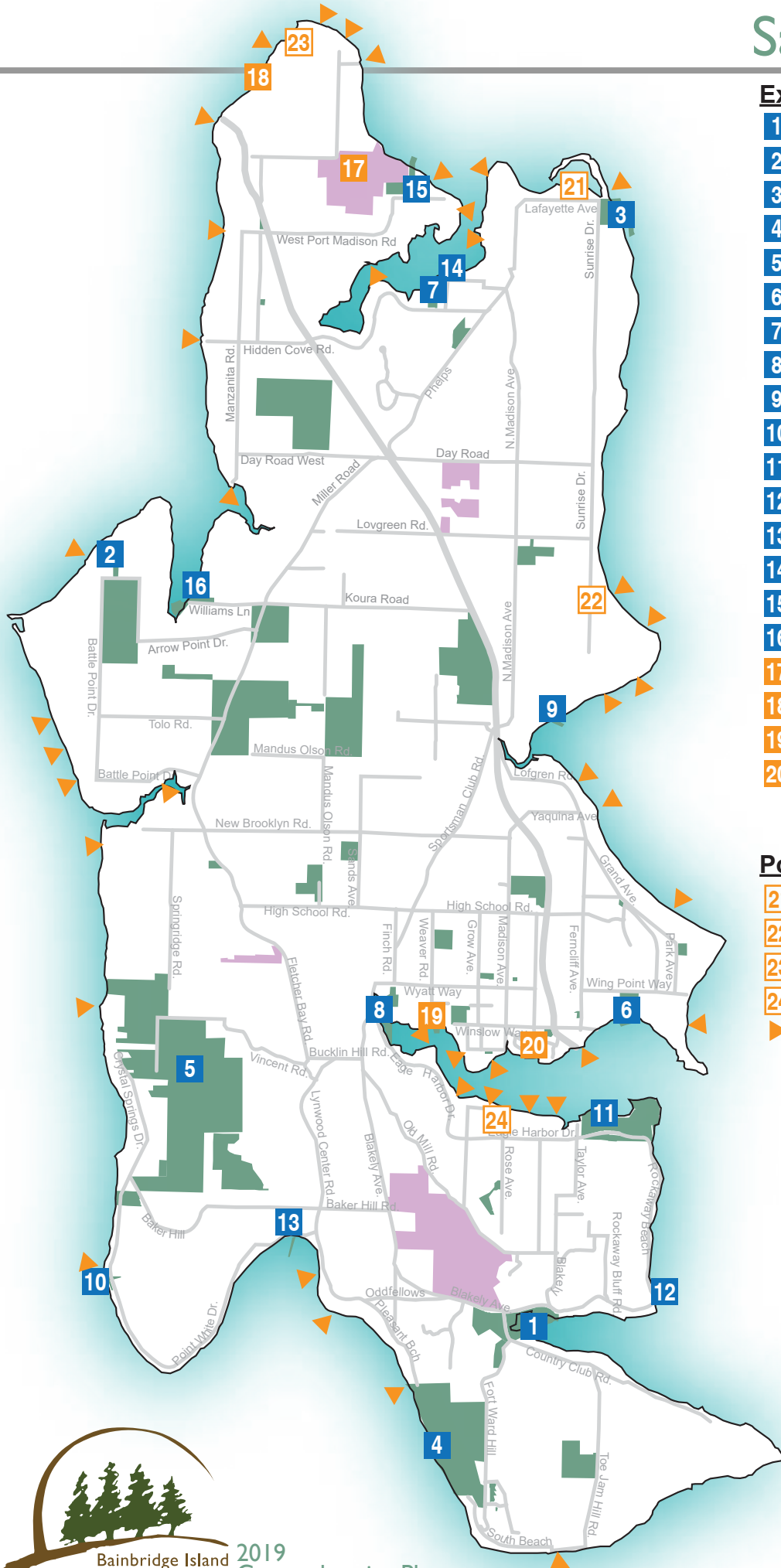
Salt Water Access

Existing Salt Water Access

- 1 Blakely Harbor
- 2 Fairy Dell Trail
- 3 Fay Bainbridge Park
- 4 Fort Ward Park
- 5 Gazzam Lake Park
- 6 Hawley Cove Park
- 7 Hidden Cove Park
- 8 Lumpkin
- 9 Manitou Beach
- 10 Point White Pier
- 11 Pritchard Park (co-owned COBI)
- 12 Rockaway Beach Park
- 13 Schel Chelb
- 14 T'Chookwap Park
- 15 W. Port Madison Nature Preserve
- 16 Williams-Olson Park
- 17 Bloedel Reserve
- 18 Puget Sound Energy
- 19 Strawberry Plant Park
- 20 Waterfront Park

Potential Salt Water Access

- 21 Lafayette Avenue
- 22 Mountain View Road
- 23 Sanwick Street
- 24 Ward Avenue
- ▶ Other Road End Access



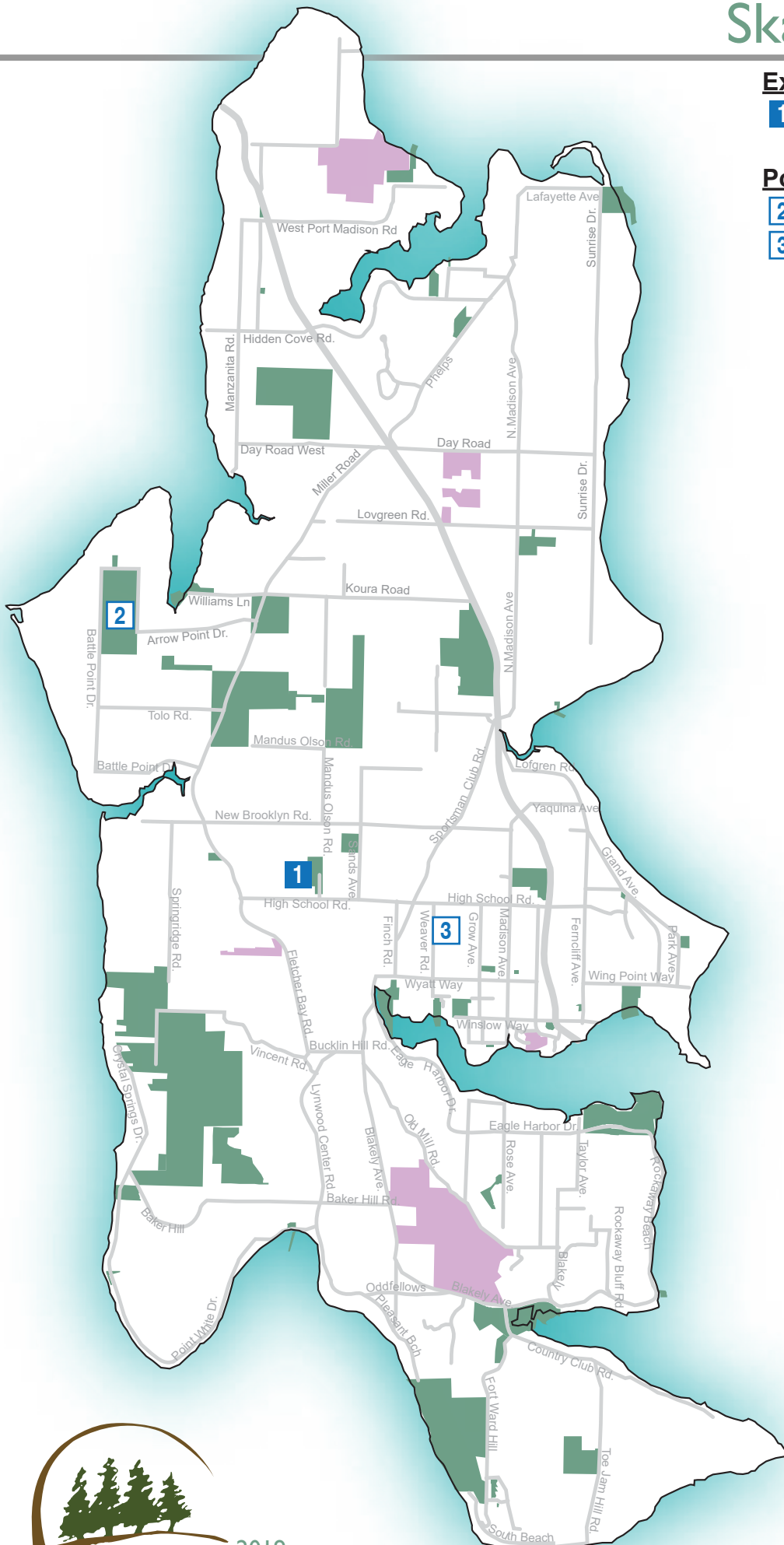
Skatepark Facilities

Existing Skatepark Facilities

- 1** Strawberry Hill Park

Potential Skatepark Facilities

- 2** Battle Point Park
3 Rotary Park



Swim/Scuba/Aquatic Facilities

Existing Scuba Diving Sites

- 1** Blakely Harbor Park
- 2** Fay Bainbridge Park
- 3** Rockaway Beach
- 4** Fort Ward Park
- 5** Manitou Beach

Existing Swimming Beaches

- 6** Blakely Harbor Park
- 7** Fay Bainbridge Park
- 8** Fort Ward Park
- 9** Hidden Cove Park Dock
- 10** Pt. White Pier
- 11** Hawley Cove Park
- 12** Pritchard Park
- 13** Williams-Olson Park
- 14** Waterfront Park

Existing Outdoor Swimming Pools

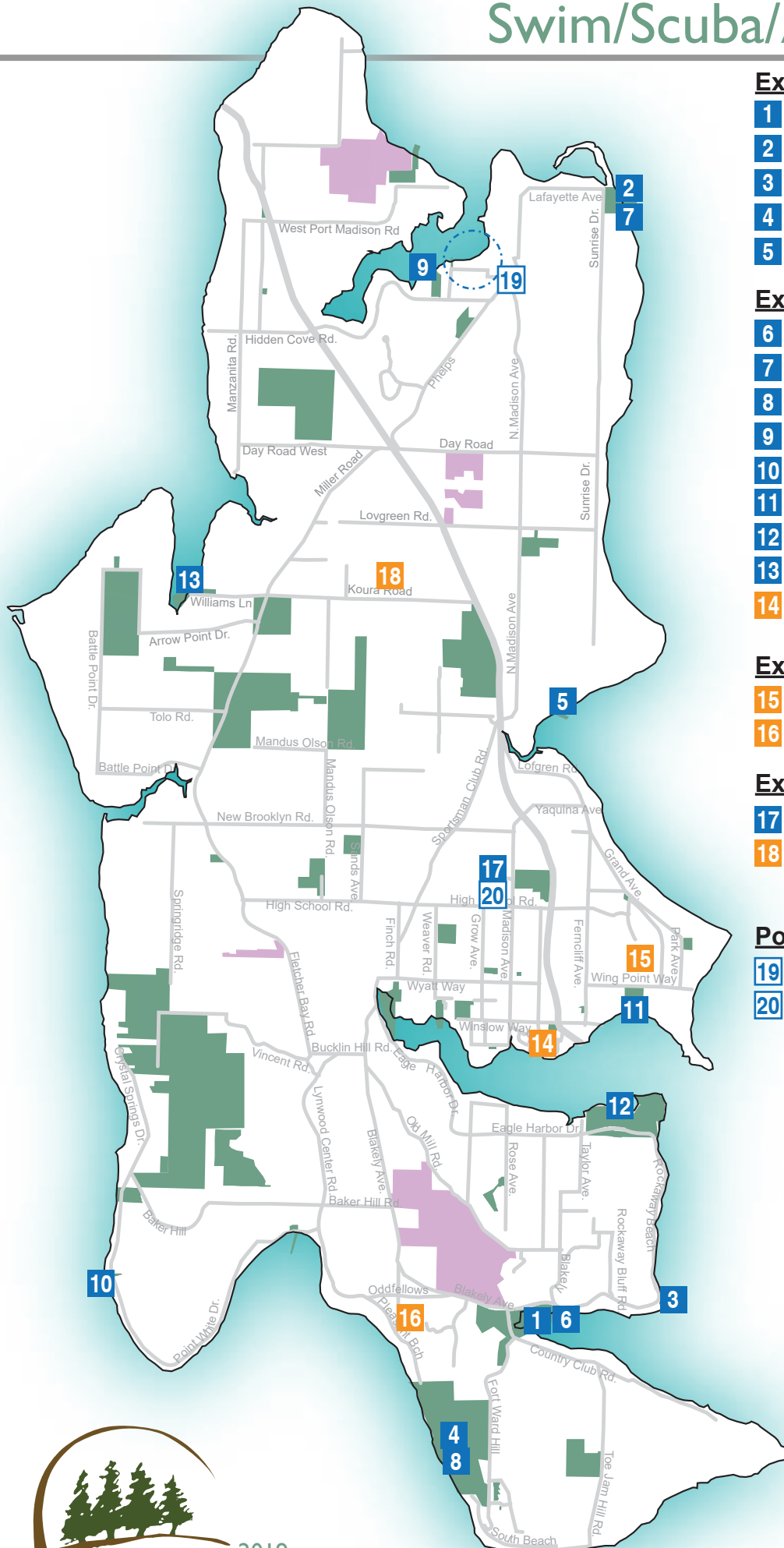
- 15** Wing Point Country Club
- 16** Pleasant Beach Village Pool

Existing Indoor Swimming Pools

- 17** Aquatic Center
- 18** Bainbridge Athletic Club

Potential Swim/Water Access Facilities

- 19** Small Craft Facility
- 20** Replace Ray Williamson Pool at Aquatic Center



Chapter 5: Indoor Facility Features

DRAFT 11/04/19 (subsequent review)

		Gym/Fitness Facility	Mtg/Classrm/Arts/Aud	Restroom	Seasonal Toilet	Support Facility
	<u>BIMPRD Parks & Properties</u>					
1	Aaron Avenue Tot Lot					
2	Aquatic Center (BISD)		X	X		X
3	Battle Point Park/Fairy Dell	X		X		X
4	Blakely Harbor Park			X	X	
5	Camp Yeomalt		X	X		
6	Cave Heritage Park					
7	Eagledale Park		X	X		
8	Fay Bainbridge Park			X	X	X
9	Fort Ward Historic Bakery (SD#7)		X	X		
10	Fort Ward Parade Grounds					
11	Fort Ward Park			X		
12	Gazzam Lake Properties			X		
13	Gideon Park					X
14	Grand Forest (part BISD)					
15	Hawley Cove Park					
16	Hidden Cove Ballfields				X	
17	Hidden Cove Park			X		
18	Hilltop (incl Prue's House)		X	X		X
19	Island Center Hall		X	X		
20	John Nelson Linear Trail					
21	Lumpkin					
22	Madison Avenue Tot Lot					
23	Manitou Beach Tidelands/Uplands					
24	Manzanita Park					
25	Meigs Park (1st & 2nd acquisitions)					X
26	Moritani Preserve					
27	Nute's Pond					
28	Point White Pier				X	
29	Pritchard Park (jt owned w/COBI)				X	
30	Red Pine Park				X	
31	Rockaway Beach					
32	Rotary Centennial Park (WSDOT)			X		
33	Rotary Park		X	X		
34	Sakai Park					
35	Sands Avenue Ballfield (BISD)				X	X
36	Schel Chelb Park			X		
37	Seabold Hall		X	X		
38	Strawberry Hill Park	X	X	X		X
39	T'Chookwap Park					
40	Ted Olson Nature Preserve					
41	Waypoint (COBI)					
42	Waypoint Woods (WSF)					

		Gym/Fitness Facility	Mtg/Classrm/Arts/Aud	Restroom	Seasonal Toilet	Support Facility
43	West Port Madison Nature Preserve					
44	Williams-Olson Park				X	
45	Yama Property at Blakely Harb Prk					
	<u>City of BI Properties</u>					
1	City Hall		X			
2	Waterfront Park Community Center		X			
	<u>BI School District Properties</u>					
1	Bainbridge High Sch	X	X			
2	Blakely Elementary Sch	X				
3	Commodore Options Sch	X				
4	Grand Forest East (NW Corner)					
5	Ordway Elementary Sch	X				
6	Sonoji Sakai Intermediate Sch	X				
7	Wilkes Elementary Sch	X				
8	Woodward Middle Sch	X				
	<u>Other Organization Ownerships</u>					
1	Bainbr Performg Arts Cultural Cntr		X			
2	BI Art Museum		X			
3	BI Historical Museum		X			
4	BARN Community Center		X			
5	Hall's Hill Park					
	<u>Other Public Ownerships</u>					
1	Fire Station 21 (Madison)		X			
2	Fire Station 22 (Bucklin Hill)		X			
3	Fire Station 23 (Phelps)		X			
4	Kitsap Regional Library		X			
	<u>Non-Profit Properties</u>					
1	Bloedel Reserve					
2	IslandWood					

		Gym/Fitness Facility	Mtg/Classrm/Arts/Aud	Restroom	Seasonal Toilet	Support Facility
	Private Facilities					
1	American Legion Hall		X			
2	Bainbridge Athletic Club/Pool	X				
3	Bainbridge Dance Center					
4	BI Filipino-American Hall		X			
5	BI Grange Hall		X			
6	BI Sportsman Club		X			
7	Lynwood Commons		X			
8	Hyla Middle School					
9	Island Fitness	X				
10	Island School					
11	Lynwood Theater		X			
12	Pleasant Beach Village Pool & Fitness	X				
13	St Cecilia Catholic Church					
Grand Total		12	26	17	7	8

Column descriptions:

Gym/Fitness Facility: park facilities, school gyms, & established fitness centers

Mtg/Classrm/Arts/Aud: park facilities, public agencies excluding school mtg rms due to closed campus restrictions, & established public venues

Restroom: park facilities only

Seasonal toilet: portable toilets in parks

Support facilities: park facilities only such as offices, storage, maintenance

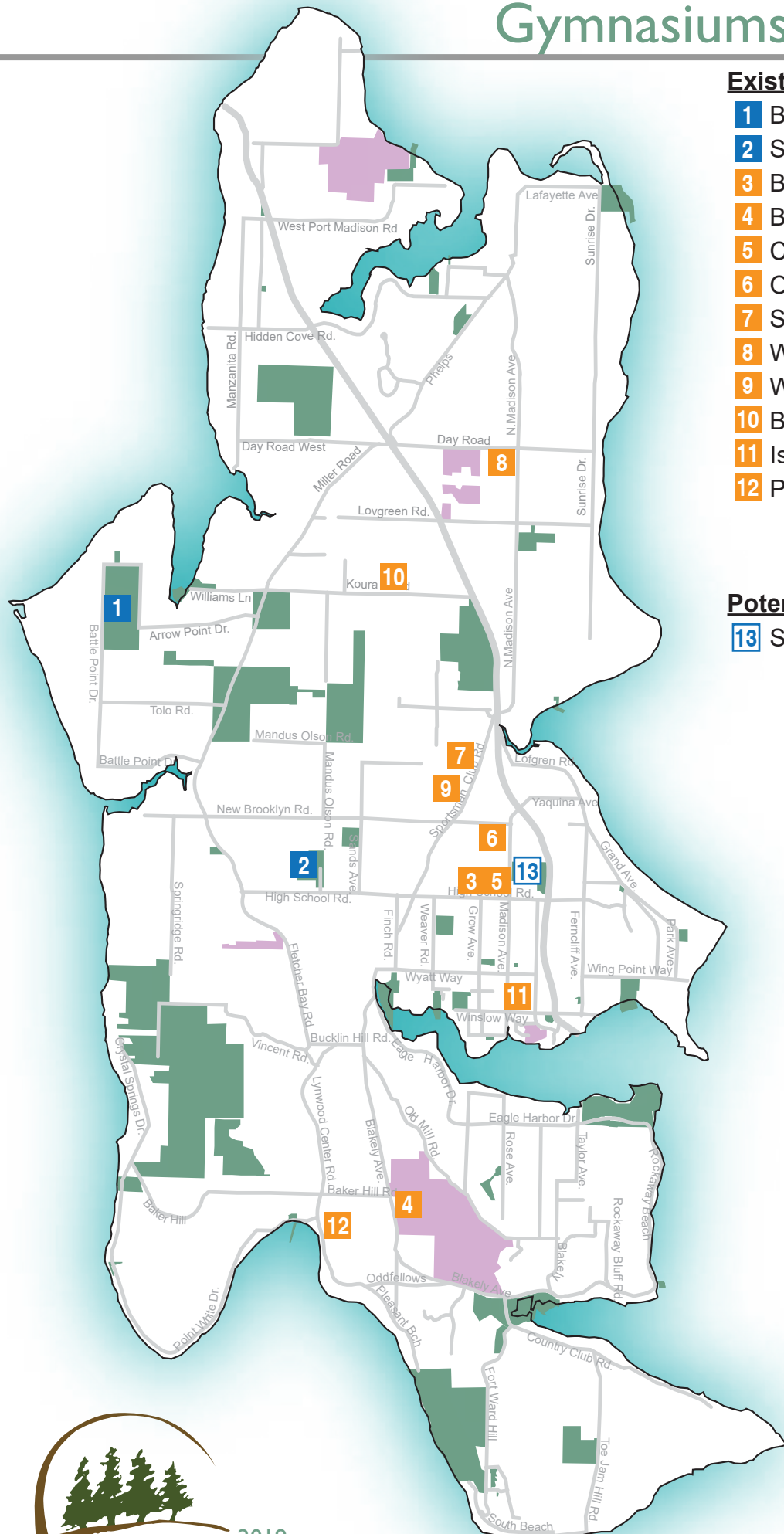
Gymnasiums/Fitness Facilities

Existing Gyms/Fitness Facilities

- 1 Battle Point Park
- 2 Strawberry Hill Park - Mini Gym
- 3 Bainbridge High School
- 4 Blakely Elementary
- 5 Commodore Options School
- 6 Ordway Elementary
- 7 Sonoji Sakai Intermediate School
- 8 Wilkes Elementary
- 9 Woodward Middle School
- 10 Bainbridge Athletic Club
- 11 Island Fitness
- 12 Pleasant Beach Village Pool & Fitness

Potential Gyms/Fitness Facilities

- 13** Sakai Park



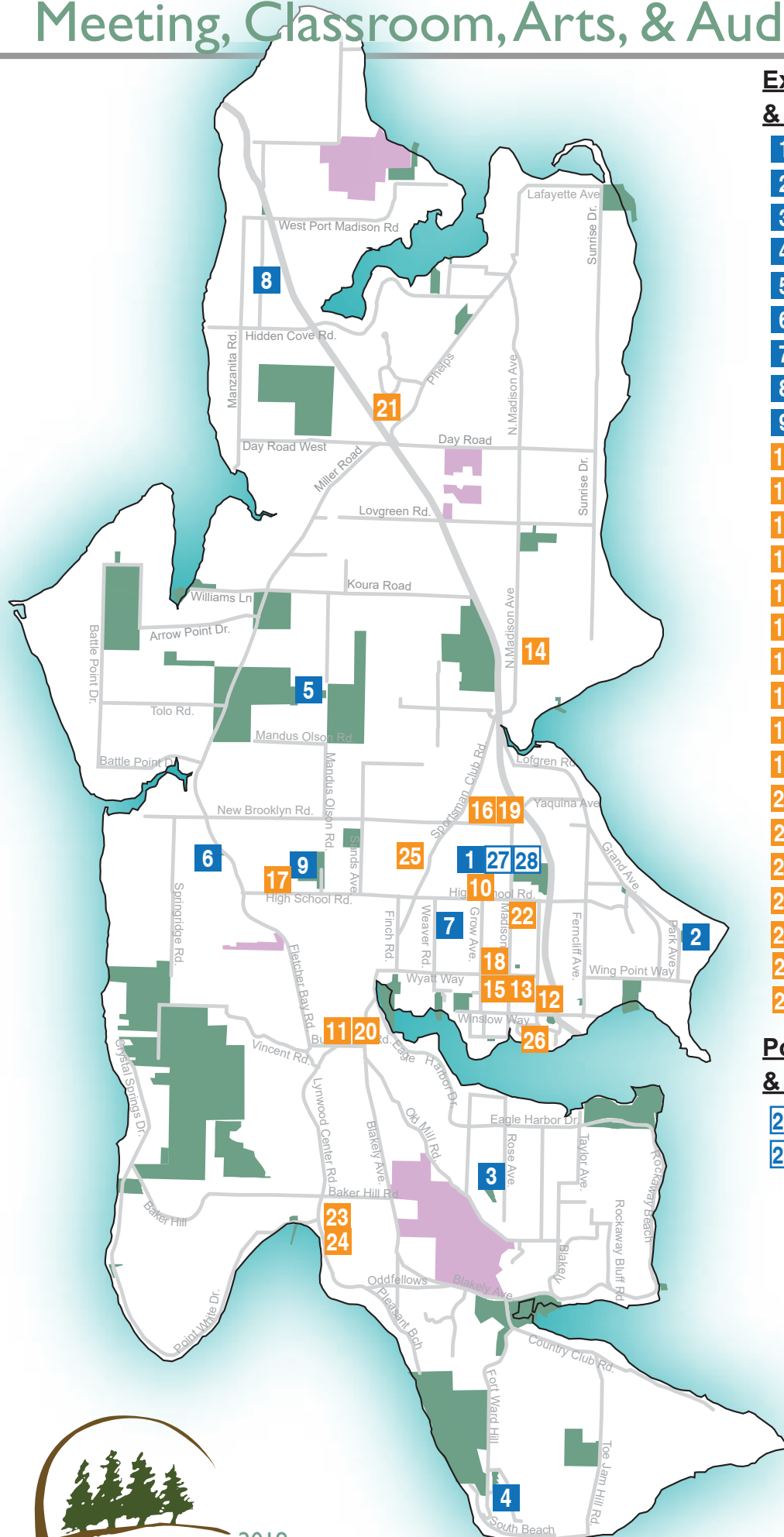
Meeting, Classroom, Arts, & Auditorium Facilities

Existing Meeting, Classroom, Arts, & Auditorium Facilities

- 1** Aquatic Center
- 2** Camp Yeomalt
- 3** Eaglesdale Park
- 4** Fort Ward Historic Bakery
- 5** Prue's House at Hilltop
- 6** Island Center Hall
- 7** Rotary Park
- 8** Seabold Hall
- 9** Strawberry Hill Park
- 10** Bainbridge High School
- 11** American Legion Hall
- 12** Bainbridge Art Museum
- 13** Bainbridge Island Historical Museum
- 14** Bainbridge Island Grange Hall
- 15** Bainbridge Performing Arts
- 16** BARN Community Center
- 17** BI Filipino American Hall
- 18** COBI City Hall
- 19** Fire Station 21 (Madison)
- 20** Fire Station 22 (Bucklin Hill)
- 21** Fire Station 23 (Phelps)
- 22** Kitsap Regional Library
- 23** Lynwood Commons
- 24** Lynwood Theater
- 25** Sportsmens Club
- 26** Waterfront Park Community Ctr

Potential Meeting, Classroom, Arts, & Auditorium Facilities

- 27** Aquatic Center
- 28** Sakai Park



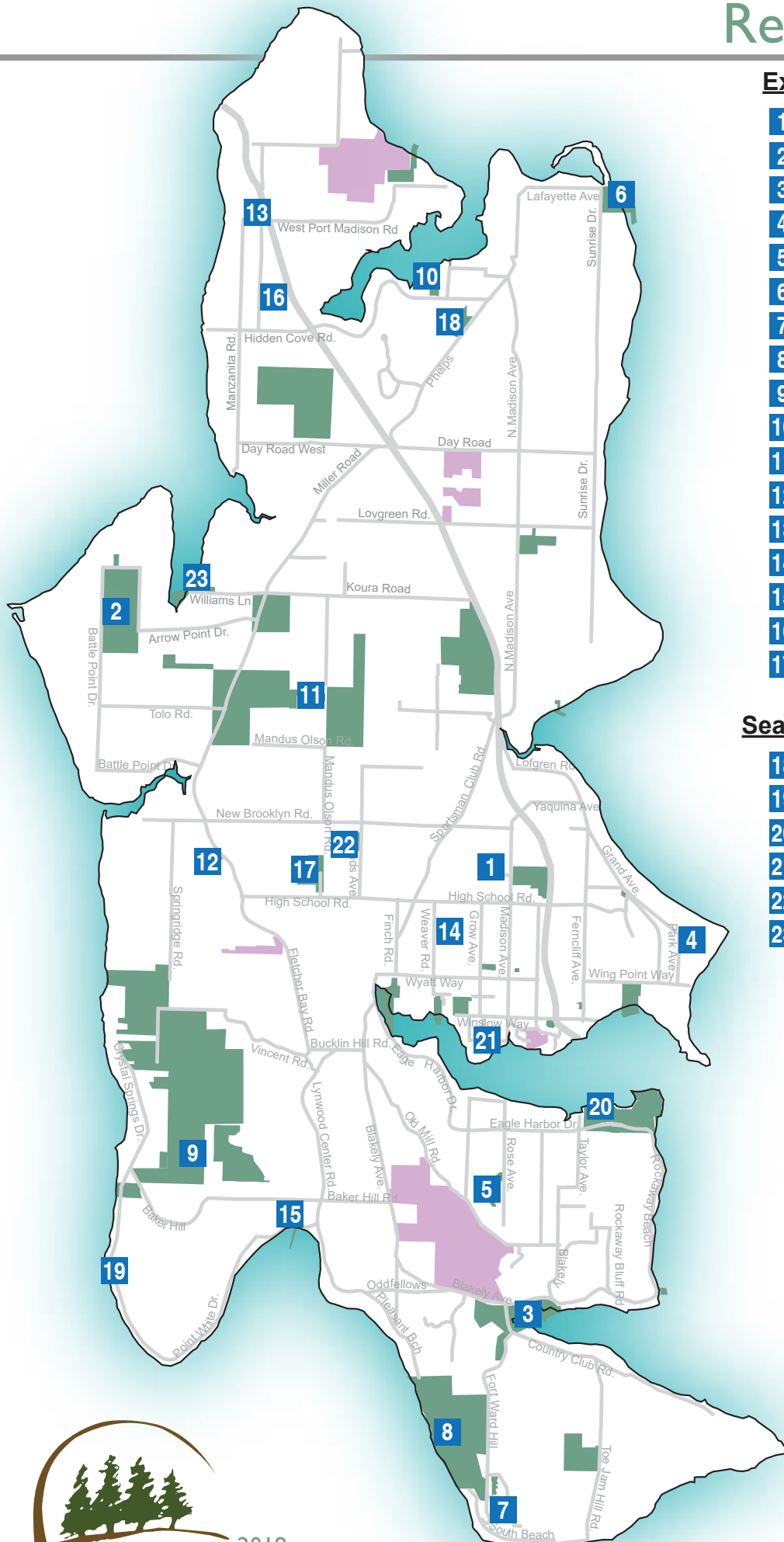
Restroom Facilities

Existing Restroom Facilities

- 1** Aquatic Center
- 2** Battle Point Park
- 3** Blakely Harbor Park
- 4** Camp Yeomalt
- 5** Eagledale Park
- 6** Fay Bainbridge Park
- 7** Fort Ward Historic Bakery
- 8** Fort Ward Park
- 9** Gazzam Lake Nature Preserve
- 10** Hidden Cove Park
- 11** Hilltop/Prue's House
- 12** Island Center Hall
- 13** Rotary Centennial Park
- 14** Rotary Park
- 15** Schel Chelb Park
- 16** Seabold Hall
- 17** Strawberry Hill Park

Seasonal/Portable Restroom Facilities

- 18** Hidden Cove Ballfields
- 19** Point White Pier
- 20** Pritchard Park
- 21** Red Pine Park
- 22** Sands Ave Ballfield
- 23** Williams Olson Park



Support Facilities

Existing Support Facilities

- 1** Aquatic Center
- 2** Battle Point Park
- 3** Fay Bainbridge Park
- 4** Gideon Park
- 5** Hilltop
- 6** Meigs Park
- 7** Sands Avenue Ballfields
- 8** Strawberry Hill Park

Potential Support Facilities

- 9** Sakai Park

