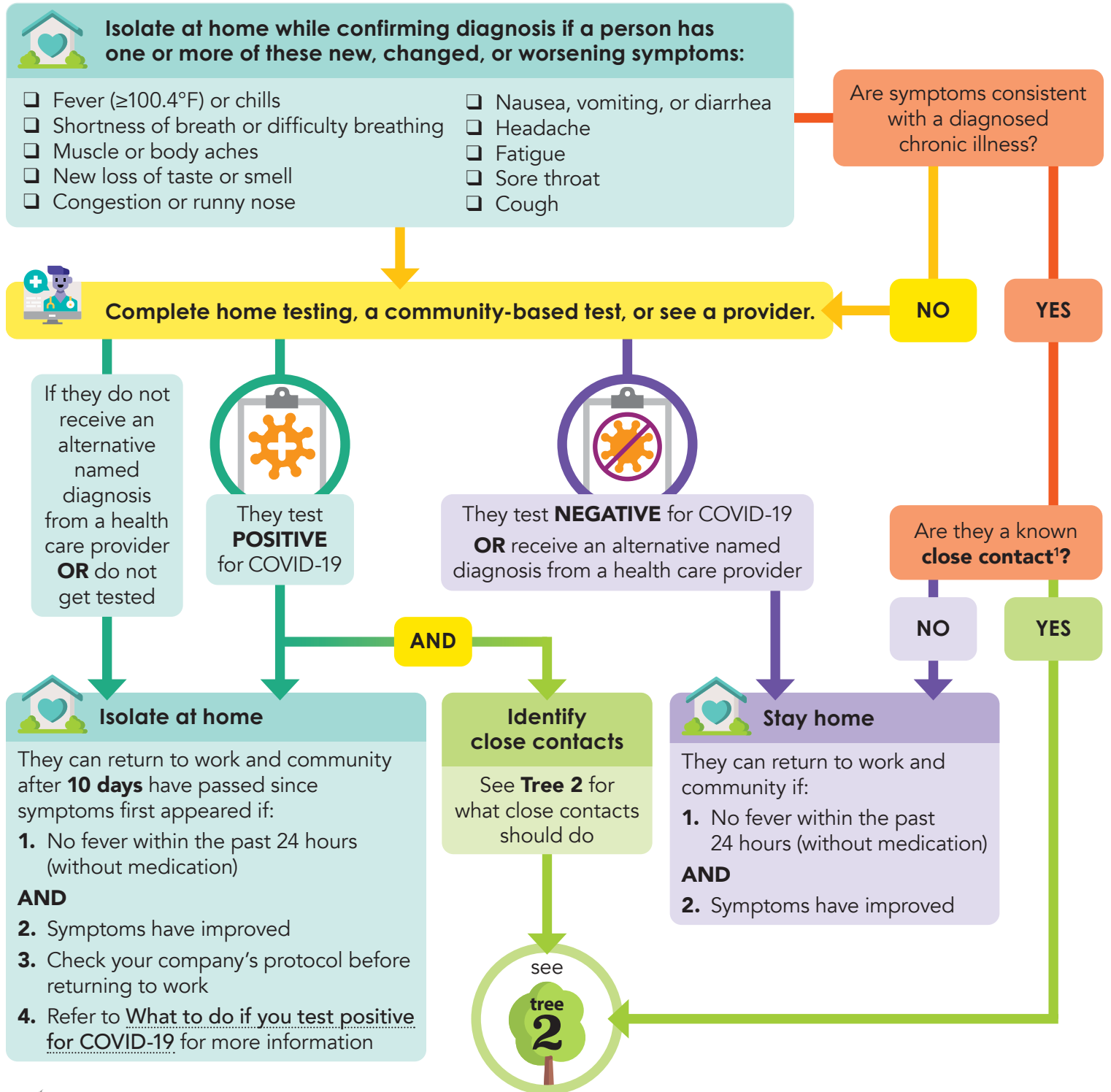


What to do if a Person is Symptomatic



These recommendations are for non-health care settings not including schools. For K-12 schools information, see the [Symptom Decision Tree and Contact Tracing Checklist for K-12 Schools](#).



DOH 820-234 December 14, 2021

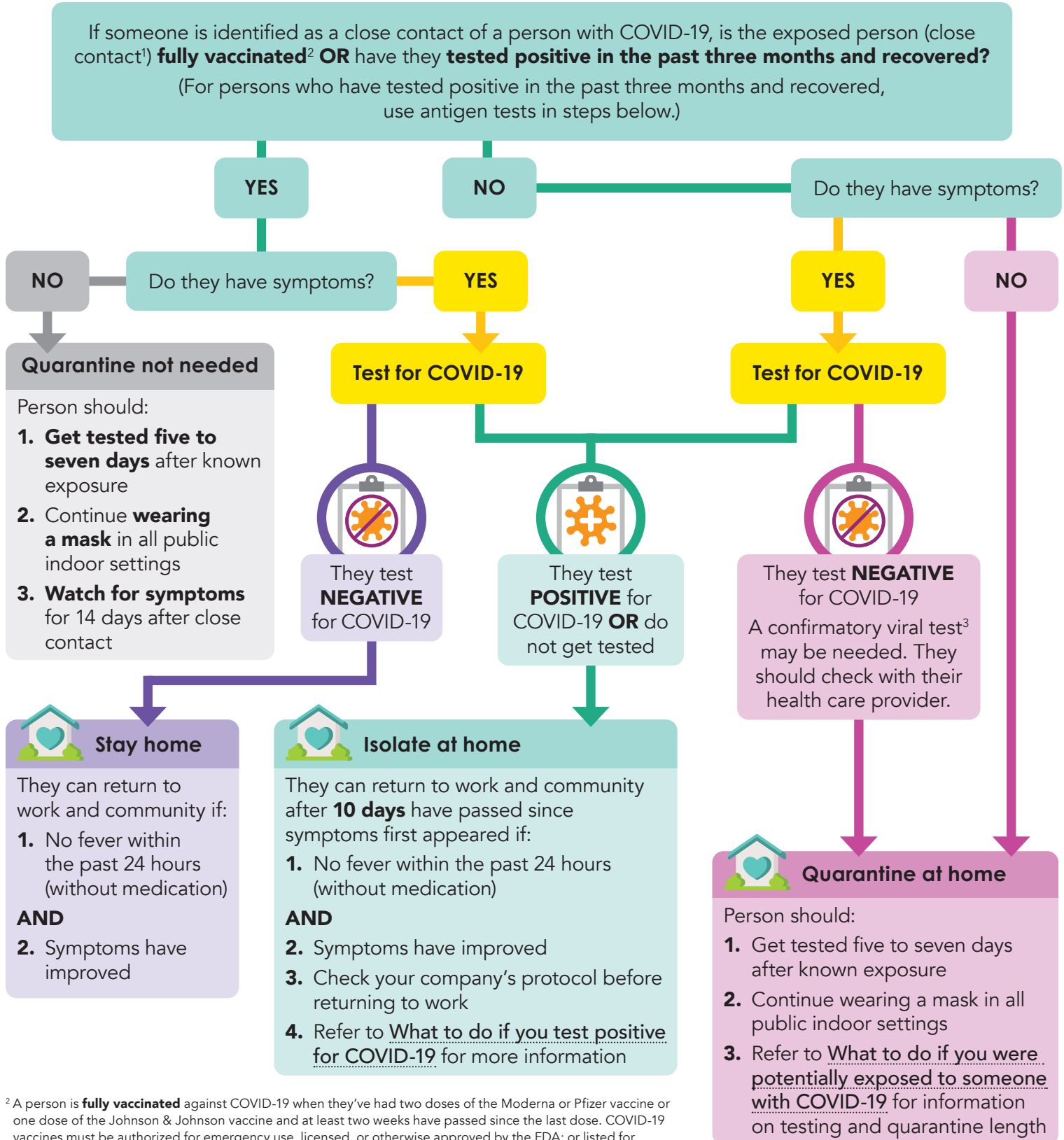
To request this document in another format, call 1-800-525-0127.
Deaf or hard of hearing customers, please call 711 (Washington Relay) or email civil.rights@doh.wa.gov.

¹ **Close contact:** Someone who was within 6 feet of a COVID-19 case(s) for a total of 15 minutes or more within 24 hours during the case's contagious period. Please see the COVID-19 Contact Tracing Guide for additional information. The definition of a close contact may vary in some situations. The local health department makes the ultimate determination of a close contact during its investigation, but may delegate this decision if appropriate.

Identify and Care for Close Contacts



These recommendations are for non-health care settings not including schools. For K-12 schools information, see the [Symptom Decision Tree and Contact Tracing Checklist for K-12 Schools](#).



² A person is **fully vaccinated** against COVID-19 when they've had two doses of the Moderna or Pfizer vaccine or one dose of the Johnson & Johnson vaccine and at least two weeks have passed since the last dose. COVID-19 vaccines must be authorized for emergency use, licensed, or otherwise approved by the FDA; or listed for emergency use or otherwise approved by the World Health Organization.

³ Confirmatory viral test may be a NAAT or an additional antigen test.