



Ft Ward Play Area

Project Review

- ▶ Reminder
 - ▶ Identified in Comp Plan, (Chapter 5, Park Exhibits, page 115, 156) as a “future potential improvement”
 - ▶ Lack of Public Play Area in vicinity

Project Review

- ▶ Board introduction on July 21, 2022
 - ▶ Goal of project is to provide neighborhood access to a walkable play structure
 - ▶ Request received from original Ft Ward Neighborhood association
 - ▶ Description of restrictions/conditions on Parade Ground
 - ▶ Introductions of possible locations for a playground
 - ▶ Community comments taken

Outcome

- ▶ Board request for community to discuss and report back

Project Review

- ▶ Community update on Sept 15, 2022
 - ▶ Survey conducted by neighborhood
 - ▶ Solid support for playground in the area
 - ▶ Parade Grounds appeared to be the first choice
 - ▶ Report on Community meeting held at the Bakery to gather input
 - ▶ Support for a playground in area
 - ▶ Less consensus on a location/some felt the upper Ft Ward lot was chosen that day

Project Review

- ▶ Project Update on November 3, 2022
 - ▶ Overview of process to date
 - ▶ Pros and Cons of Sites 1 through 4
 - ▶ More public comment

Project Review



Board meeting comments

Citizens have continued to attend Board meetings to provide input



Emails/letters/phone conversations

The Board and staff have continued to receive a large number of comments through a variety of communications

General Conclusions

Opposition

Worried
about:

Increased traffic/limited parking

Increased noise

Crime/loitering

Decreased property values

Having it in their back yard

Added since last update – Not consistent with Historic Designation (covered later in presentation)

Proponents

Feel it
will:

Provide a place to take children/grandchildren in the neighborhood

Provide a place to socialize with neighbors

Provide recreation options that don't require driving to

Could make the area more welcoming to families and children

Location Discussion

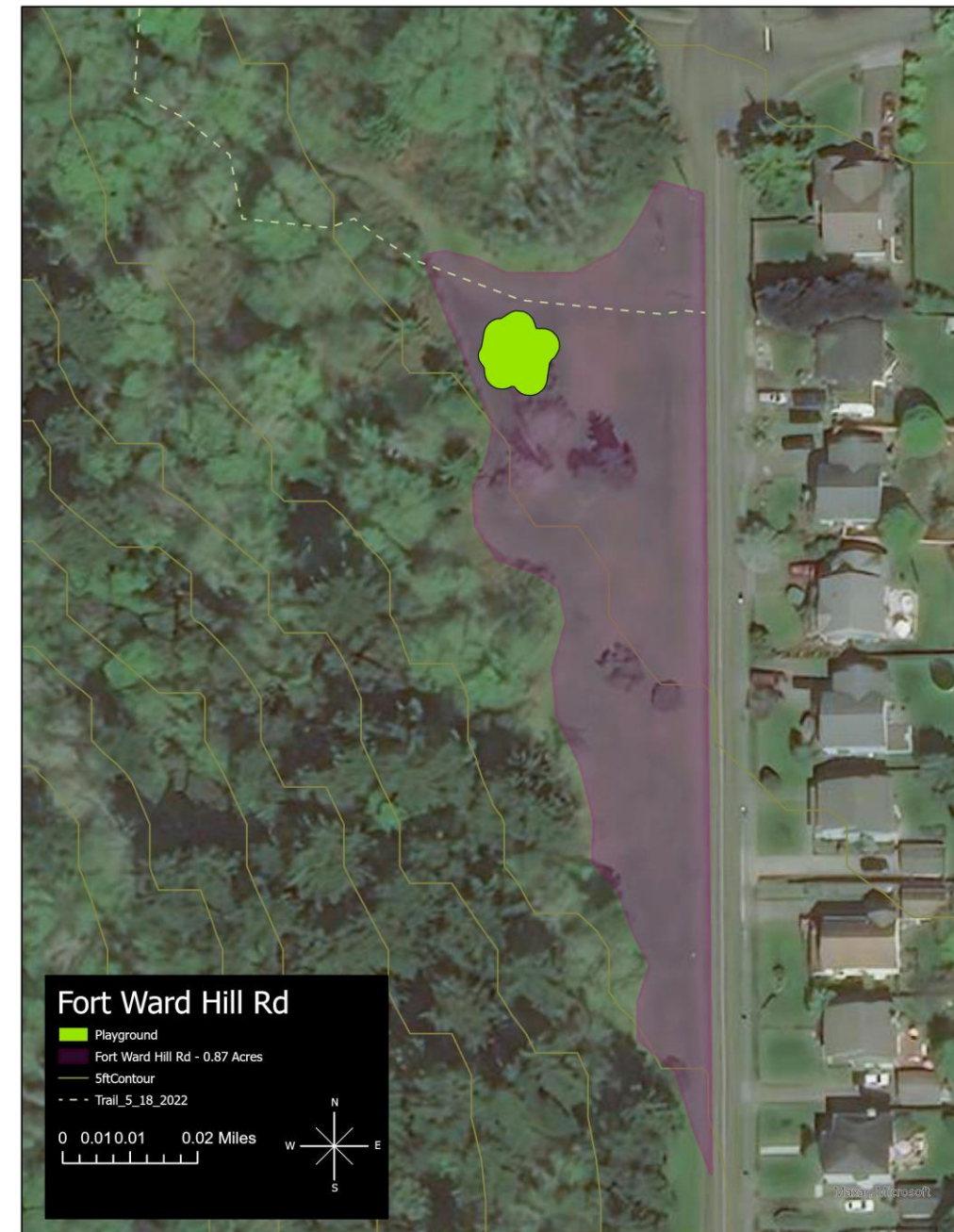


Siting considerations

- ▶ Safety
- ▶ Accessibility
- ▶ Privacy
- ▶ Proximity to homes

Site 1

- ▶ Pros
 - ▶ Most neutral of original sites proposed
 - ▶ Near trail to Ft Ward Trail system
 - ▶ Less impact to residences
 - ▶ Large enough space for structure
- ▶ Cons
 - ▶ Proximity to street
 - ▶ Street crossing concerns (COBI willing to consider street calming measures)
 - ▶ Fencing would be recommended



Parade Grounds

- ▶ Pros
 - ▶ Close to residences and children
 - ▶ Large enough
 - ▶ Protected from Roads
 - ▶ Already established use for children's play
- ▶ Cons
 - ▶ Close to residences
 - ▶ Concern regarding National Historic significance



Site 2 Options A, C, D





Site 3

► Pros

- No restrictions or conditions
- Large enough

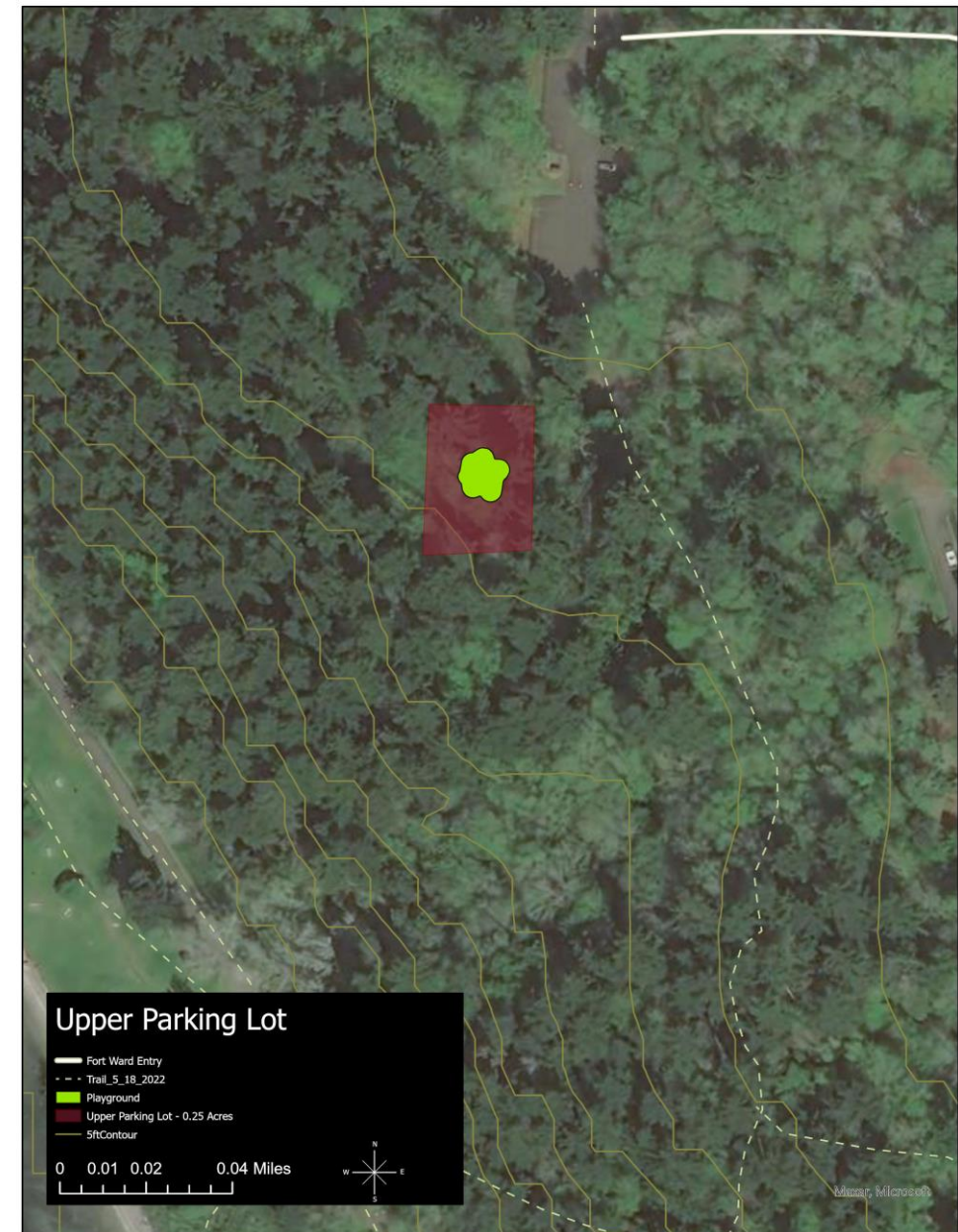
► Cons

- Inequitable impact to just 1 residence
 - Seems to be consensus with eliminating consideration of this location
- Proximity to road would create recommendation for fencing



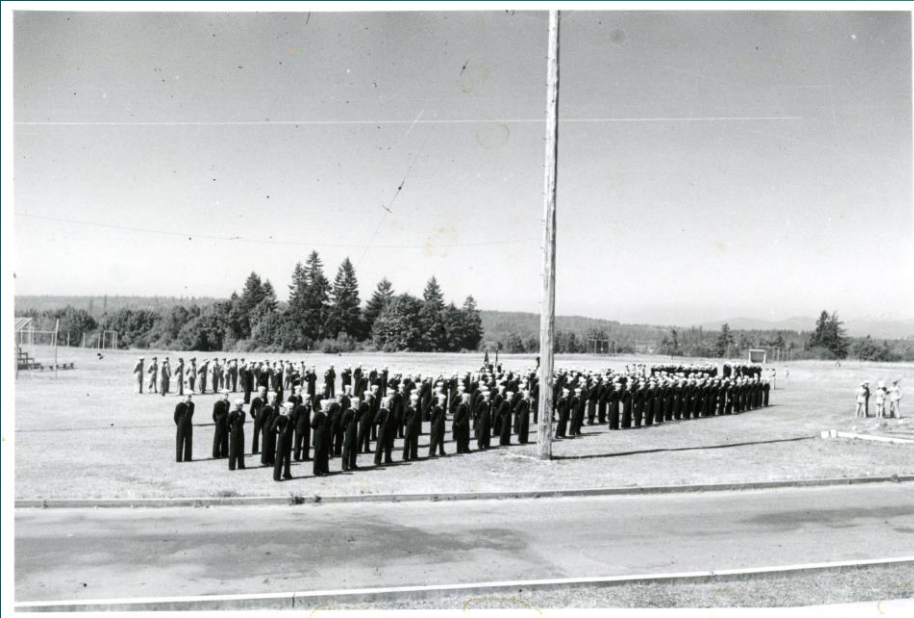
Site 4

- ▶ Pros
 - ▶ No restrictions or conditions
 - ▶ Restrooms and parking available
 - ▶ Little to No impact to residences
- ▶ Cons
 - ▶ Same concerns regarding roadway as Site 1
 - ▶ Wetland and buffer to the east
 - ▶ Steep slope to the west
 - ▶ Furthest from kids and other potential users
 - ▶ Tree limbs pose potential hazard
 - ▶ Security concerns
 - ▶ No homes nearby

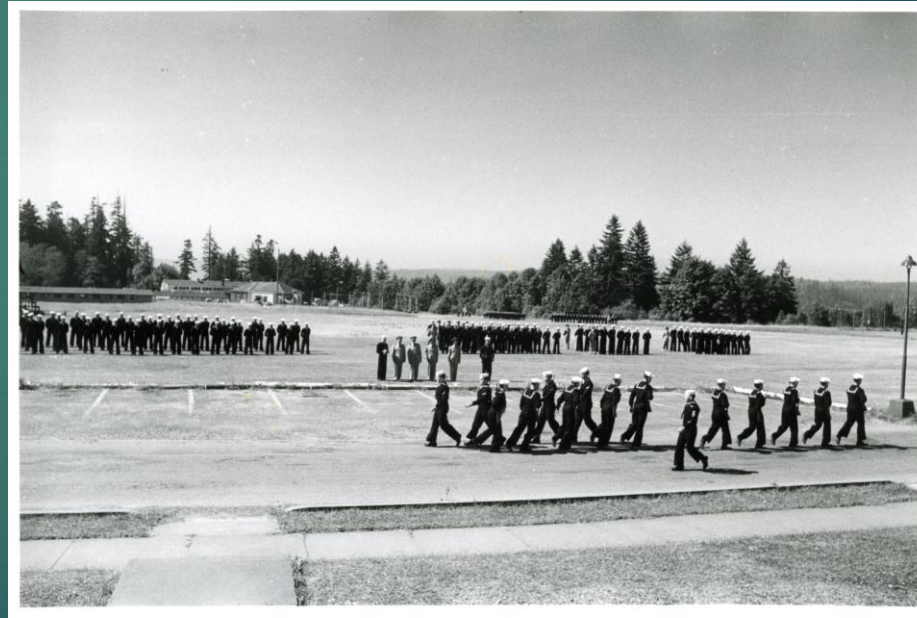


Parade Grounds

Recreation activities in
background



Parking area in foreground



Appropriate Use?

Baseball





Other National Historic sites

Fort Stevens (official activities moved to Bainbridge from Fort Stevens)

Current uses at Fort Stevens

Camping

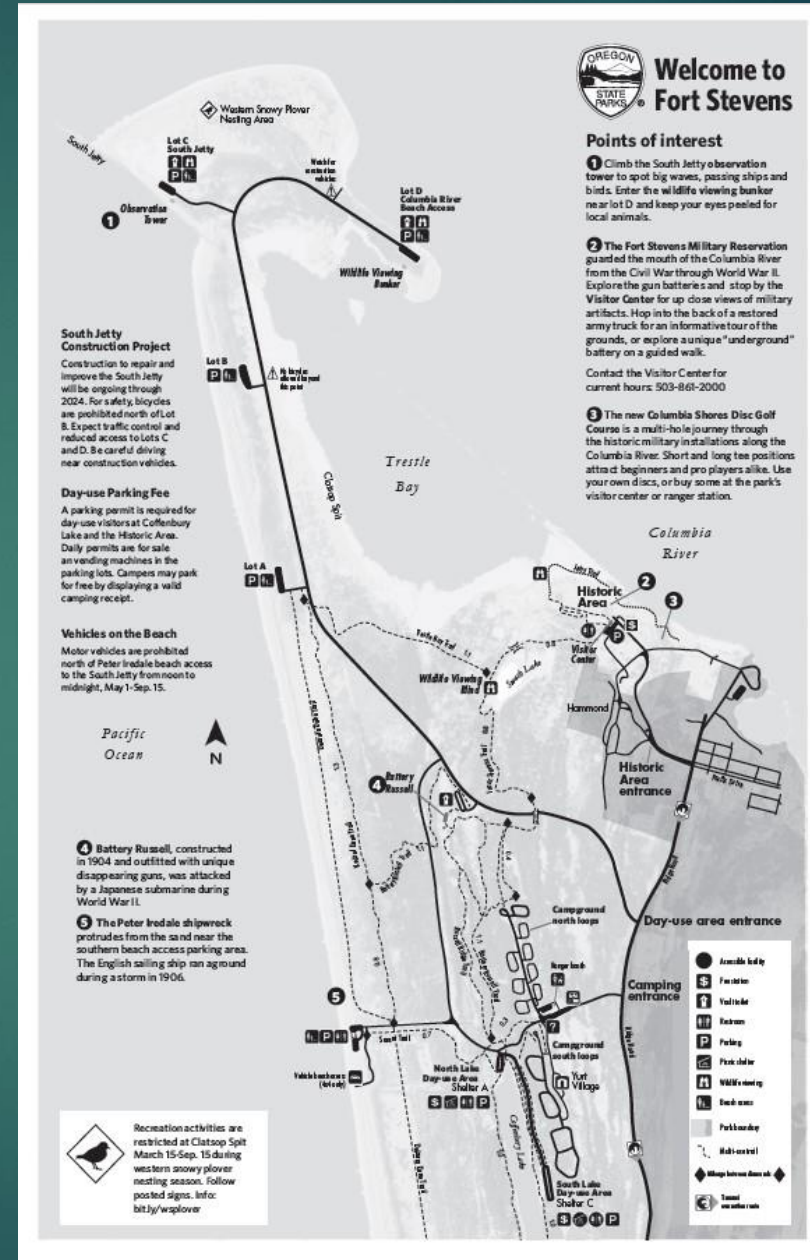
Recreation

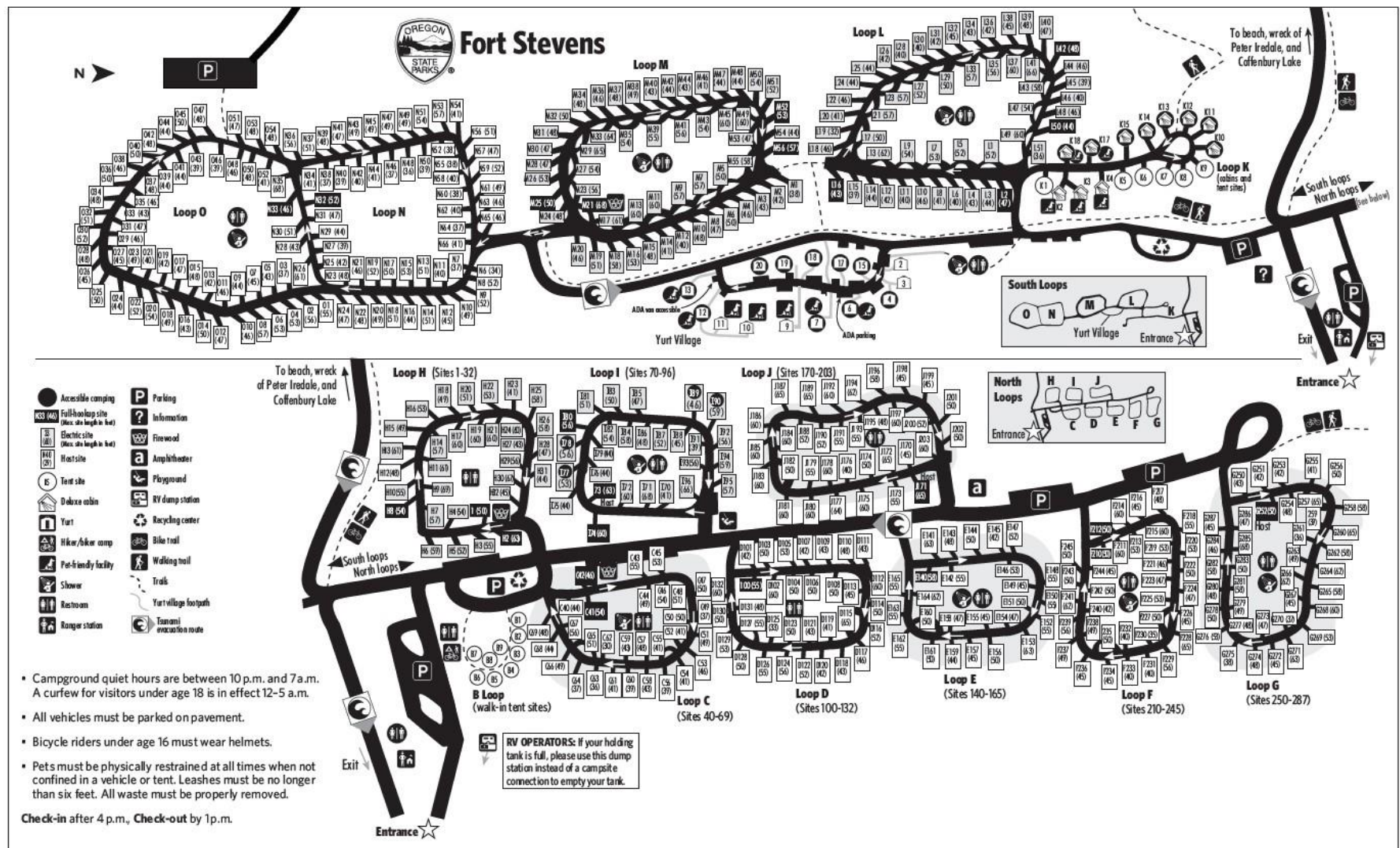
Historic Sites

Trails

Public access

Interpretation





Park amenities and facilities

Fort Flagler Historical State Park offers several amenities and facilities to make your visit more enjoyable and comfortable, including:

- A group picnic shelter with a power outlet and water. Reservable online at www.parks.state.wa.us or by calling (888) CAMPOUT or (888) 226-7688.
- Picnic tables, some with fire rings, are available throughout the park on a first come, first-served basis.
- Two watercraft launches, 256 feet of moorage dock and seven moorage buoys. Docks are removed between Sept. 30 and March 15. Watercraft launch and moorage fees are in effect year round from 1 p.m. to 8 a.m.
- Museum with gift shop and park store are open on a seasonal schedule.
- 2 miles of beach trail, 6 miles of wooded trail and a short interpretive trail.
- Restrooms, some with token-operated showers.

The Discover Pass is required for day visits to state parks and access to other state-managed recreation lands. The pass provides access to millions of acres of parks, wildlife areas, trails, natural areas and water-access sites. The annual pass is transferable between two vehicles.

• Annual pass: \$30 • One-day pass: \$10 (transaction and dealer fees may apply)

The Discover Pass can be purchased online, by phone or in person. For details, visit www.discoverpass.wa.gov or call (866) 320-9933.

Thank you for supporting Washington state recreation lands.



Things to remember

- Park hours – April 1 to Oct. 31, 6:30 a.m. to dusk.
- Winter schedule – Nov. 1 to March 31, 8 a.m. to dusk. For a winter schedule and information about seasonal closures, visit www.parks.state.wa.us or call the information center at (360) 902-8844.
- The upper campground is open May 1 to Sept. 30.
- Moorage fees are charged year round for mooring at docks, floats and buoys from 1 p.m. to 8 a.m.
- Wildlife, plants and all park buildings, signs, tables and other structures are protected; removal or damage of any kind is prohibited. Hunting, feeding of wildlife and gathering firewood on state park property is prohibited.
- One camping party is allowed per site. Maximum of eight people per campsite.
- Campsites may not be held for other parties.
- Camping check-in time is 2:30 p.m., and check-out time is 1 p.m.
- Extra vehicle overnight - \$10 per night in designated area for each vehicle in excess of the one allowed per site. Does not apply to vehicle towed by a recreational vehicle.
- Pets must be on leash and under physical control at all times. This includes trail areas and campsites. Pet owners must clean up after pets on all state park lands.
- Quiet hours are 10 p.m. to 6:30 a.m.
- Engine-driven electric generators may be operated only between the hours of 8 a.m. and 9 p.m.



Fort Flagler Historical State Park
10541 Flagler Road
Nordland, WA 98358
(360) 385-1259

State Parks Information:
(360) 902-8844

Reservations: Online at www.parks.state.wa.us or call (888) CAMPOUT or (888) 226-7688

Other state parks located in the general area:
Anderson Lake, Fort Worden, Mystery Bay, Kinney Point and Fort Townsend

Connect with us on social media

twitter: [www.twitter.com/WASatePks](https://twitter.com/WASatePks)
facebook: www.facebook.com/WashingtonStateParks
YouTube: www.youtube.com/WashingtonStateParks
Instagram: www.instagram.com/WASatePks

Share your stories and photos: AdventureAwaits.com

2020

If you would like to support Washington State Parks even more, please consider making a donation when renewing your license plate tabs. You also may place a check in a donation box when you visit state parks. Donations are a significant part of the State Parks budget and are needed to keep your parks open and operating. For more information, visit www.parks.state.wa.us/donations

Washington State Parks and Recreation Commission

P.O. Box 42650
Olympia, WA 98504-2650
(360) 902-8500
www.parks.state.wa.us

Commission members:

Ken Bounds Mark O. Brown
Sophia Danenberg Michael Latimer
Steve S. Milner Diana Perez
Lucinda S. Whaley
Agency director: Don Hoch

All Washington state parks are developed and maintained for the enjoyment of all people.

To request this brochure in an alternative format, please call (360) 902-8844 or the Washington Telecommunications Relay Service at (800) 833-6388. P&R 45-58000-01 (06/20)

Washington State Parks

FORT FLAGLER

Historical State Park



EMBRACE YOUR NATURE

www.parks.state.wa.us



Fort Flagler Historical State Park offers unparalleled views of the Olympic and Cascade mountains and the Puget Sound. This 1,469-acre camping park features 19,100 feet of saltwater shoreline which surrounds the park on three sides.

This historic fort features many of the original military buildings used at Fort Flagler during the 19th century. Batteries, dormitories, gun emplacements, non-commissioned officers' quarters and the hospital building are still main features of the park, and some are reservable for overnight stays and group events.

Fort Flagler features 2 miles of beach trail and 4 miles of wooded trails. Popular activities include visiting the museum, taking an interpretive tour of the historic hospital and gun batteries, fishing, hiking, paragliding, biking and kite flying.

Overnight accommodations Camping

The park offers several options for overnight stays. There are 59 standard sites, 55 full-hookup sites that accommodate RVs up to 50 feet long, two primitive campsites for hikers and bikers and one marine trail site. The upper campground has standard sites only that are suitable for tents and RVs up to 22 feet long. The lower campground area features standard and hookup sites with easy access to the beach. Fort Flagler also has two reservable primitive group camping facilities. Both include vault toilets, fire rings, picnic tables and a group shelter. The Scout Camp accommodates tents only, with a maximum capacity of 40 people. The Wagon Wheel Camp can accommodate both RVs and tents. Fees vary with group size.

Reservations for individual and group campsites may be made online at www.parks.state.wa.us or by calling (888) CAMPOUT or (888) 226-7688.

Vacation houses

Looking for more comfort? The park offers overnight guests the choice of five historic vacation houses within the park. All houses are furnished, some include bathrooms with claw-foot bathtubs and offer spacious kitchens with appliances and a TV/DVD. Guests need to bring their own bedding, pillows and towels.

Four of the homes are furnished reminiscent of the early 1900s, when they were built, and each can accommodate up to four guests. The remaining home, built in 1940, sleeps eight. All homes have commanding water views of Admiralty Inlet and Puget Sound. Reservations may be made online at www.parks.state.wa.us/vacationhouses or by calling (888) CAMPOUT or (888) 226-7688.

Retreat center

Fort Flagler is home to a retreat center featuring historic fort buildings. Altogether, the facilities can accommodate 275 people between three different camps (Camp Hoskins, Camp Richmond and Camp Wilson). Camp Hoskins consists of three dormitory buildings, a dining hall, kitchen and restrooms with shower. Camp Richmond has one dormitory building, a kitchen, dining area, restrooms and showers. Camp Wilson offers bunks, a small kitchen, restroom and showers. Each camp has different minimum and maximum capacities.

Reservations for retreat center facilities can be made by calling (360) 902-8600.

Park history

Fort Flagler, along with the heavy batteries of Fort Worden and Fort Casey, once guarded the nautical entrance to Puget Sound. These posts, established in the late 1890s, became the first line of a fortification system designed to prevent a hostile fleet from reaching such targets as the Bremerton Naval Yard and the cities of Seattle, Tacoma and Everett. Construction began in 1897 and continued in one form or another until the fort closed in 1953. The property was purchased as a state park in 1955. Fort Flagler is named after Brigadier General Daniel Webster Flagler.

Fort Ward Historic Recognition

- ▶ National Register (Listed 1996)

- ▶ *Under Federal Law, the listing of a property in the National Register places no restrictions on what a non-federal owner may do with their property up to and including destruction, unless the property is involved in a project that receives Federal assistance, usually funding or licensing/permitting.
- ▶ *There may be state or local preservation laws that a property owner should be aware of before they undertake a project with a historic property. We recommend you, or the property owner contact the State historic preservation office (SHPO) before an action with a listed property is taken. The SHPO is the state agency that oversees historic preservation efforts in their state.

*[National Register of Historic Places \(U.S. National Park Service\) \(nps.gov\)](https://www.nps.gov/nr/)

State Department of Historic Preservation response

- ▶ * “I am actually corresponding right now with Thomas Dildine about this, so I’ll cc him too. I do not think playground equipment is an adverse impact to the parade grounds for the built environment side. There is a new housing development along the western edge that is on old parade ground land, and that alone took away a lot of integrity for the parade ground to contribute to anything... and it’s just an open field with no features to identify it as a parade ground – I wouldn’t know what it was if I wasn’t here in this job looking into it.”

Holly Borth, M.S. | Built Environment Compliance & Survey Manager
360.890.0174 (c) | holly.borth@dahp.wa.gov
[she/her/hers]

Department of Archaeology & Historic Preservation | www.dahp.wa.gov
1110 Capitol Way S, Suite 30 | Olympia WA 98501
PO Box 48343 | Olympia WA 98504-8343

* email received from DAHP responding to question on appropriate use of parade grounds

Local Recognition

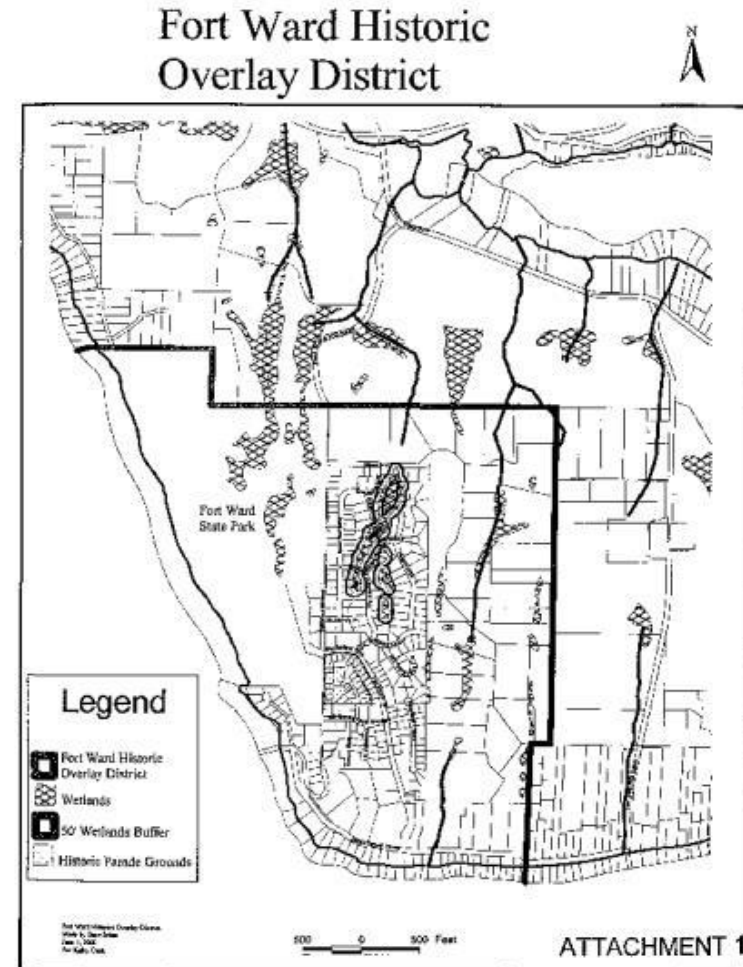
► * 18.24.110 Fort Ward historic overlay district.

The following regulations apply to the Fort Ward historic overlay district and supplement those general standards contained in BIMC 18.24.010 through 18.24.100. In the case of conflict between the provisions of this section and the provisions of previous sections of this chapter, the provisions of this section shall apply. Any applications for development within the Fort Ward historic overlay district not subject to the provisions of this section shall comply with the regulations for the underlying zone (R-2).

*[Chapter 18.24 HISTORIC PRESERVATION PROGRAM \(codepublishing.com\)](#)

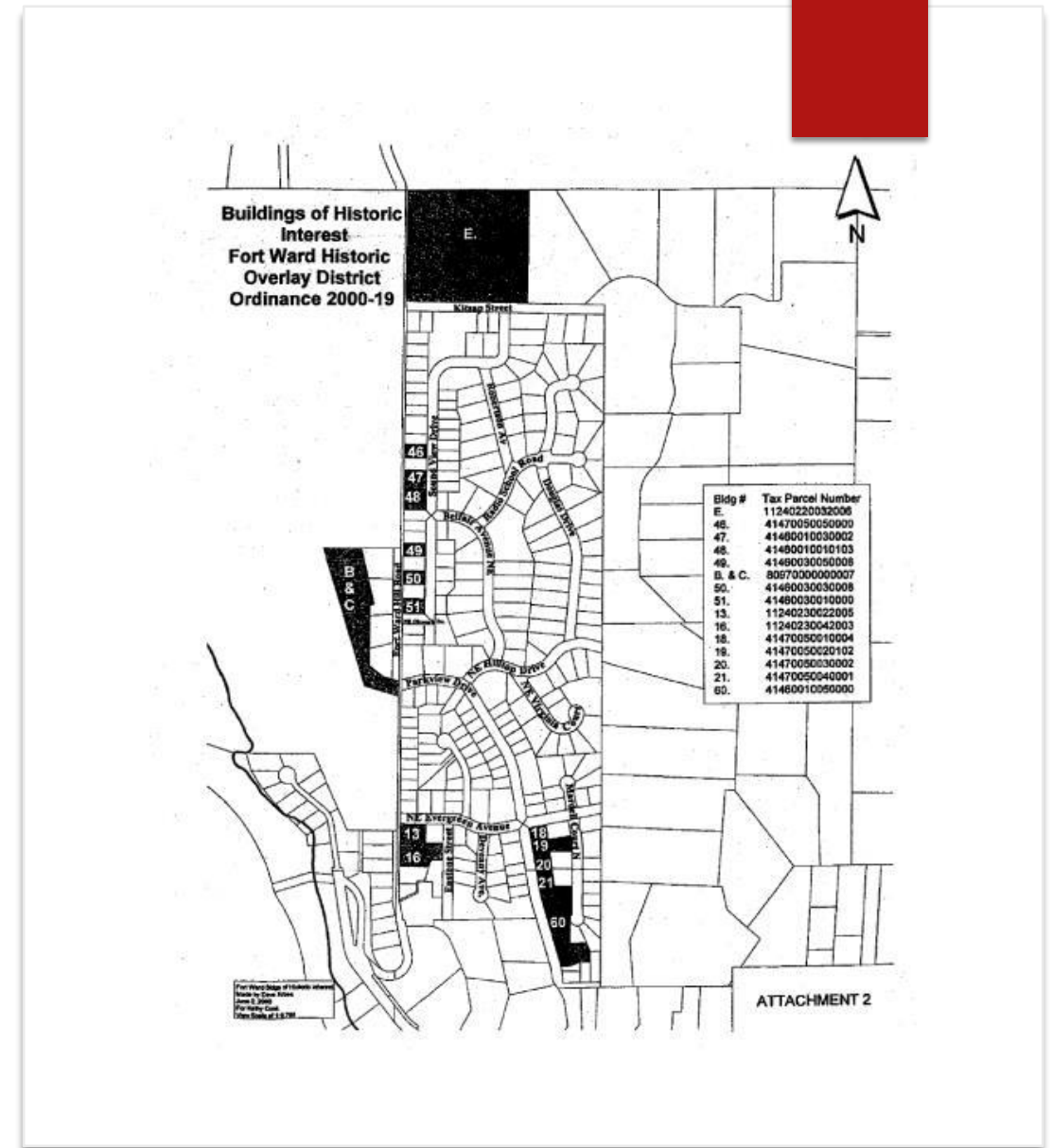
Fort Ward Overlay District Boundaries

BIMC 18.24.110, A.

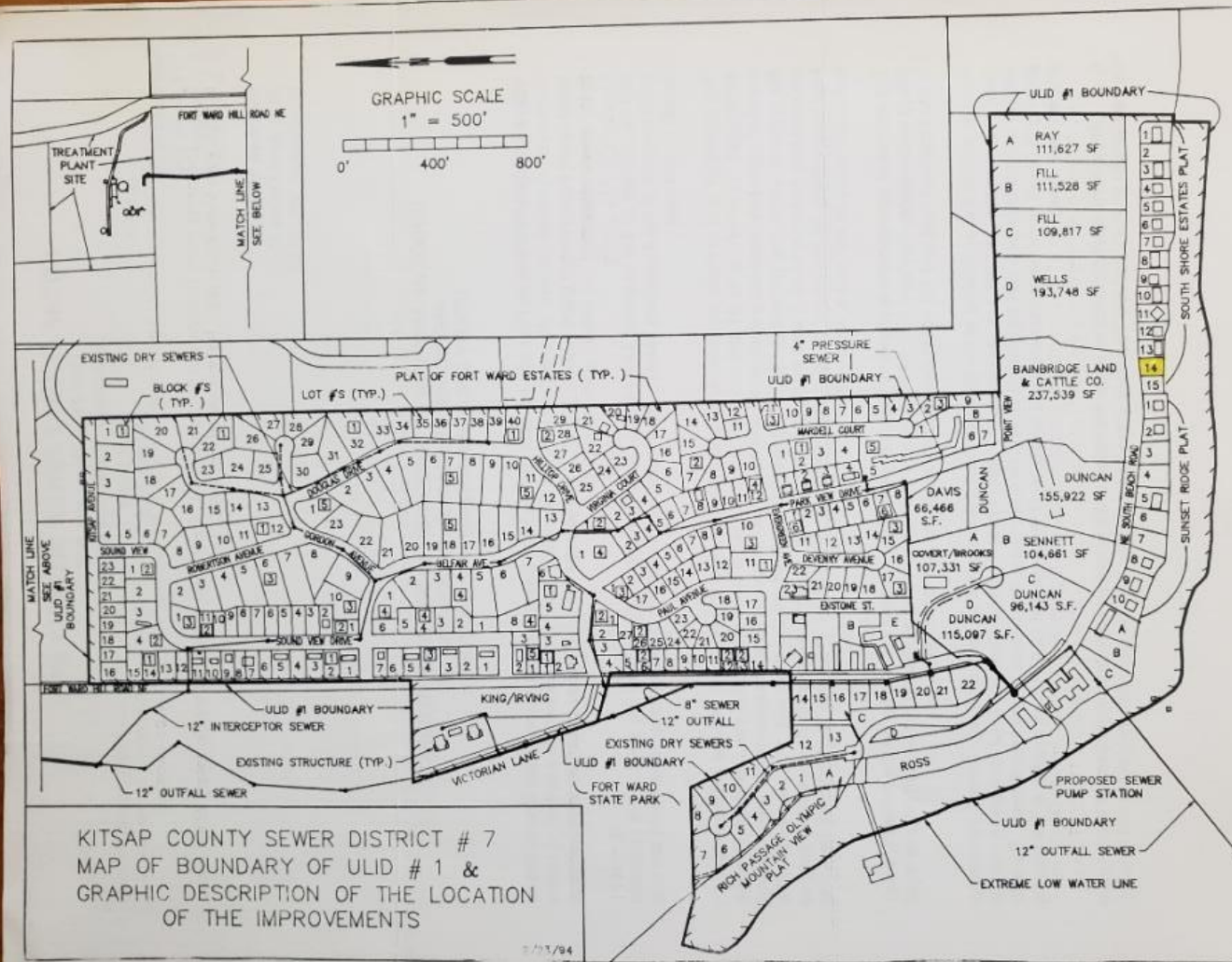


Historic Overlay

- ▶ Applies to Buildings of significance
- ▶ Parade Grounds not shown
 - ▶ Building lots identified in document
 - ▶ Parade Grounds saved through neighborhood effort and then placed in public ownership
 - ▶ Transferred to Park District with Transfer Agreement and Plat restrictions in Dec 2011
 - ▶ BIMC 18.24.110, C.



Original Plat proposal



Permitted uses per Agreement Regarding Transfer of Park Property

- ▶ Exhibit “B” 1. Potential uses
 - ▶ Passive park activities, such as hiking, bicycling, horseback riding, boating, kayaking, swimming, picnicking and nature viewing.
- ▶ Section 2 Conditions of Transfer:
 - ▶ 2.2 Use of Fort Ward Parade Grounds.
 - ▶ **As noted in the plat**, upon recommendation of the Fort Ward Neighborhood Association, a portion of the Fort Ward Parade Grounds may be developed as a children’s playground, consistent with historical use.

Transfer Agreement

Permitted uses

- ▶ Public Passive Park and/or Open Space Property
- ▶ Playground allowed on Parade Grounds
- ▶ Plat restrictions do not apply on adjacent parcels (site 3)

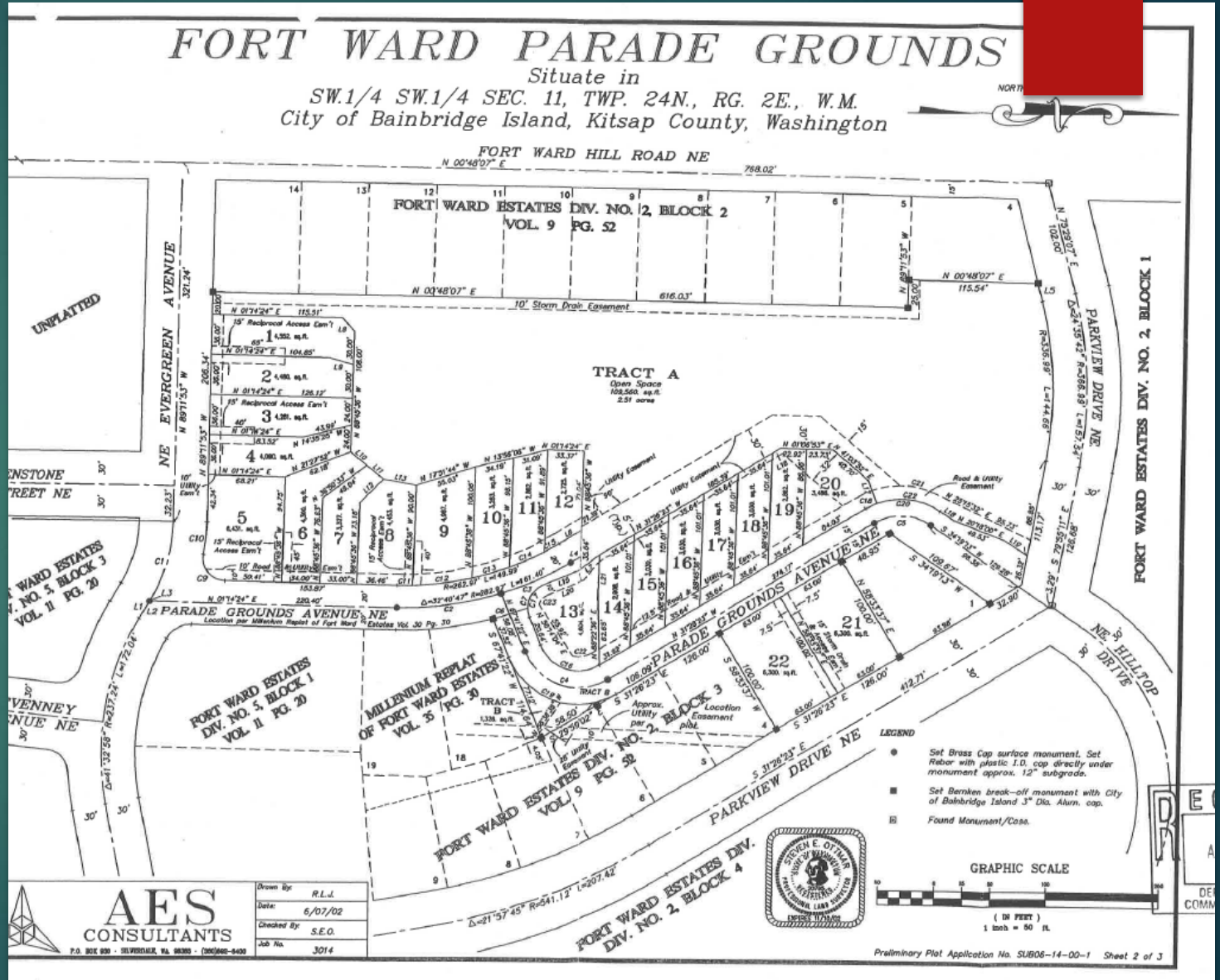
2. **Conditions of Transfer:** The City's transfer of the Properties is expressly conditioned and contingent upon the following terms:

2.1 **Use for Public Passive Park and/or Open Space Property.** The Properties shall be used exclusively for passive park and/or open space purposes, except for the additional uses allowed under Sections 2.2 and 2.3, below, for the Fort Ward Parade Grounds and the Adjacent Parcels. For purposes of this Agreement, the term "passive park" shall mean a public park without sports fields or sports facilities. Permitted passive park and open space uses shall include, but are not necessarily limited to, hiking, bicycling, horseback riding, swimming, boating and nature viewing. Open space uses shall include those set forth in **Exhibit "B,"** attached hereto and incorporated by this reference. The District shall have the sole discretion of determining which permitted uses shall be allowed on which portions of the Properties and establishing appropriate rules and regulations governing such use.

2.2 **Use of Fort Ward Parade Grounds.** As noted in the plat, upon recommendation of the Fort Ward Neighborhood Association, a portion of the Fort Ward Parade Grounds may be developed as a children's playground, consistent with historical use. Organized sporting events, the creation of formal sports fields, and the use of motorized vehicles (except related to maintenance activities) shall be prohibited.

2.3 **Use of Adjacent Parcels.** The Adjacent Parcels are not subject to the plat restriction and may be used for either active or passive park purposes.

- ▶ Included Open Space Tract A
- ▶ Note 10. Open Space – A shall be limited to informal recreation.....
- ▶ See next slide



Fort Ward Parade Grounds Plat Notes

- ▶ Note 10.
 - ▶ Open space – A shall be limited to informal recreation such as bird watching, walking, photograph, picnicking, and kite-flying. Upon recommendation of the Fort Ward Neighborhood Association, a portion of the open space may be developed as a children's playground, consistent with historical use.



Questions?