



# STRAWBERRY HILL

## CONCEPTUAL PLAN & UPDATES

MARCH 2, 2023



Bainbridge Island  
Metro Park & Recreation District



# AGENDA

- Introduction to all SH Agenda Topics
- Dog Park – Motion to Approve
- Artificial Turf – Update
- Strawberry Hill Conceptual Plan – Update & Board Input
- Next Steps

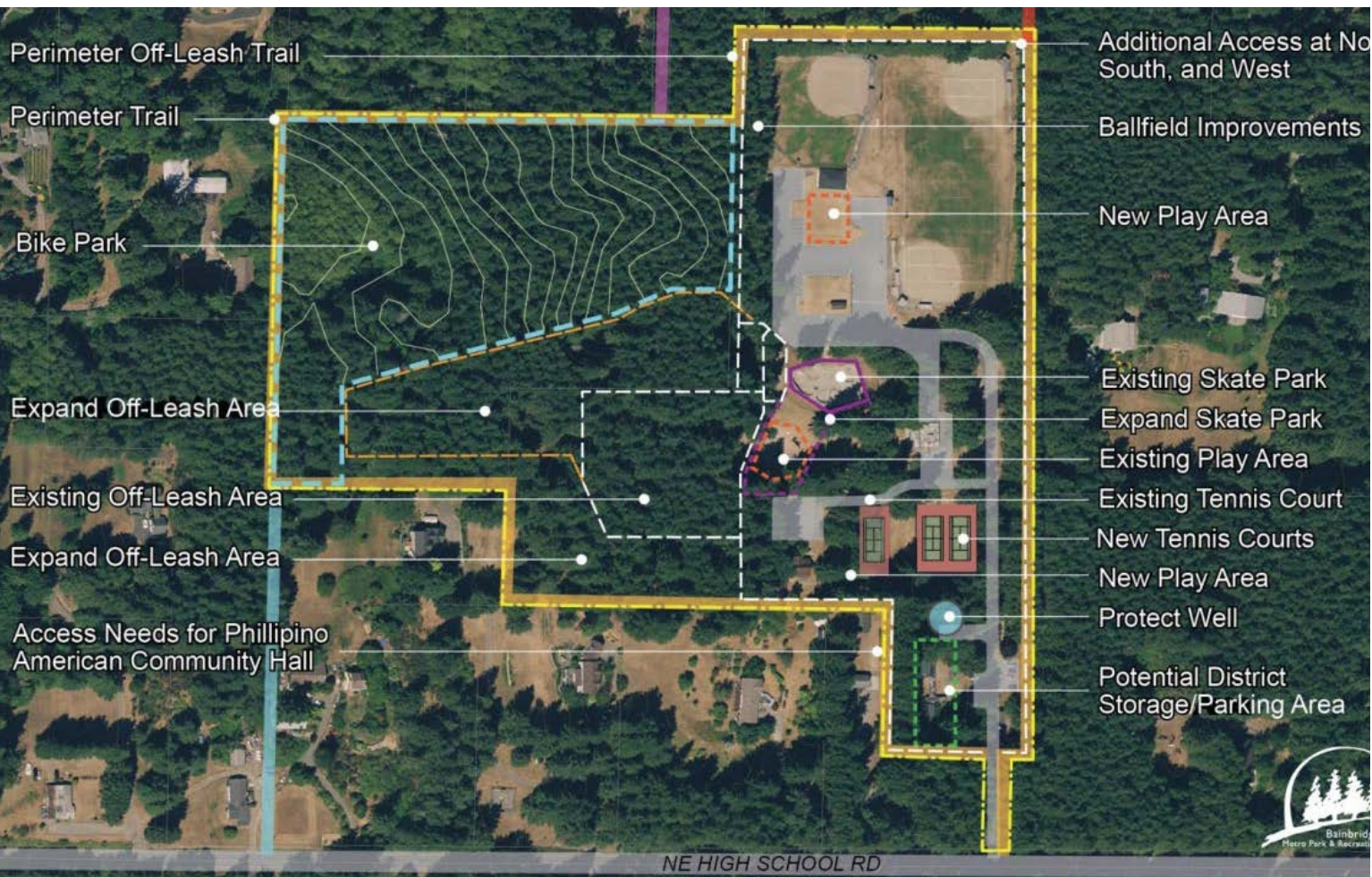




# PARK LAND

- Original Parcel
- West Donor Parcel
- McKeon Easement
- Comcast Property

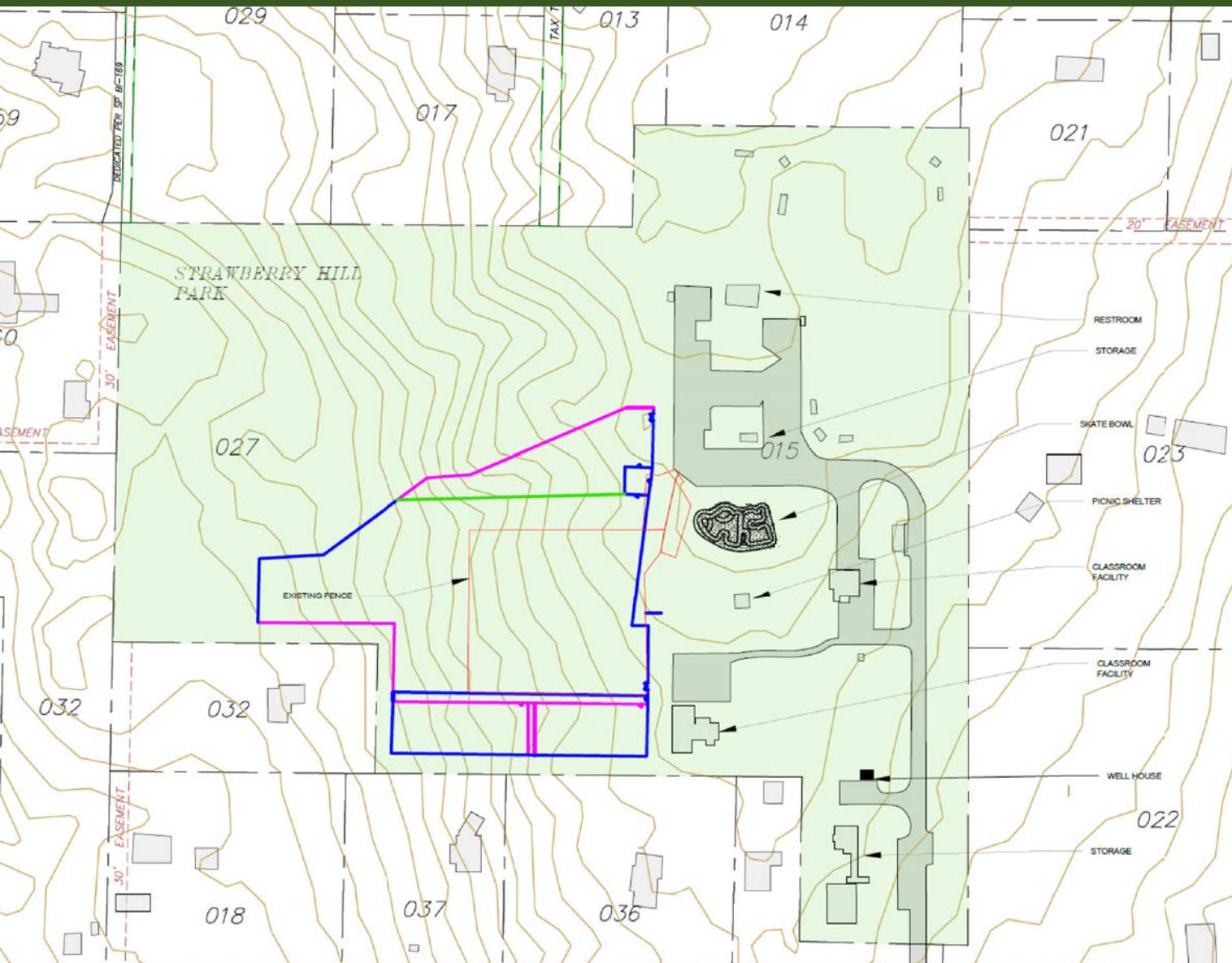




# CONSOLIDATED INPUT

- Ideas for concept discussed at board & neighborhood meetings



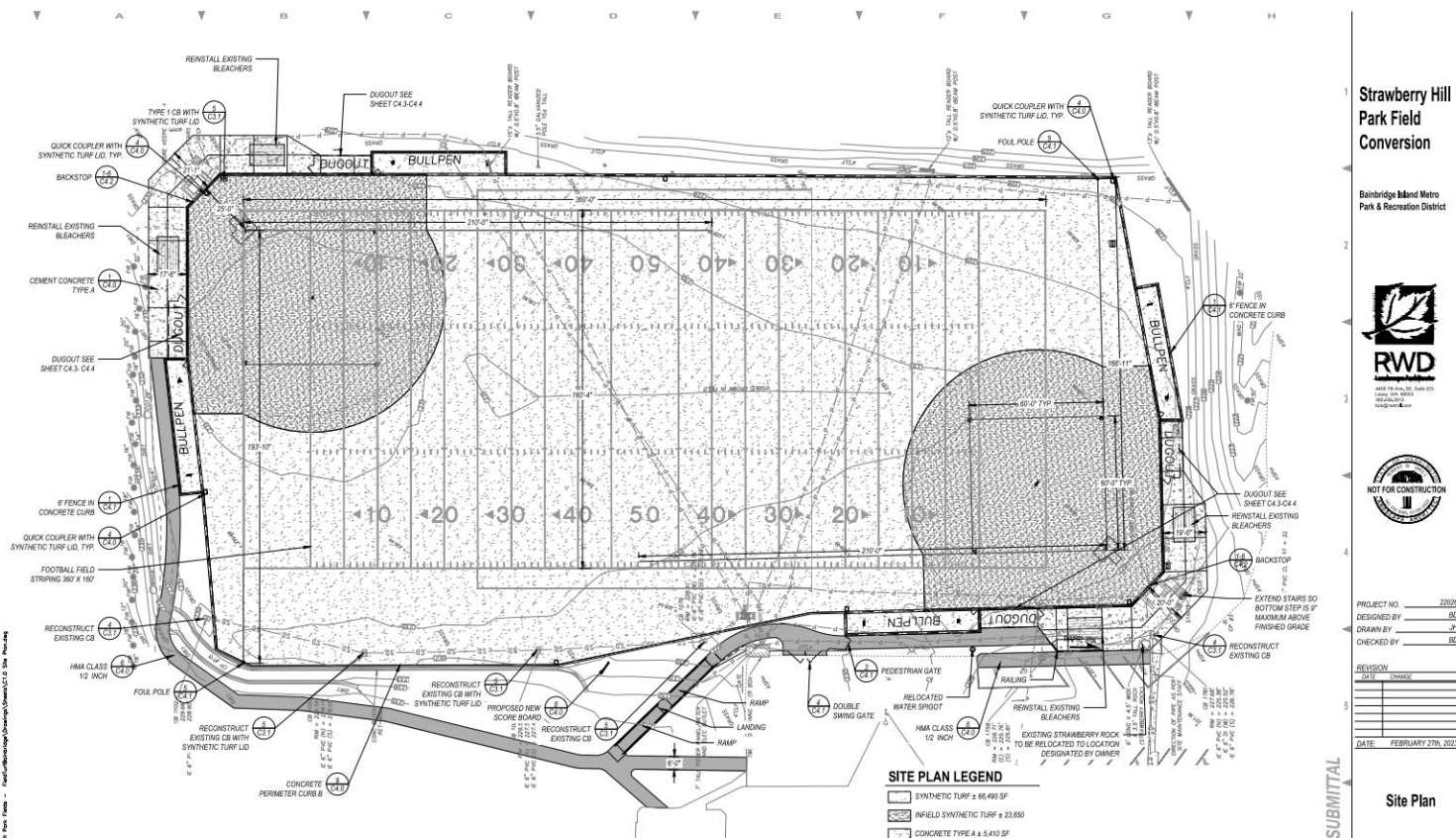


# DOG PARK

- Developed with input from Dog Committee & Donor
- Enlarge small dog park
- Enlarge large dog park
- Create training bays
- Fence height
- Slatting



**MOTION TO APPROVE**  
the dog park fencing plan to  
initiate the bid process & secure  
a contractor.

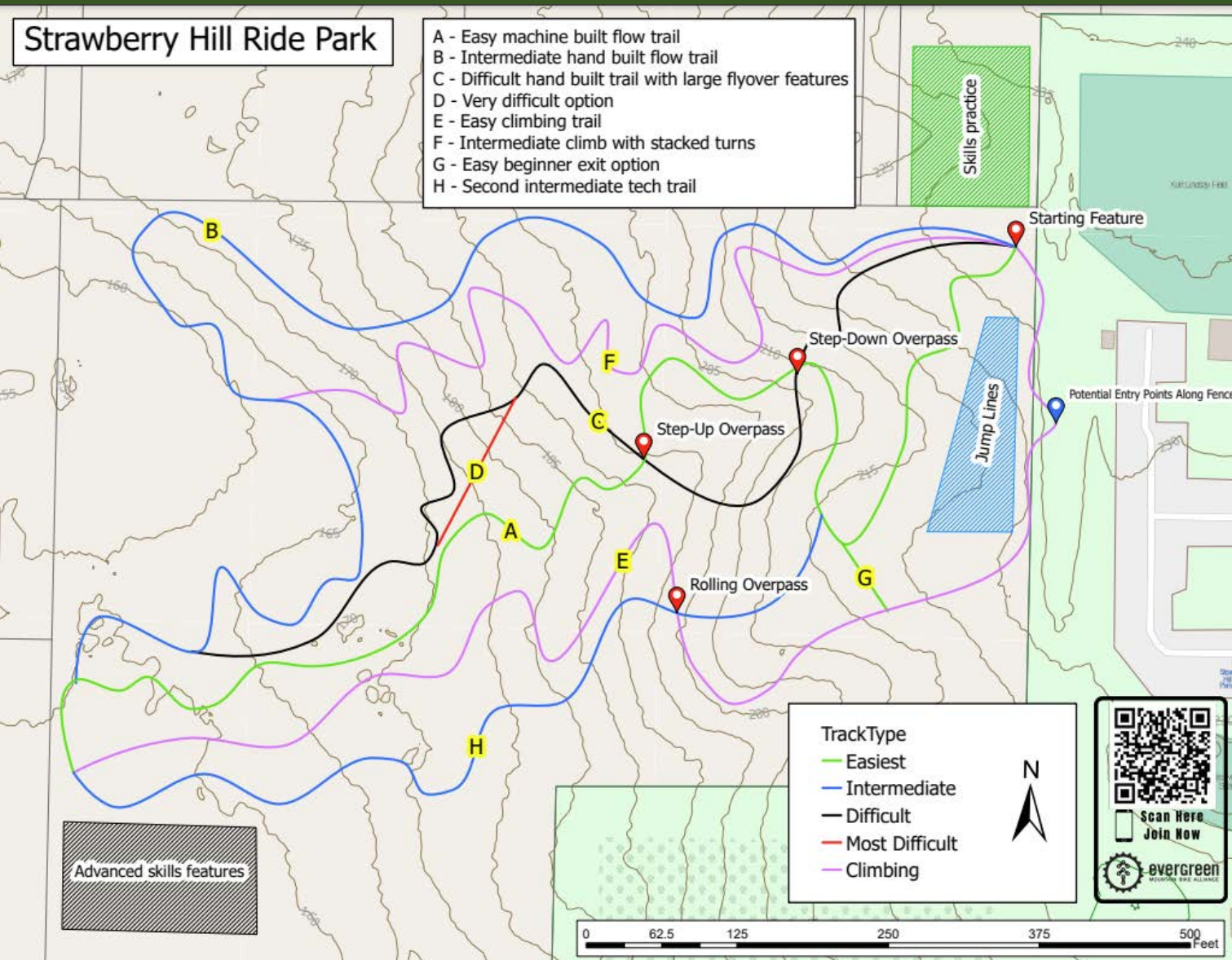


# ARTIFICIAL TURF

- Pre-ap Meeting with COBI
- Footprint Enlarged to Accommodate ADA
- 60% Design
- Next Steps: Cost Estimate, Permitting, & User Group Meetings







# BIKE PARK

- Developed with input from Mountain Bike Park Committee
- Evergreen Mountain Bike Alliance







Strawberry Hill Skatepark Expansion Concept  
C081622 | August 16th, 2022

## Strawberry Hill Skatepark Expansion Concept

Bainbridge Island, WA

[grindline.com](http://grindline.com) | [inform@grindline.co](mailto:inform@grindline.co)

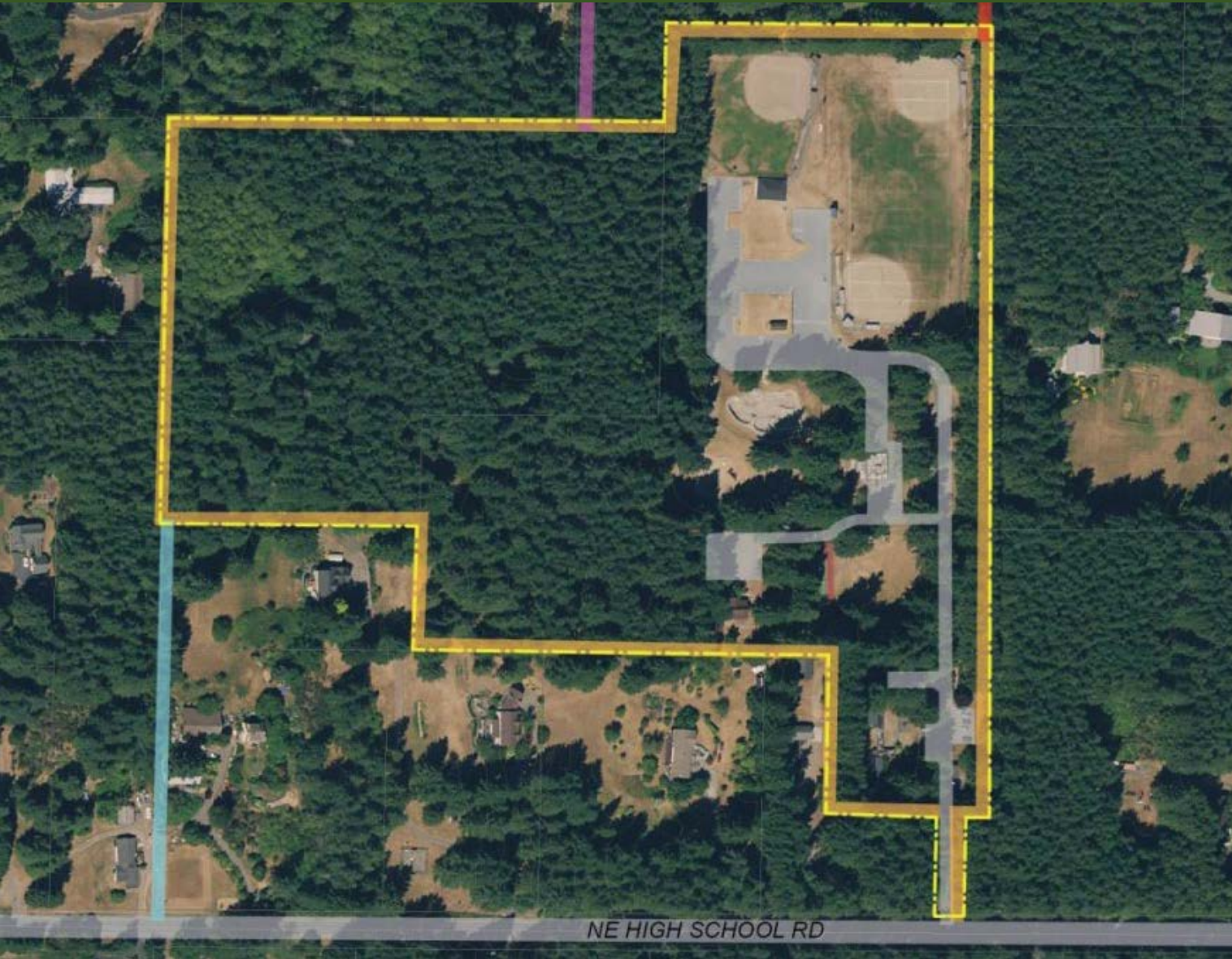
# SKATE PARK

- Developed with input from Skate Park Committee
- Grindline Skateparks, Inc.



Bainbridge Island  
Metro Park & Recreation District



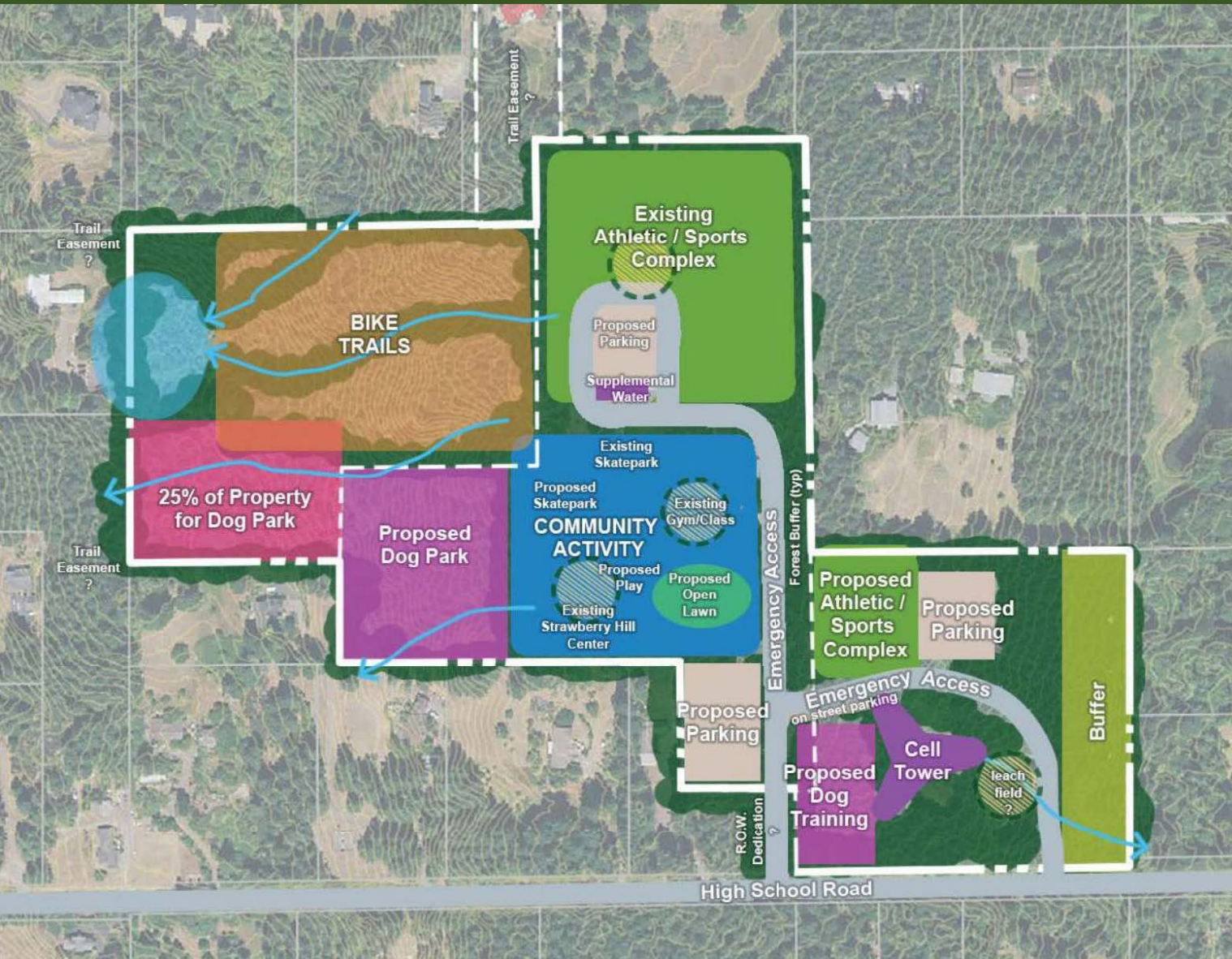


# TRAIL CONNECTIONS

- Connection to Walden Easement – Red
- Cherry Orchard Tax Title strip – Purple
- High School Road Easement – Blue







# PARK IMPROVEMENT CONCEPTS

- Improve sports fields
- Central community park space
- Racket courts
- Safety – Reestablish circulation
- Adequate parking



ASAKURA  
ROBINSON



Bainbridge Island  
Metro Park & Recreation District





# SPORTS FIELDS

- Reorient upper field for improved access for spectators
- Potential indoor field space
- Synthetic field & accessible access
- Improved concession & restroom area
- User group storage
- Existing infrastructure



ASAKURA  
ROBINSON



Bainbridge Island  
Metro Park & Recreation District



# COMMUNITY PARK SPACE

- Relocate playground
- Picnic shelters
- Maintain open space
- Preserve trees



ASAKURA  
ROBINSON



Bainbridge Island  
Metro Park & Recreation District





# PUBLIC SAFETY





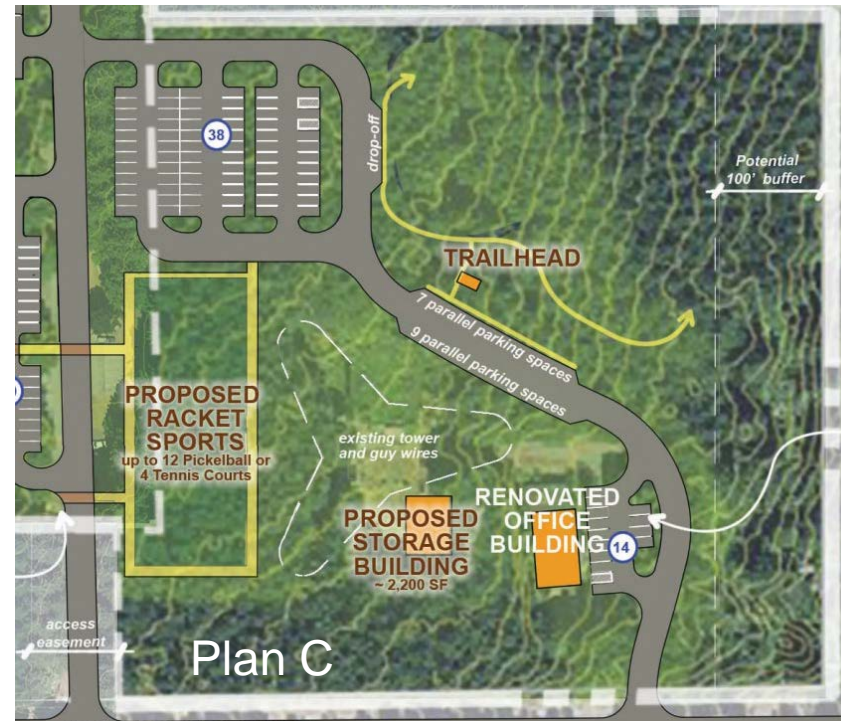
# PARKING

Current Parking:  
135

Preliminary Data:  
200+



# RACKET COURTS



ASAKURA  
ROBINSON



Bainbridge Island  
Metro Park & Recreation District





Plan A







Plan C





## NEXT STEPS

- Continue to work on design with Asakura Robinson
- Guidance on racket courts & community park space
- Additional public comment period
- Additional comments from Board
- Tentative final presentation April 6, 2023



# Questions?