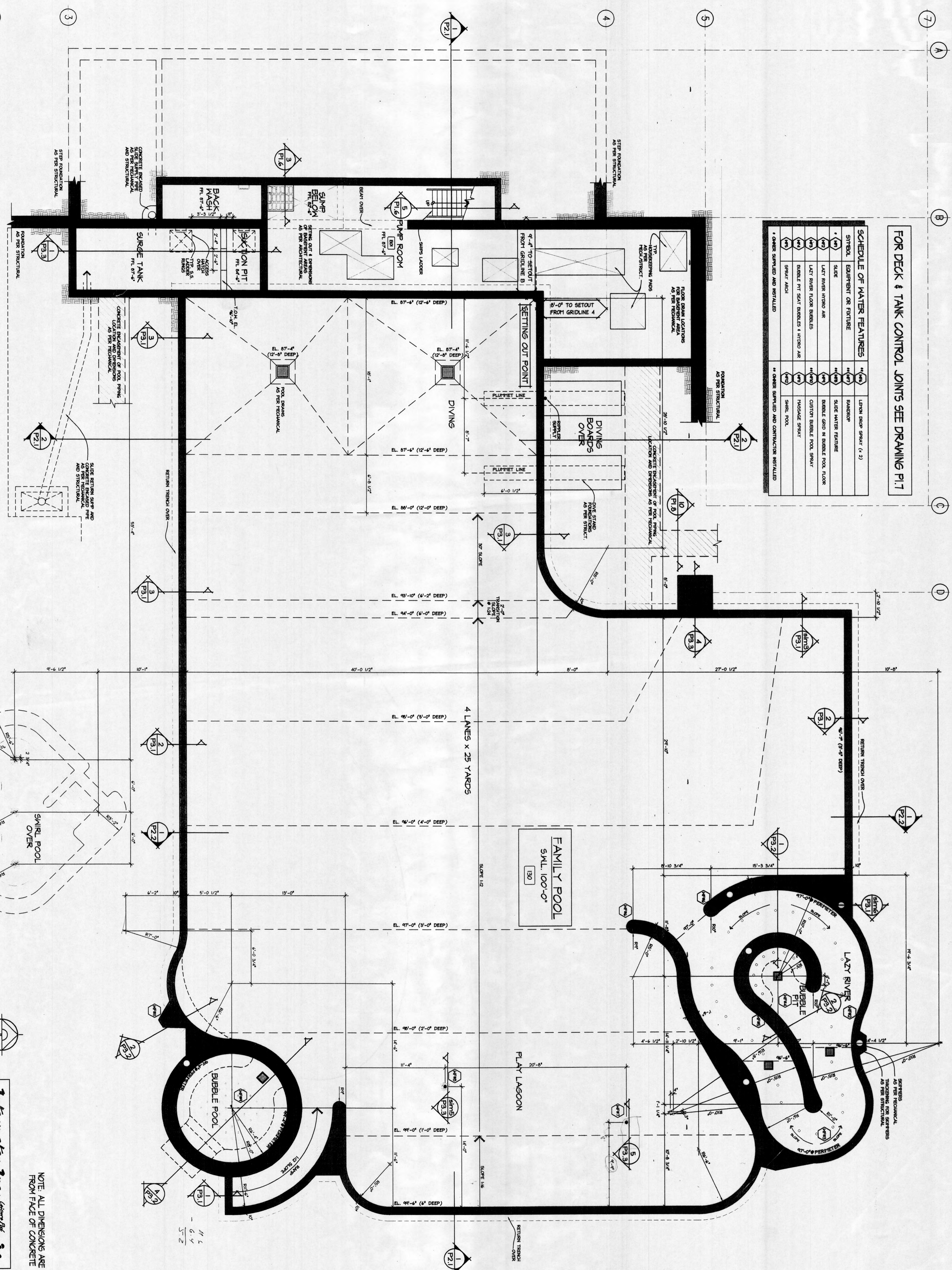


FOR DECK & TANK CONTROL JOINTS SEE DRAWING P1.1

SCHEDULE OF WATER FEATURES		# OWNERS SUPPLIED AND CONTRACTOR INSTALLED	
1	SLIDE	1	LAZY RIVER SPAW (1 & 2)
2	EQUIPMENT OR FIXTURE	1	BLINDING
3	SLIDE	1	SLIDE WATER FEATURE
4	LAZY RIVER HYDRO AIR	1	BUBBLE GRID IN BUBBLE POOL FLOOR
5	LAZY RIVER FLOOR BUBBLES	1	CUSTOM BUBBLE POOL SPAW
6	BUBBLE PIT SPAY BUBBLES & HYDRO AIR	1	HIGHDUE SPAW
7	SPRAY FOUL	1	SHRUB POOL



NOTE: ALL DIMENSIONS ARE FROM FACE OF CONCRETE

**Interwater Inc.**  
 800 Clinton Avenue, Victoria, British Columbia V8P 2G2  
 Telephone: (250) 471-2555 Fax: (250) 471-2444

SHEET <b>P1.2</b> B	9253	SHEET TITLE <b>FAMILY POOL FOUNDATION AND LAYOUT PLAN</b>	<b>ADDITION TO RAY WILLIAMSON MEMORIAL POOL</b>		ARCHITECT	ENGINEER	DRAWN:	A	ISSUE FOR PERMIT	3/2/00
			BAINBRIDGE ISLAND, WASHINGTON				M N	B	ISSUE FOR BID	8/0/00
			<b>THE ORB ORGANIZATION, INC.</b>		STATE OF WASHINGTON		CHECKED:	VDA		
			607 SW Grady Way, Suite 210		Renton, Washington 98055-2977		APPROVED:	VDA		
			Phone: (425) 226-3522 Fax: (425) 226-9115				DATE:	3/1/00		